

# 52 TOWNHOUSES, GARAGES AND COMMUNAL AREAS

## TOWNHOUSE KA-09

3 BEDROOMS  
Block 2

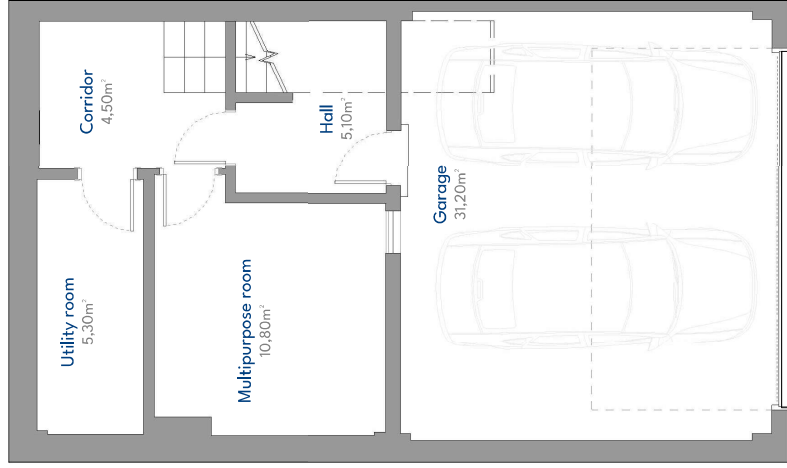
### BUILT AREA

Living Area	220,41 m <sup>2</sup>
Terrace Area	19,58 m <sup>2</sup>
Garden + Uncovered terrace	45,70 m <sup>2</sup>
<b>TOTAL BUILT AREA</b>	<b>285,69 m<sup>2</sup></b>

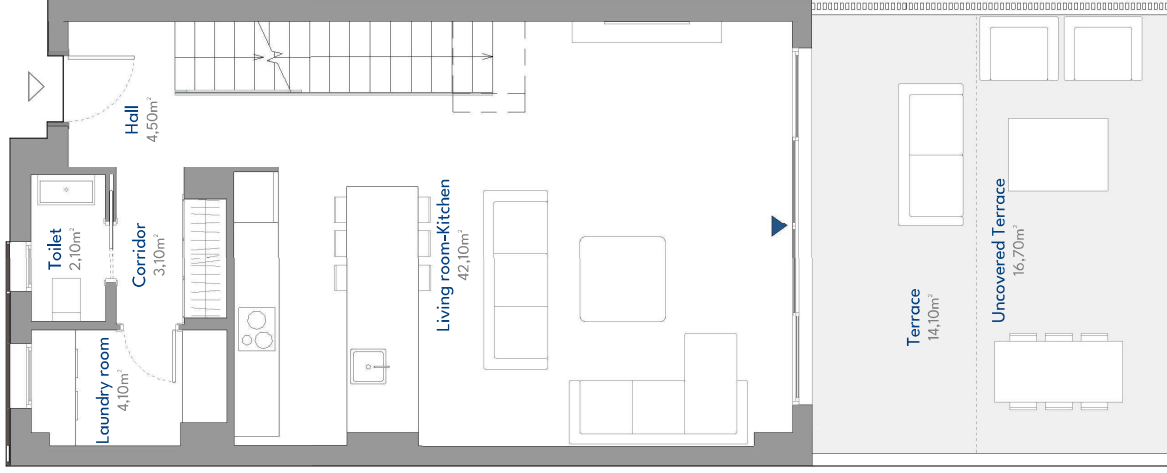
### ACCORDING TO RD 218/2005

Useful Area	137,58 m <sup>2</sup>
Built Area	182,01 m <sup>2</sup>

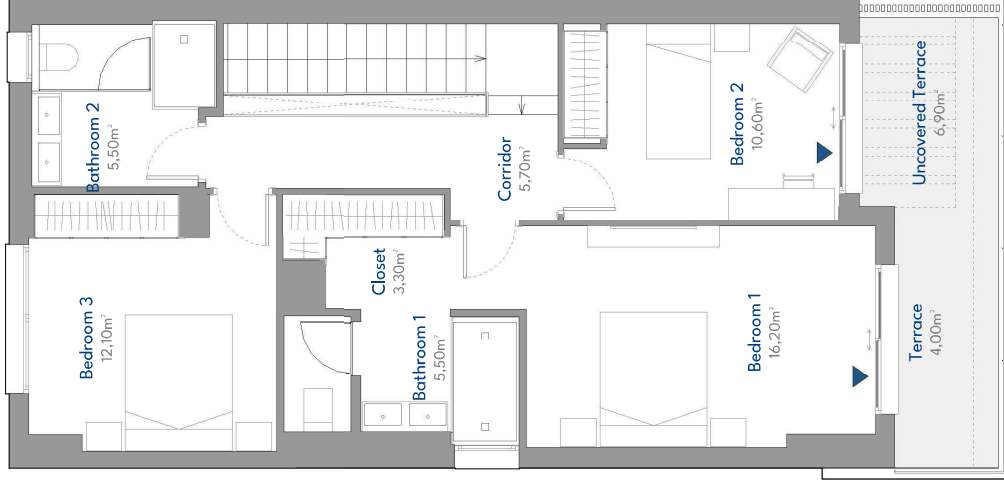
### LOCATION PLAN



Basement Floor



Ground Floor



First Floor



# 52 TOWNHOUSES, GARAGES AND COMMUNAL AREAS

## TOWNHOUSE KA-09

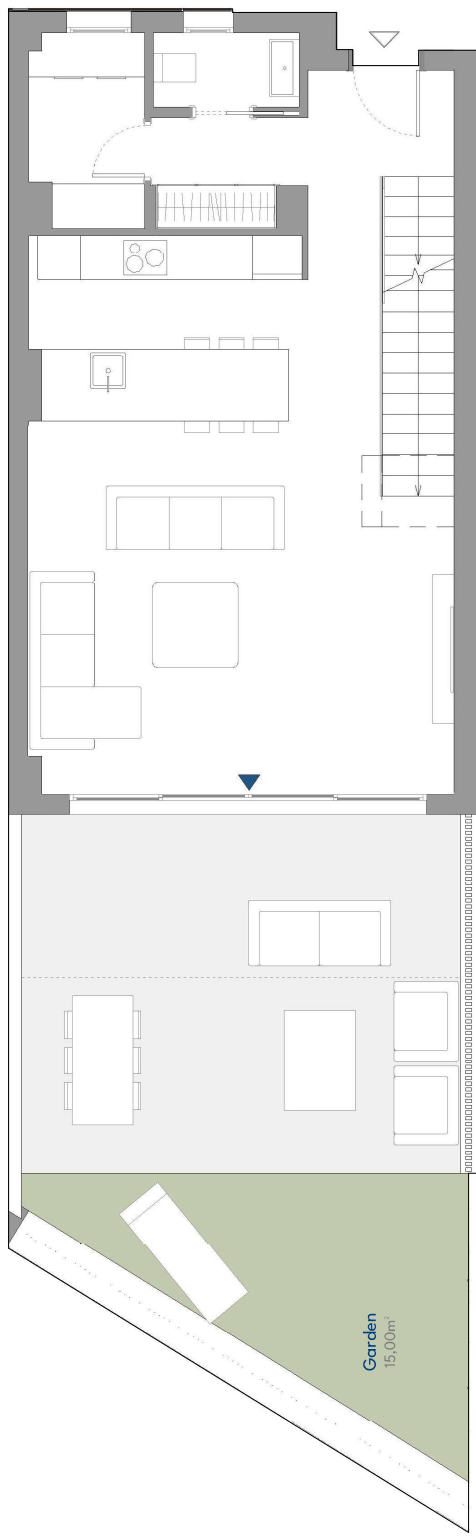
3 BEDROOMS  
Block 2

### BUILT AREA

Living Area	220,41 m <sup>2</sup>
Terrace Area	19,58 m <sup>2</sup>
Garden + Uncovered terrace	45,70 m <sup>2</sup>
<b>TOTAL BUILT AREA</b>	<b>285,69 m<sup>2</sup></b>

### ACCORDING TO RD 218/2005

Useful Area	137,58 m <sup>2</sup>
Built Area	182,01 m <sup>2</sup>



### LOCATION PLAN

