

# 52 TOWNHOUSES, GARAGES AND COMMUNAL AREAS

## TOWNHOUSE KA-11

3 BEDROOMS  
Block 2

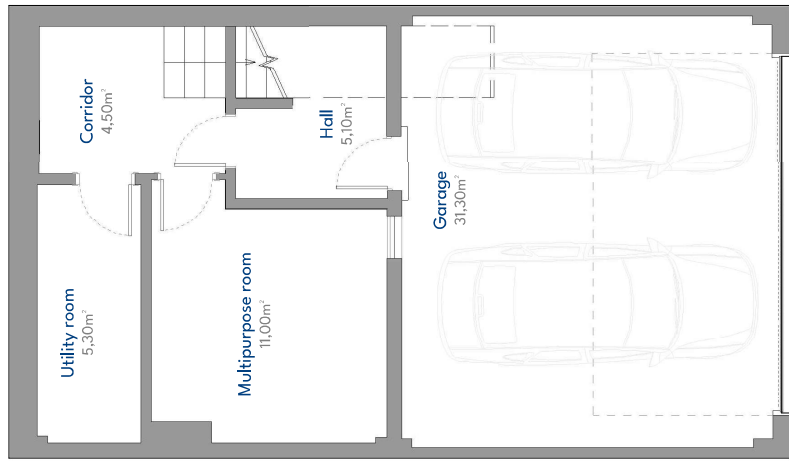
### BUILT AREA

|                            |                             |
|----------------------------|-----------------------------|
| Living Area                | 210,75 m <sup>2</sup>       |
| Terrace Area               | 18,18 m <sup>2</sup>        |
| Garden + Uncovered terrace | 94,71 m <sup>2</sup>        |
| <b>TOTAL BUILT AREA</b>    | <b>323,64 m<sup>2</sup></b> |

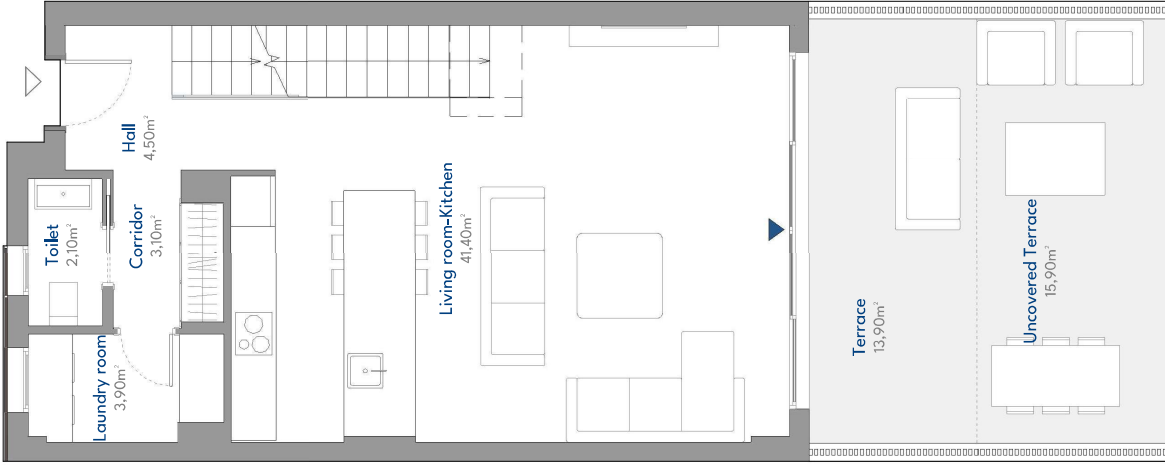
### ACCORDING TO RD 218 /2005

|             |                       |
|-------------|-----------------------|
| Useful Area | 133,68 m <sup>2</sup> |
| Built Area  | 176,13 m <sup>2</sup> |

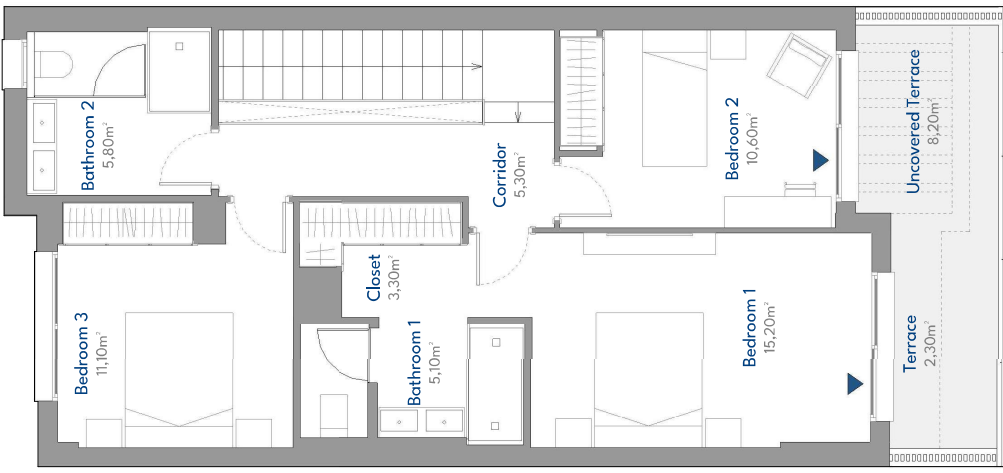
### LOCATION PLAN



Basement Floor



Ground Floor



First Floor



# 52 TOWNHOUSES, GARAGES AND COMMUNAL AREAS

## TOWNHOUSE KA-11

3 BEDROOMS  
Block 2

### BUILT AREA

|                            |                             |
|----------------------------|-----------------------------|
| Living Area                | 210,75 m <sup>2</sup>       |
| Terrace Area               | 18,18 m <sup>2</sup>        |
| Garden + Uncovered terrace | 94,71 m <sup>2</sup>        |
| <b>TOTAL BUILT AREA</b>    | <b>323,64 m<sup>2</sup></b> |

### ACCORDING TO RD 218/2005

|             |                       |
|-------------|-----------------------|
| Useful Area | 133,68 m <sup>2</sup> |
| Built Area  | 176,13 m <sup>2</sup> |

### LOCATION PLAN

