

# 52 TOWNHOUSES, GARAGES AND COMMUNAL AREAS

## TOWNHOUSE KA-18

3 BEDROOMS  
Block 3

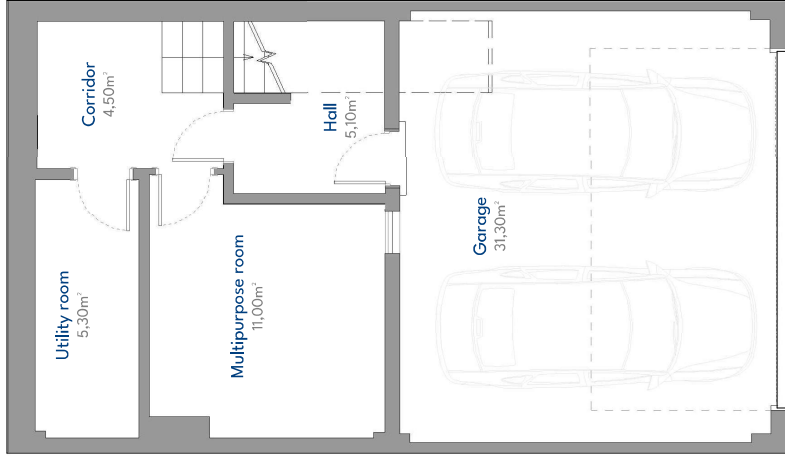
### BUILT AREA

Living Area	210,75 m <sup>2</sup>
Terrace Area	18,18 m <sup>2</sup>
Garden + Uncovered terrace	52,98 m <sup>2</sup>
<b>TOTAL BUILT AREA</b>	<b>281,91 m<sup>2</sup></b>

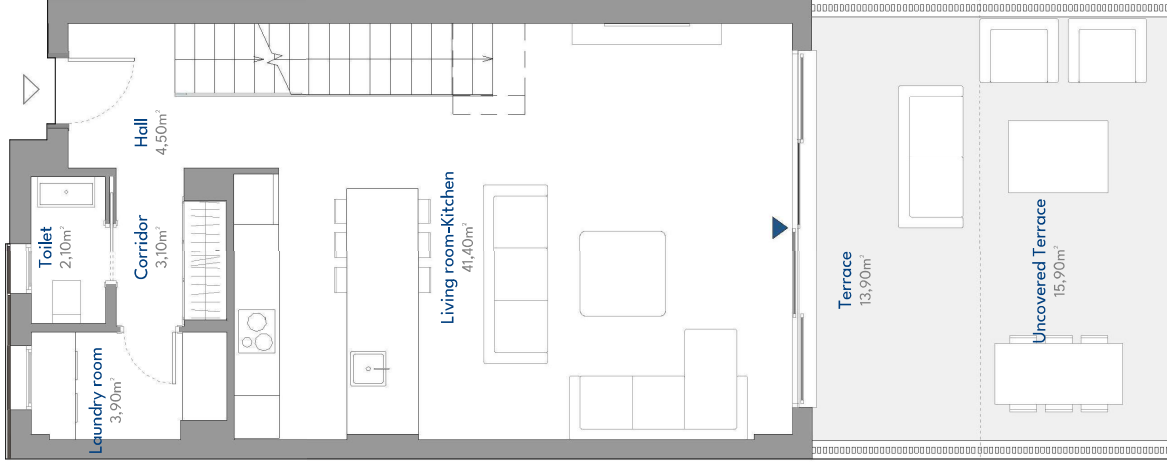
### ACCORDING TO RD 218 /2005

Useful Area	133,68 m <sup>2</sup>
Built Area	172,58 m <sup>2</sup>

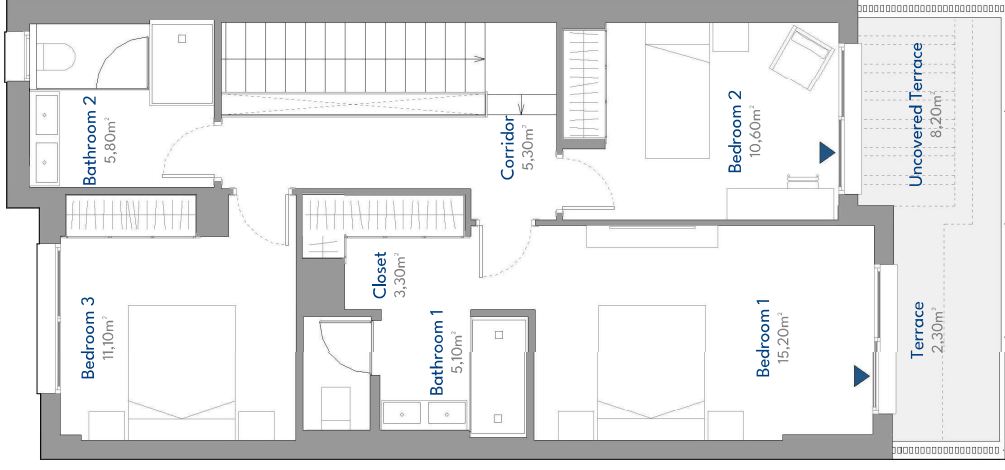
### LOCATION PLAN



Basement Floor



Ground Floor



First Floor



# 52 TOWNHOUSES, GARAGES AND COMMUNAL AREAS

## TOWNHOUSE KA-18

3 BEDROOMS  
Block 3

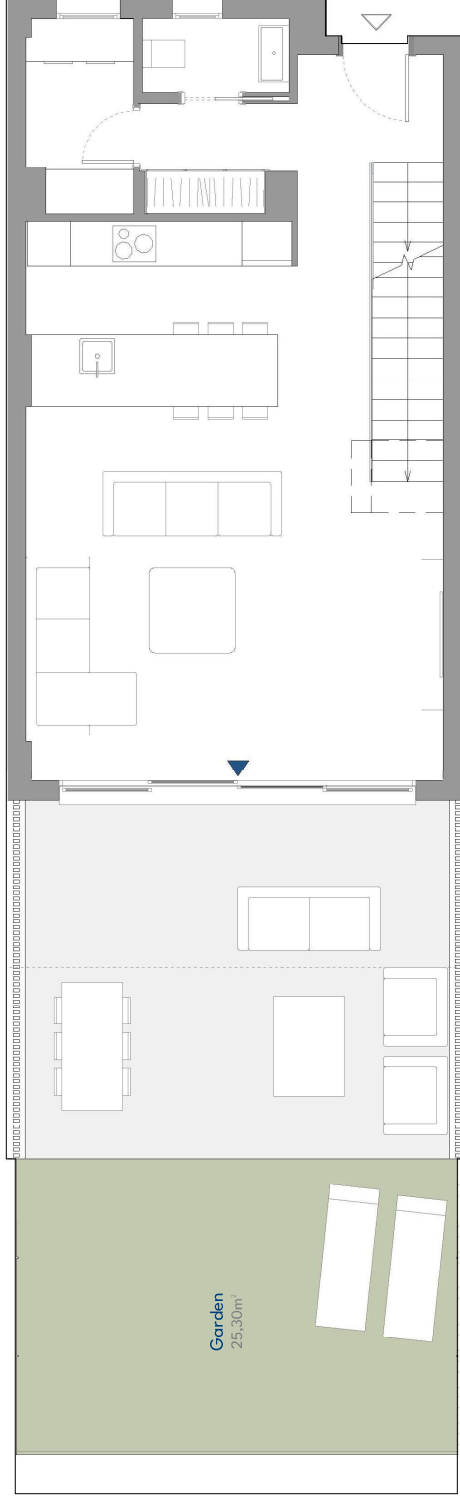
### BUILT AREA

Living Area	210,75 m <sup>2</sup>
Terrace Area	18,18 m <sup>2</sup>
Garden + Uncovered terrace	52,98 m <sup>2</sup>
<b>TOTAL BUILT AREA</b>	<b>281,91m<sup>2</sup></b>

### ACCORDING TO RD 218/2005

Useful Area	133,68 m <sup>2</sup>
Built Area	172,58 m <sup>2</sup>

### LOCATION PLAN



Garden  
25,30m<sup>2</sup>

