

# 52 TOWNHOUSES, GARAGES AND COMMUNAL AREAS

## TOWNHOUSE KA-24

3 BEDROOMS  
Block 4

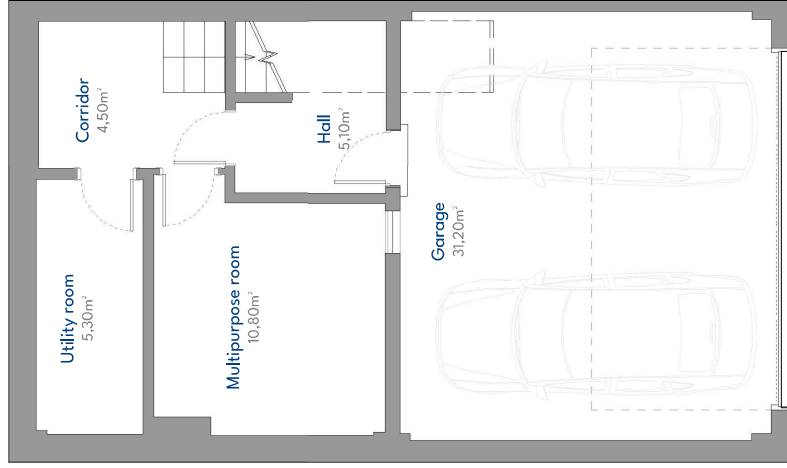
### BUILT AREA

Living Area	220,41 m <sup>2</sup>
Terrace Area	19,98 m <sup>2</sup>
Garden + Uncovered terrace	42,87 m <sup>2</sup>
<b>TOTAL BUILT AREA</b>	<b>283,26 m<sup>2</sup></b>

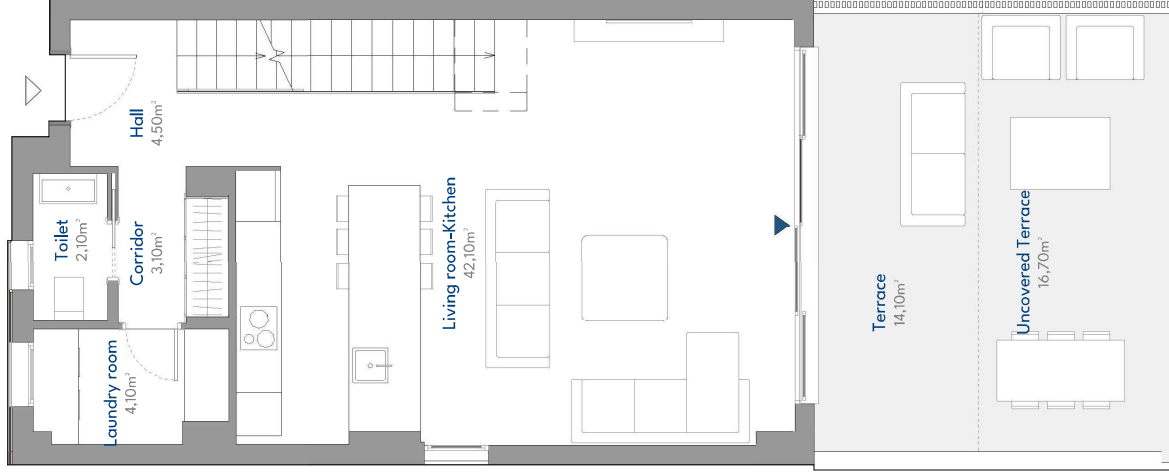
### ACCORDING TO RD 218/2005

Useful Area	137,58 m <sup>2</sup>
Built Area	180,58 m <sup>2</sup>

### LOCATION PLAN



Basement Floor



Ground Floor



First Floor



# 52 TOWNHOUSES, GARAGES AND COMMUNAL AREAS

f

## TOWNHOUSE KA-24

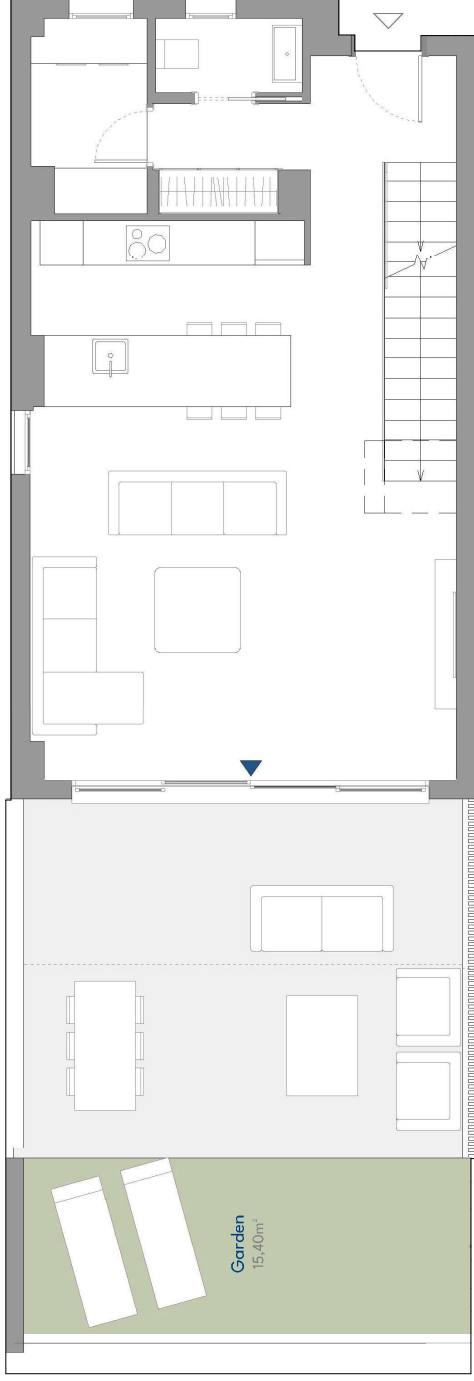
3 BEDROOMS  
Block 4

### BUILT AREA

Living Area	220,41 m <sup>2</sup>
Terrace Area	19,98 m <sup>2</sup>
Garden + Uncovered terrace	42,87 m <sup>2</sup>
<b>TOTAL BUILT AREA</b>	<b>283,26 m<sup>2</sup></b>

### ACCORDING TO RD 218/2005

Useful Area	137,58 m <sup>2</sup>
Built Area	180,58 m <sup>2</sup>



### LOCATION PLAN

