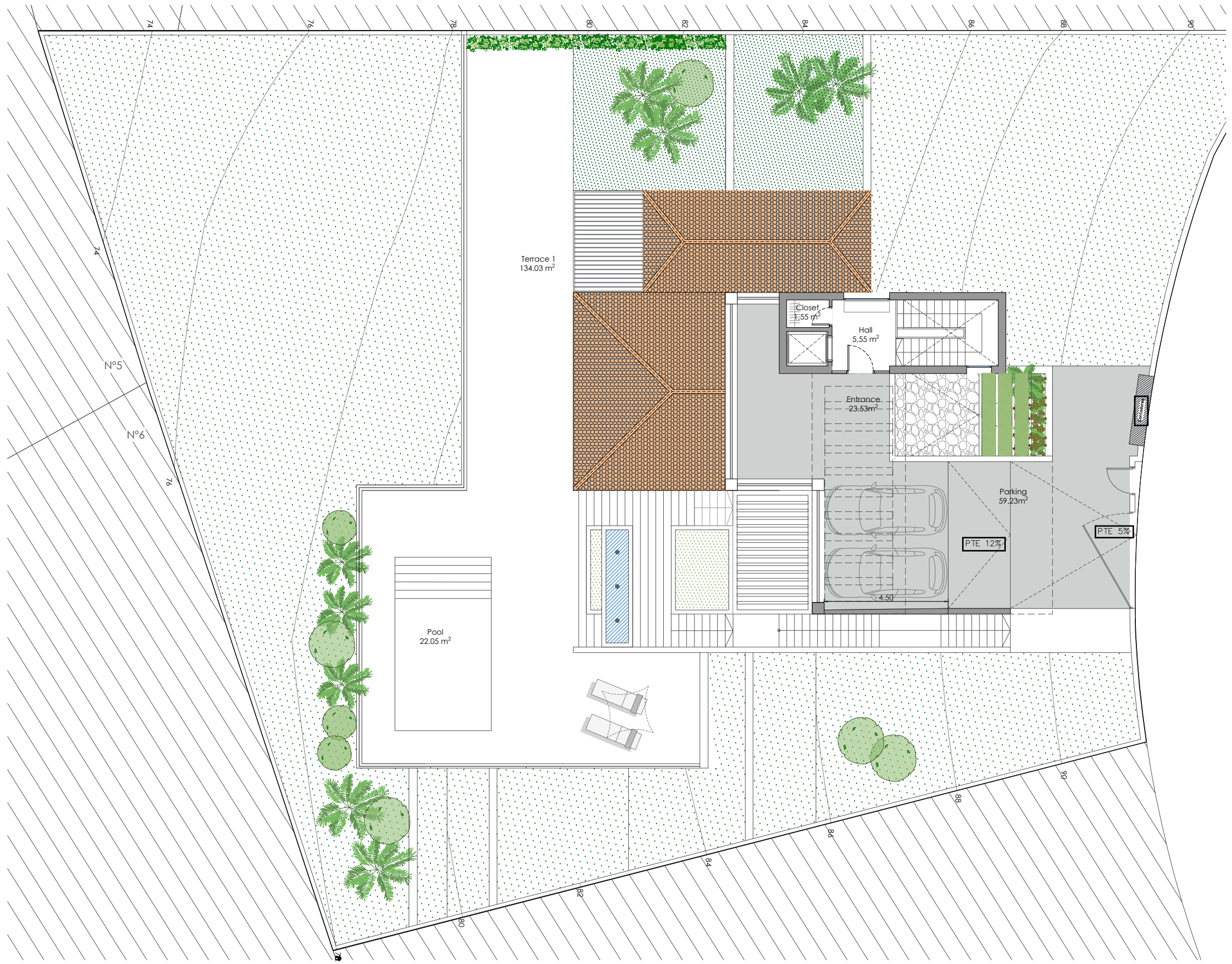
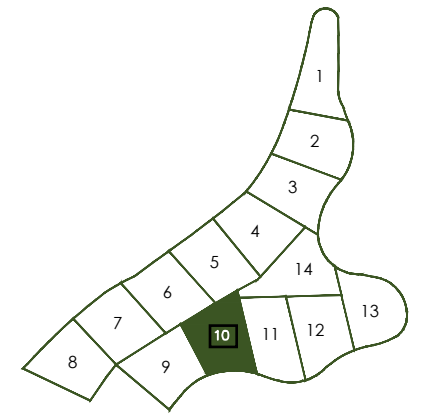
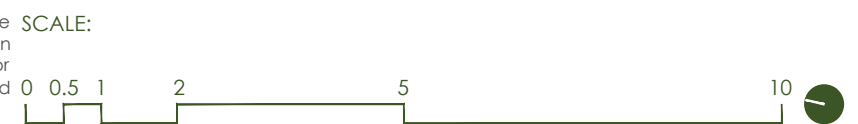


# 10 TYPE 3 Emplacement

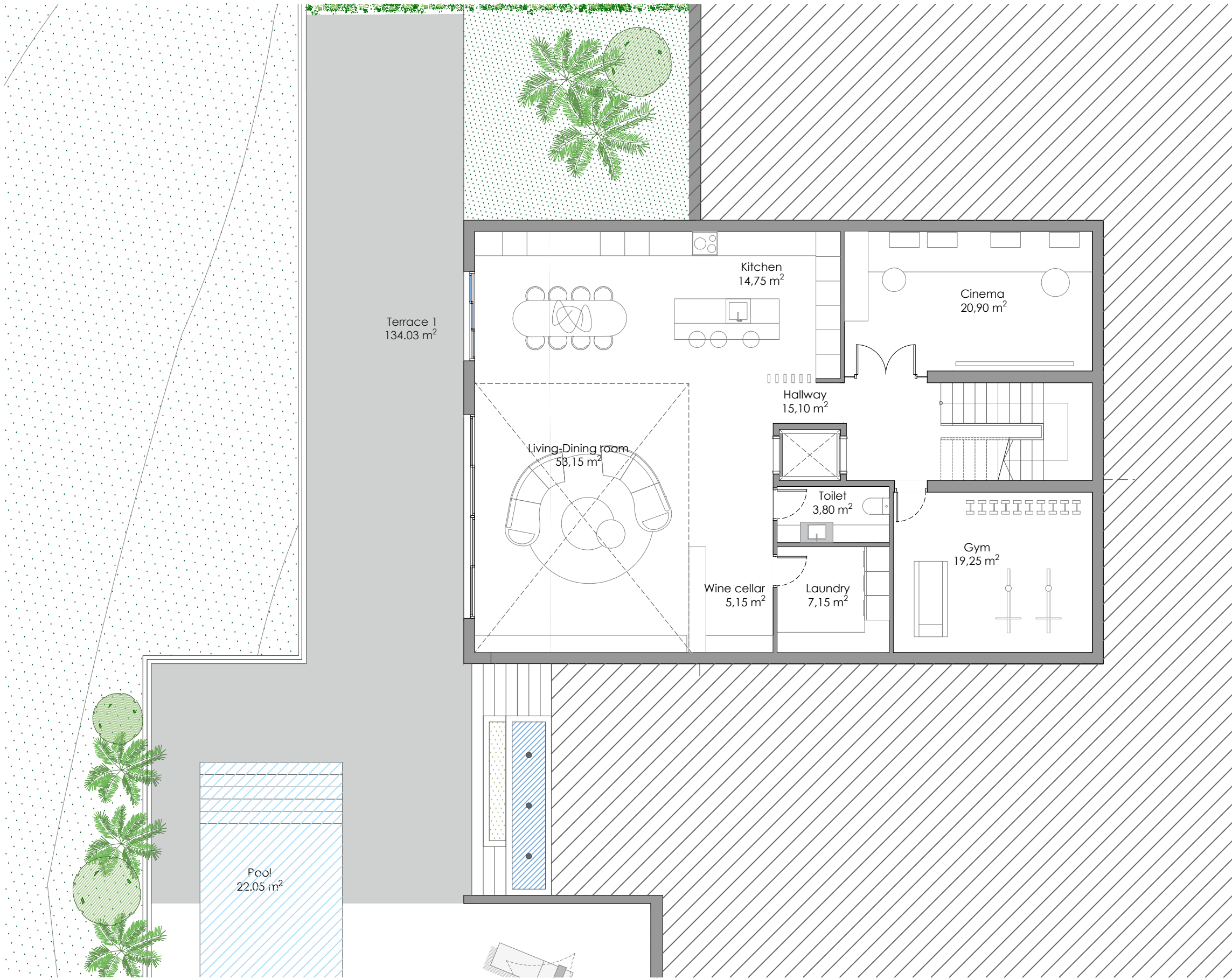


Bedrooms	4
Indoor Const. Area	325,79m <sup>2</sup>
Terrace Const. Area	270,04m <sup>2</sup>
<b>Total Usable Area</b> <small>(According to Dec. 218/2015)</small>	<b>358,37m<sup>2</sup></b>

This floorplan is not definitive; therefore the developers reserves the right to include any necessary modifications given by the technical and/or legal requirements or as ordered by any public administrations or body, provided such changes remain consistent with the final Construction Project. Accessory elements (for example, furniture, including kitchen units) are for illustrative purposes only. Door swins and the layout of sanitary fixtures are not binding. The areas shown are approximate and may be subject to change for technical and/or legal reasons during the execution of the works.

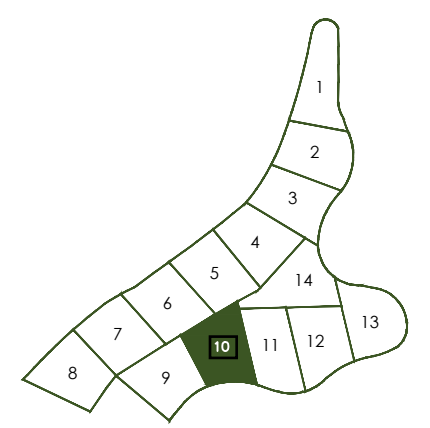
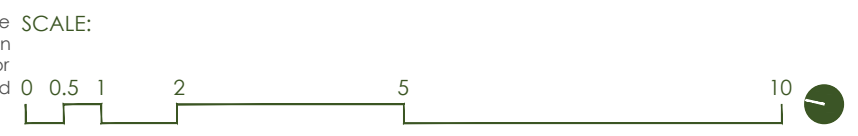


**10** TYPE 3  
Level 0

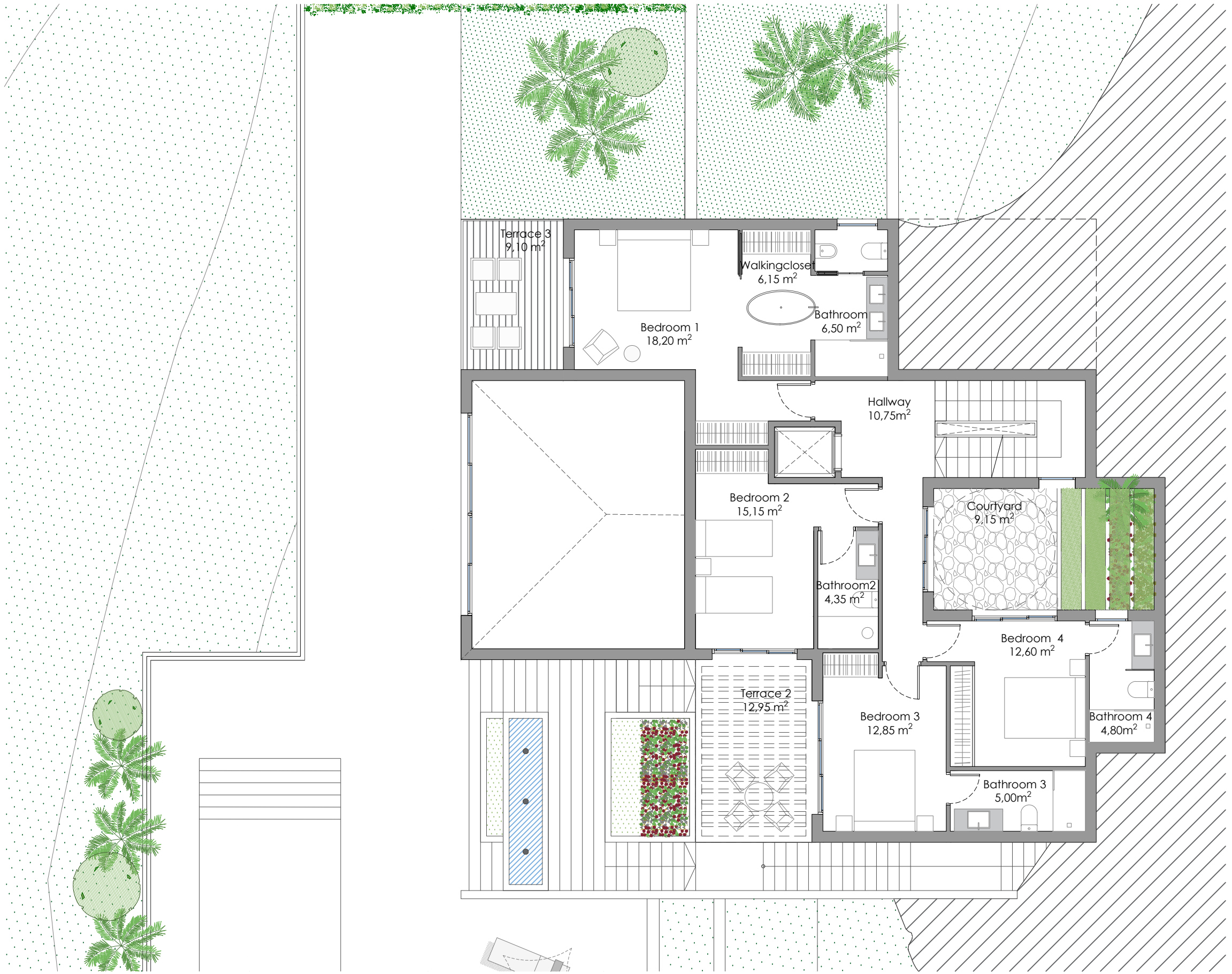


Bedrooms	4
Indoor Const. Area	325,79m <sup>2</sup>
Terrace Const. Area	270,04m <sup>2</sup>
<b>Total Usable Area</b> <small>(According to Dec. 218/2015)</small>	<b>358,37m<sup>2</sup></b>

This floorplan is not definitive; therefore the developers reserves the right to include any necessary modifications given by the technical and/or legal requirements or as ordered by any public administrations or body, provided such changes remain consistent with the final Construction Project. Accessory elements (for example, furniture, including kitchen units) are for illustrative purposes only. Door swings and the layout of sanitary fixtures are not binding. The areas shown are approximate and may be subject to change for technical and/or legal reasons during the execution of the works.



**10** TYPE 3  
Level 1



Bedrooms	4
Indoor Const. Area	325,79m <sup>2</sup>
Terrace Const. Area	270,04m <sup>2</sup>
<b>Total Usable Area</b> <small>(According to Dec. 218/2015)</small>	<b>358,37m<sup>2</sup></b>

This floorplan is not definitive; therefore the developers reserves the right to include any necessary modifications given by the technical and/or legal requirements or as ordered by any public administrations or body, provided such changes remain consistent with the final Construction Project. Accessory elements (for example, furniture, including kitchen units) are for illustrative purposes only. Door swings and the layout of sanitary fixtures are not binding. The areas shown are approximate and may be subject to change for technical and/or legal reasons during the execution of the works.

