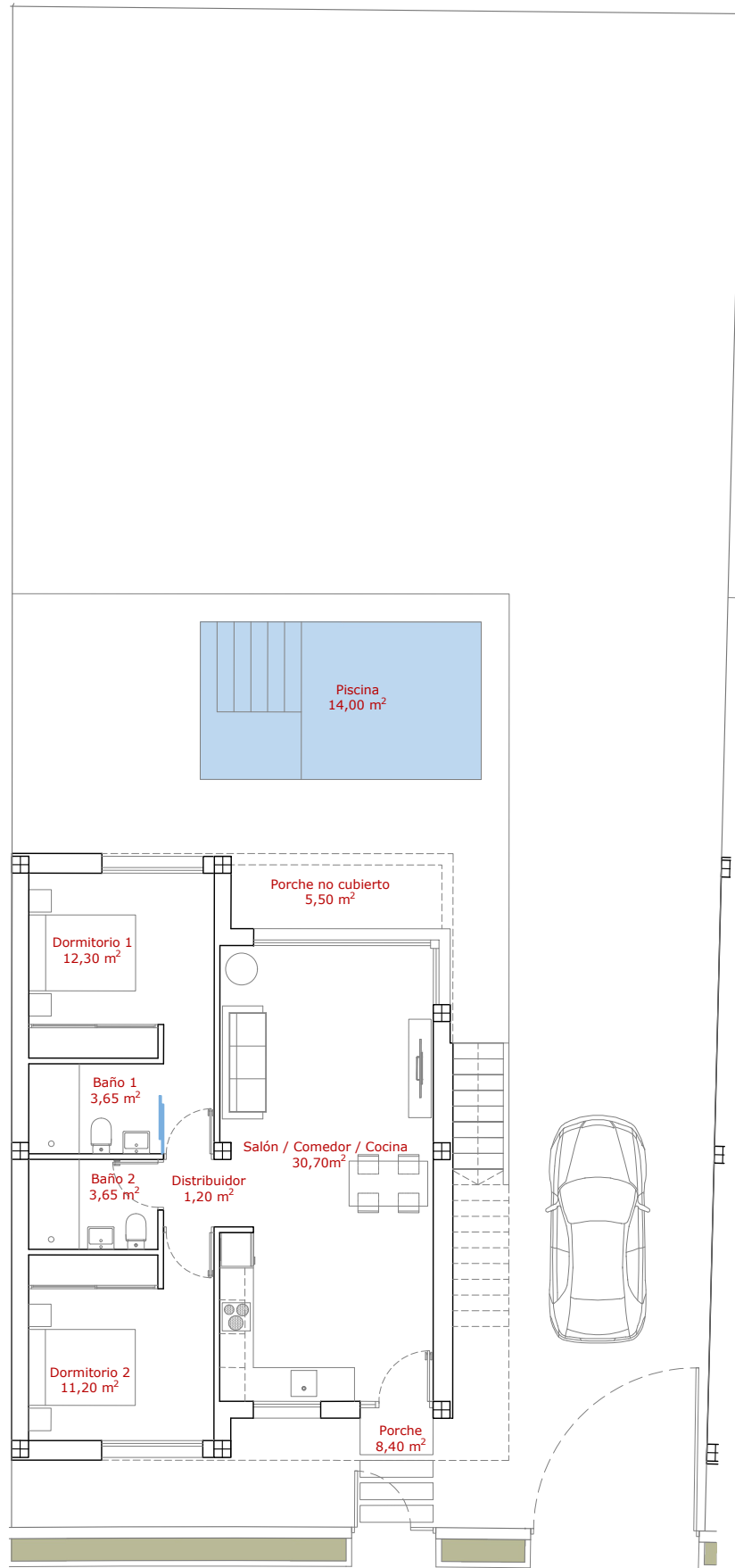
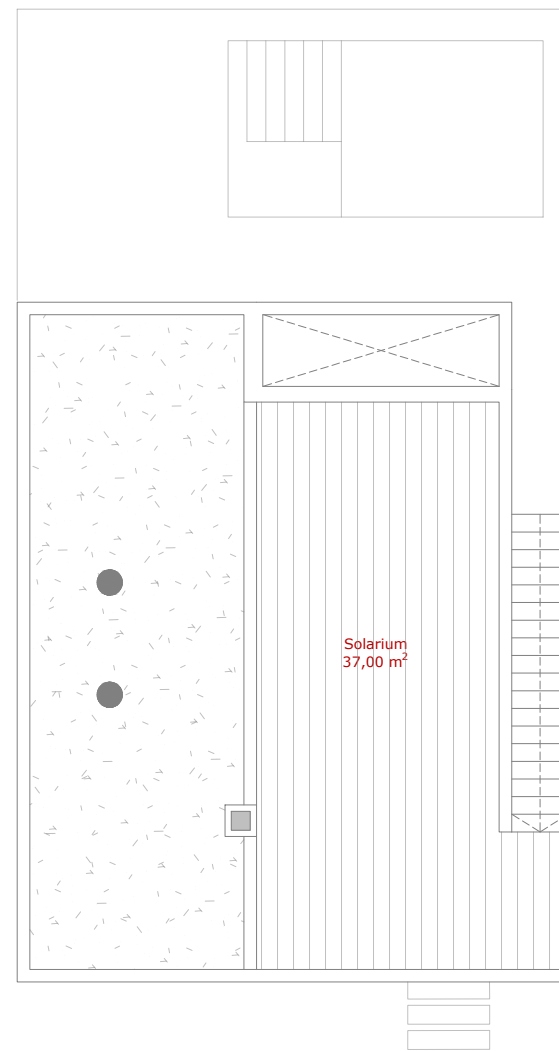


PARCELA P36 - VIVIENDA 47

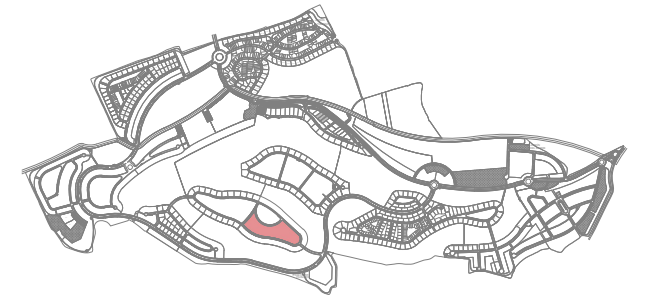


Planta Baja

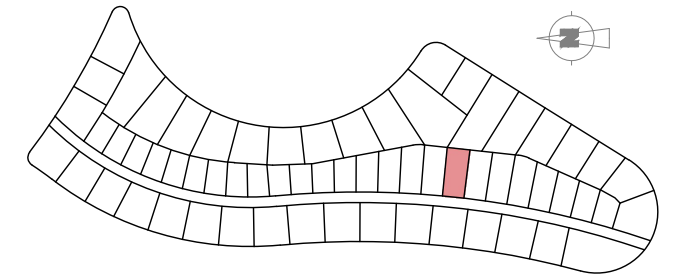


Planta Solarium

Situación



Situación



Superficies útiles	M ²
Salón-Comedor-Cocina	30.70 m ²
Dormitorio 1	12.30 m ²
Dormitorio 2	11.20 m ²
Distribuidor	1.20 m ²
Baño 1	3.65 m ²
Baño 2	3.65 m ²
Total Sup. Útil	62.70 m²
Porche	8.40 m ²
Porche no cubierto	5.50 m ²
Piscina	14.00 m ²
Solarium	37.00 m ²
Superficies Construidas	M²
Vivienda 100%	76.20 m ²
Porche 50%	4.20 m ²
Total Sup. Construida	80.40 m²
Sup. Parcela	350.52 m²