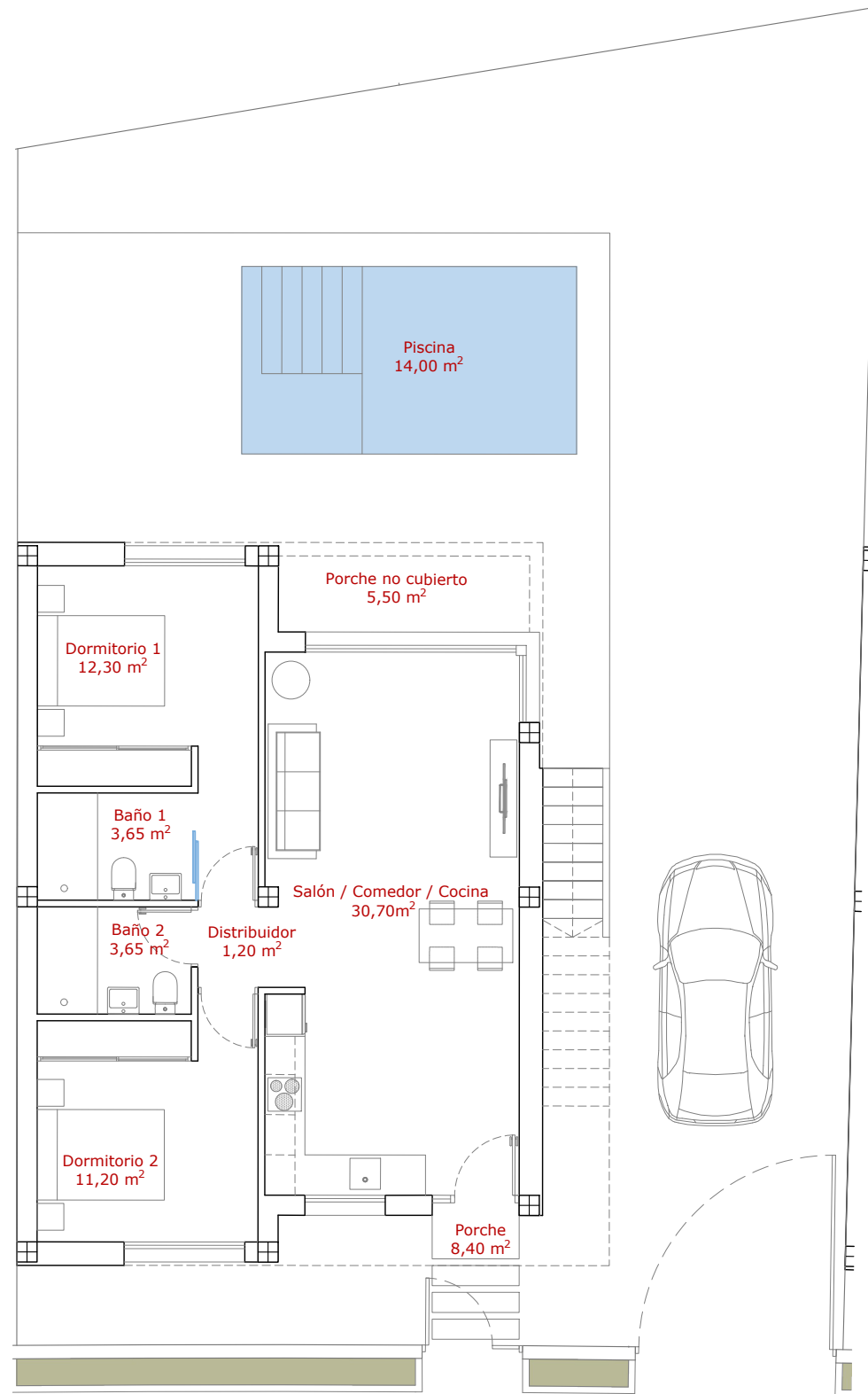
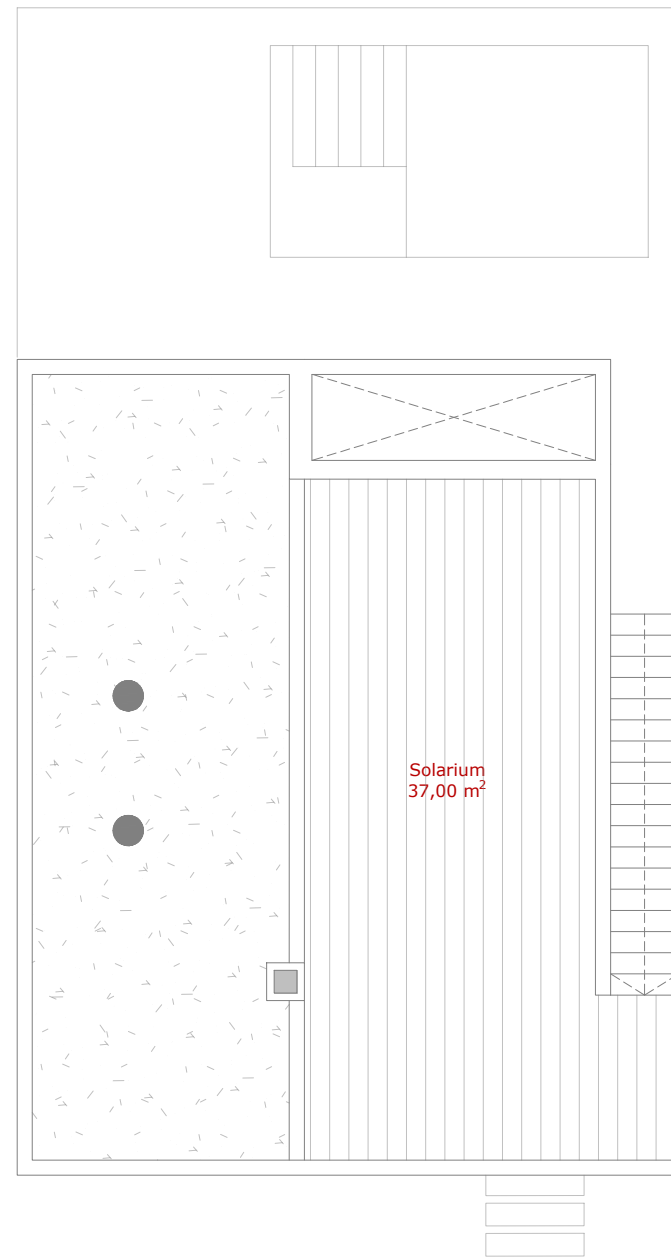


# PARCELA P36 - VIVIENDA 52

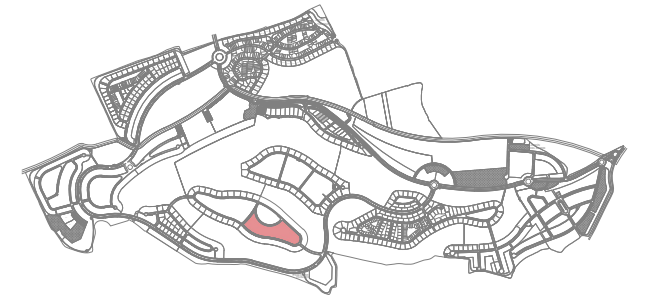


Planta Baja

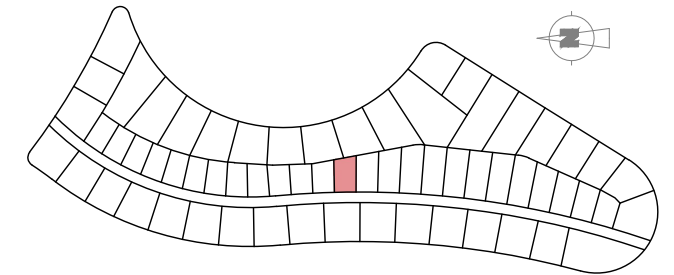


Planta Solarium

## Situación



## Situación



Superficies útiles	M <sup>2</sup>
Salón-Comedor-Cocina	30.70 m <sup>2</sup>
Dormitorio 1	12.30 m <sup>2</sup>
Dormitorio 2	11.20 m <sup>2</sup>
Distribuidor	1.20 m <sup>2</sup>
Baño 1	3.65 m <sup>2</sup>
Baño 2	3.65 m <sup>2</sup>
<b>Total Sup. Útil</b>	<b>62.70 m<sup>2</sup></b>
Porche	8.40 m <sup>2</sup>
Porche no cubierto	5.50 m <sup>2</sup>
Piscina	14.00 m <sup>2</sup>
Solarium	37.00 m <sup>2</sup>
<b>Superficies Construidas</b>	<b>M<sup>2</sup></b>
Vivienda 100%	76.20 m <sup>2</sup>
Porche 50%	4.20 m <sup>2</sup>
<b>Total Sup. Construida</b>	<b>80.40 m<sup>2</sup></b>
<b>Sup. Parcela</b>	<b>246.72 m<sup>2</sup></b>

