

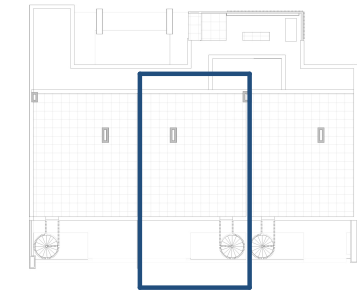
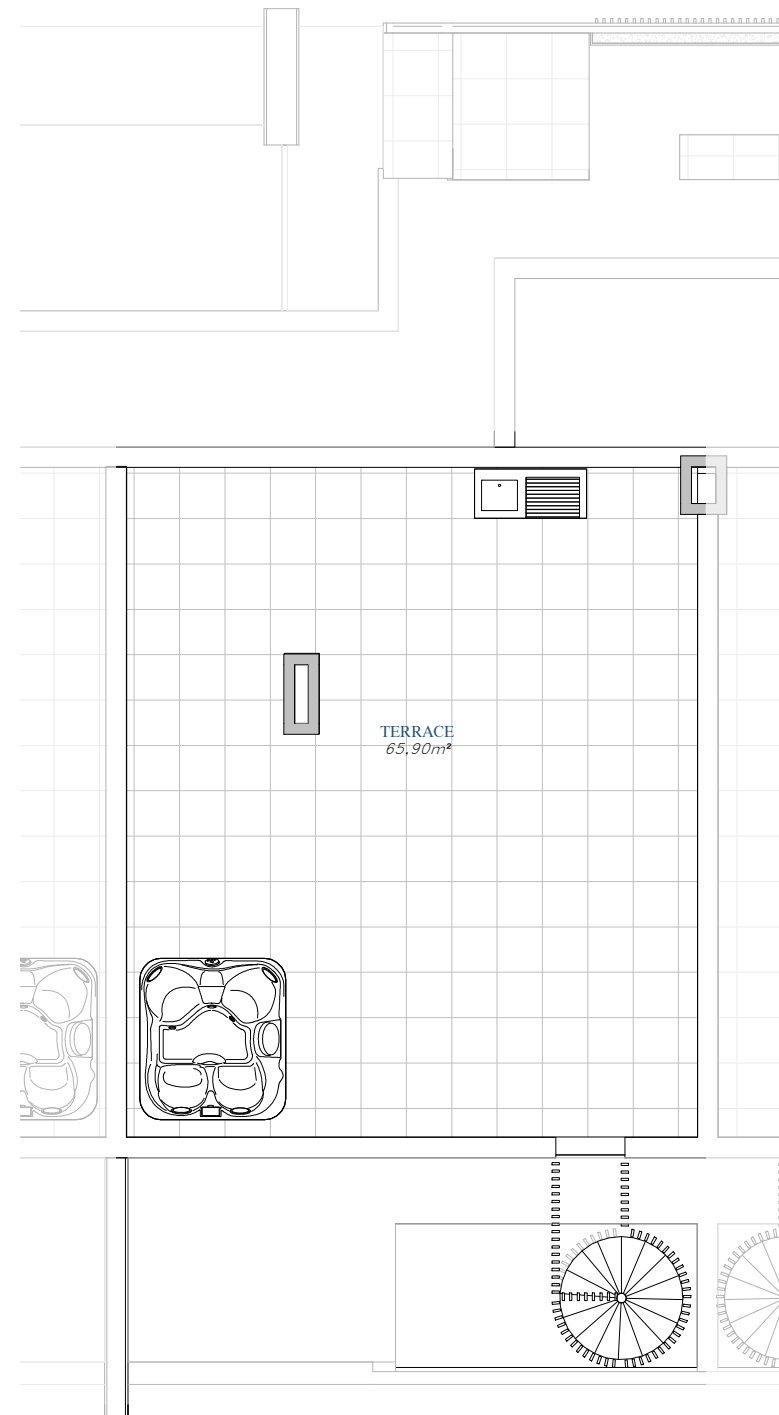
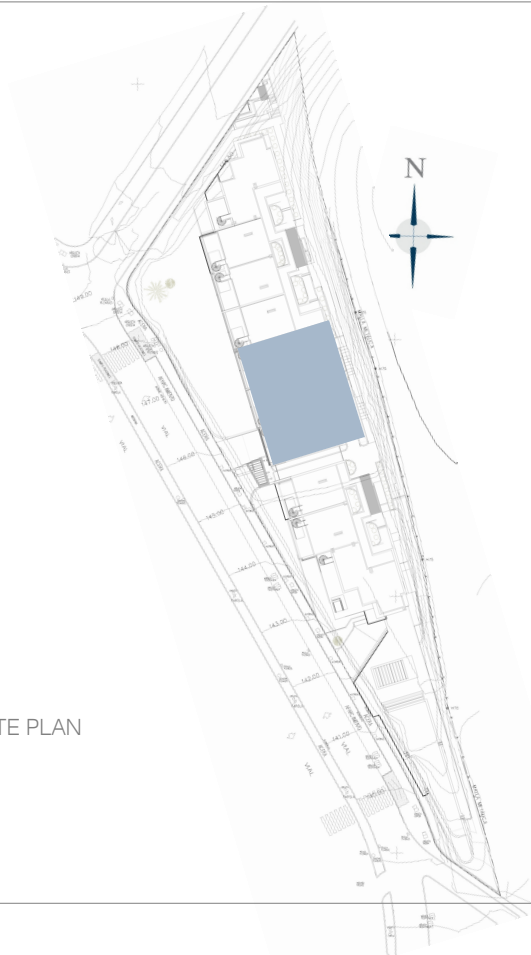
MODULO B

FRONT DOOR 2

SOLARIUM

SKY SOLARIUM B

SITE PLAN



TOTAL USEFUL AREA:
161,25 m²

TOTAL USEFUL AREA:
ACCORDING TO RD 218/2005
76,18 m²

BUILT AREA

Living Area 79,84 m²

Terrace 100,58 m²

TOTAL BUILT AREA: 180,42 m²



GRAPHIC SCALE

