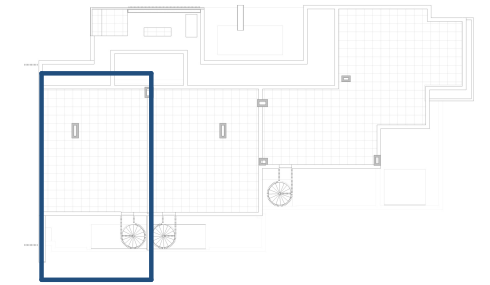
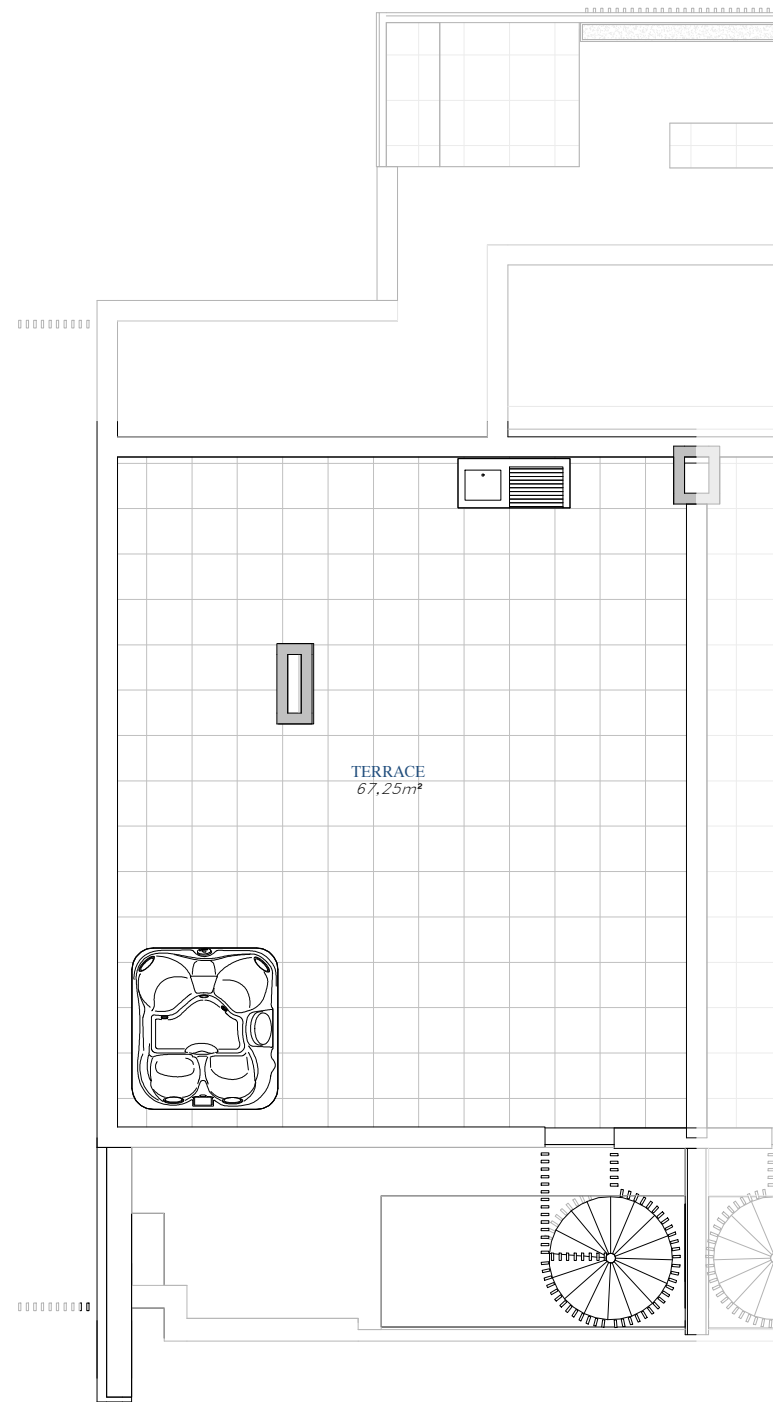
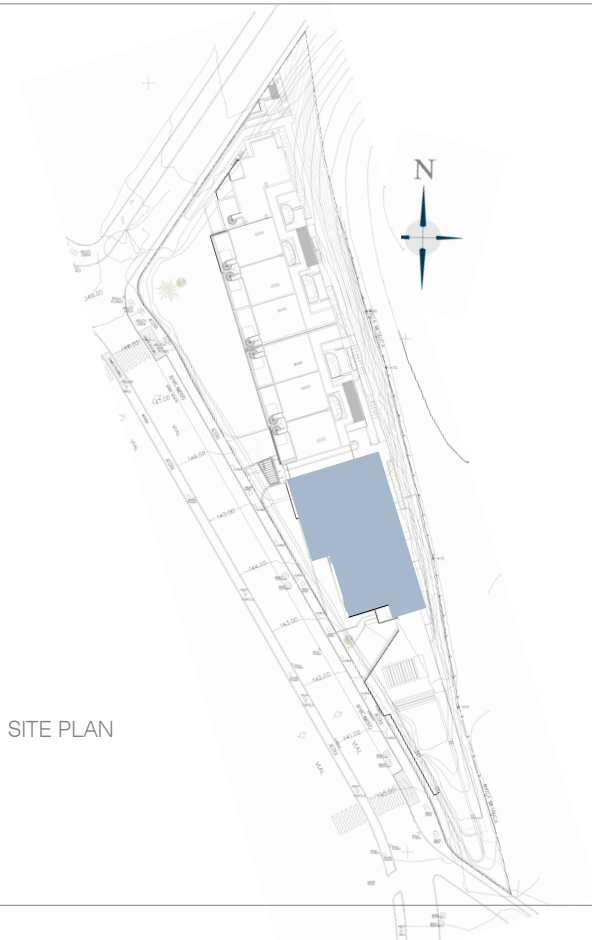


MODULO C

FRONT DOOR 3

SOLARIUM

SKY SOLARIUM A



TOTAL USEFUL AREA:
153,15 m²

TOTAL USEFUL AREA:
ACCORDING TO RD 218/2005
76,18 m²

BUILT AREA

Living Area	80,31 m ²
Terrace	96,78 m ²

TOTAL BUILT AREA: 177,09 m²



GRAPHIC SCALE

