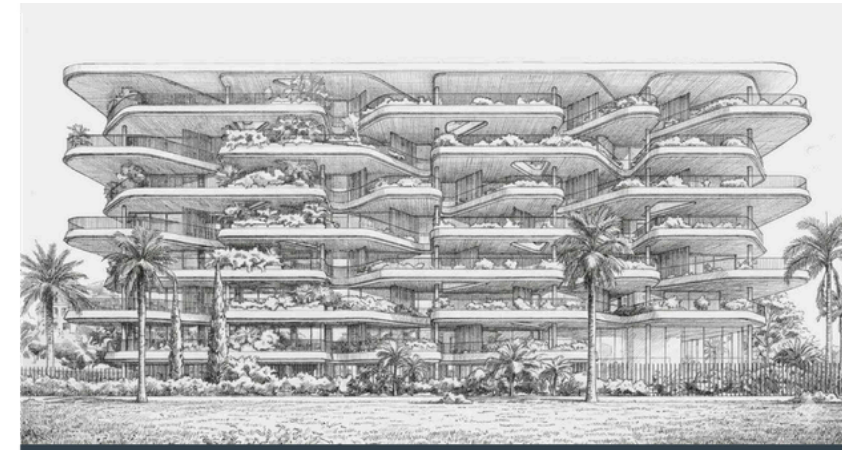
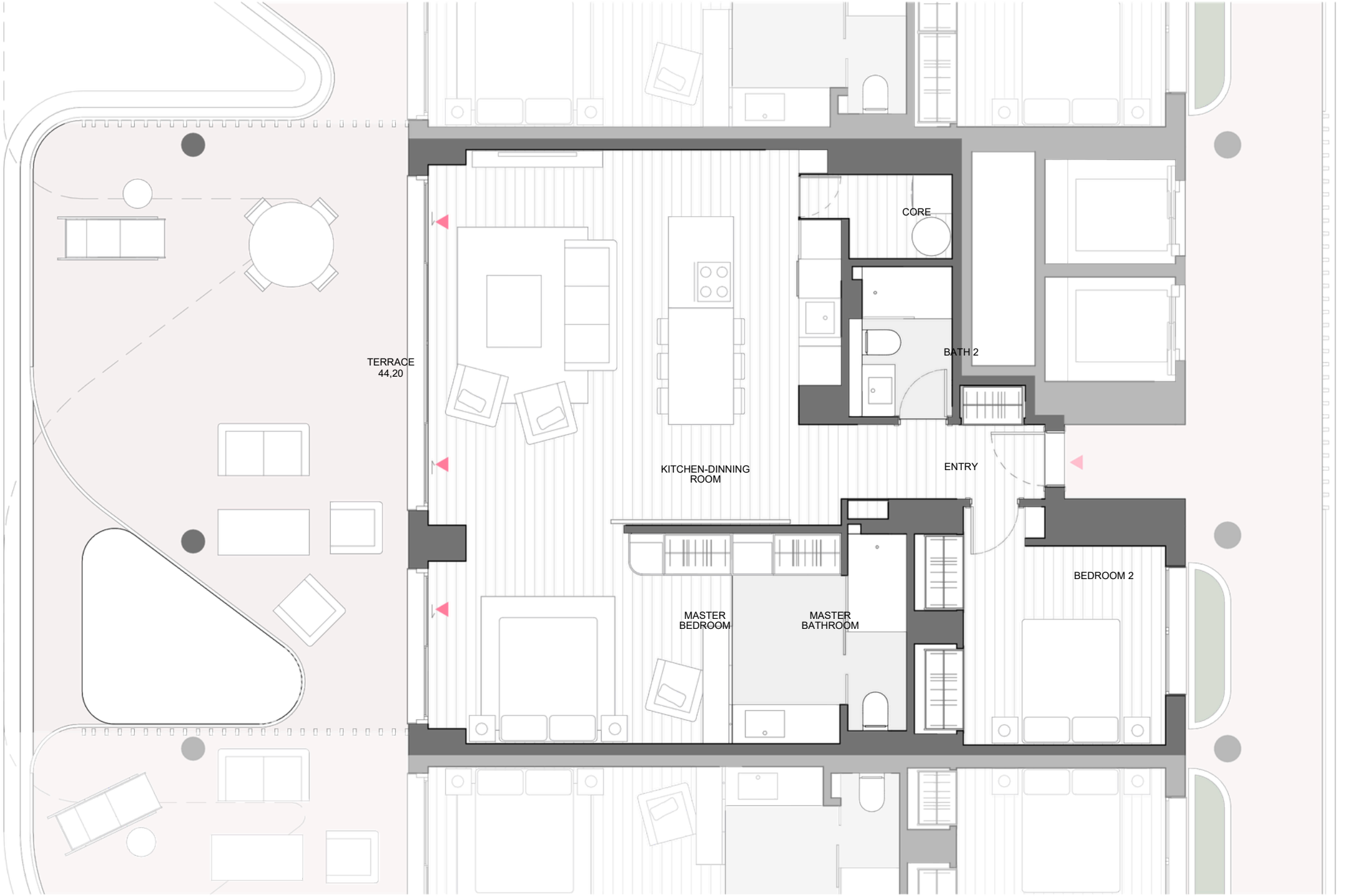
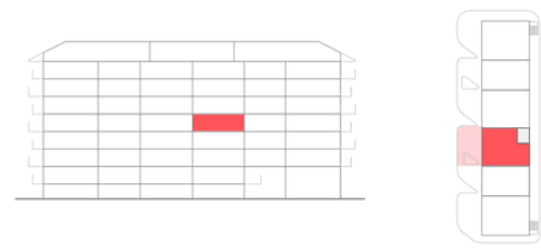


# H22 | BLOCK A | 4° D



## AMENITIES

- GREEN AREA
- SOLARIUM
- SPA & WELLNESS
- GYM
- INDOOR & OUTDOOR POOL
- COWORKING

## TOTAL LIVING AREA (m²)

MASTER BEDROOM	14,66
BEDROOM 2	12,19
KITCHEN-DINNING ROOM	34,41
MASTER BATHROOM	8,29
BATH 2	3,47
ENTRY	5,21
CORE	2,54

	PROJECT AREA	DECREE 218/2005
INTERIOR LIVING AREA	80,77	
TERRACE LIVING AREA	42,58	
TOTAL LIVING AREA	123,35	88,85
INT CONST AREA + PP. CA	121,13	
TERRACE CONSTRUCTED AREA	44,20	
TOTAL CONSTRUCTED AREA	165,33	129,2

(Include proper constructed area, CA proportional part and terrace)



The information contained in this plans can be subject to changes until the end of the project. In case of disagreement between the commercial information and the information of the last project approved, it will attend always the last project approved.

