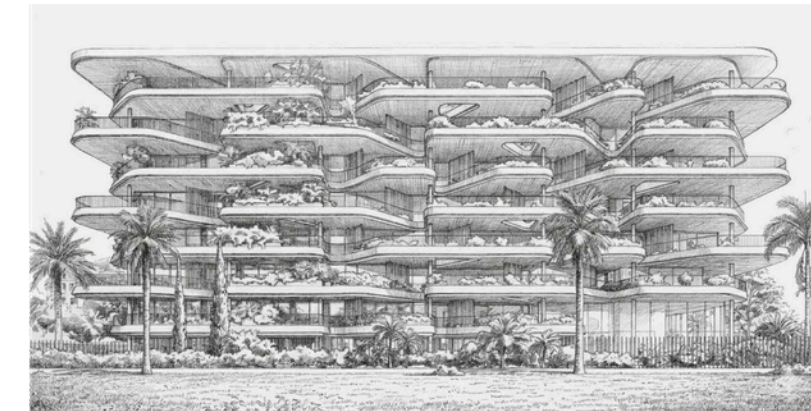
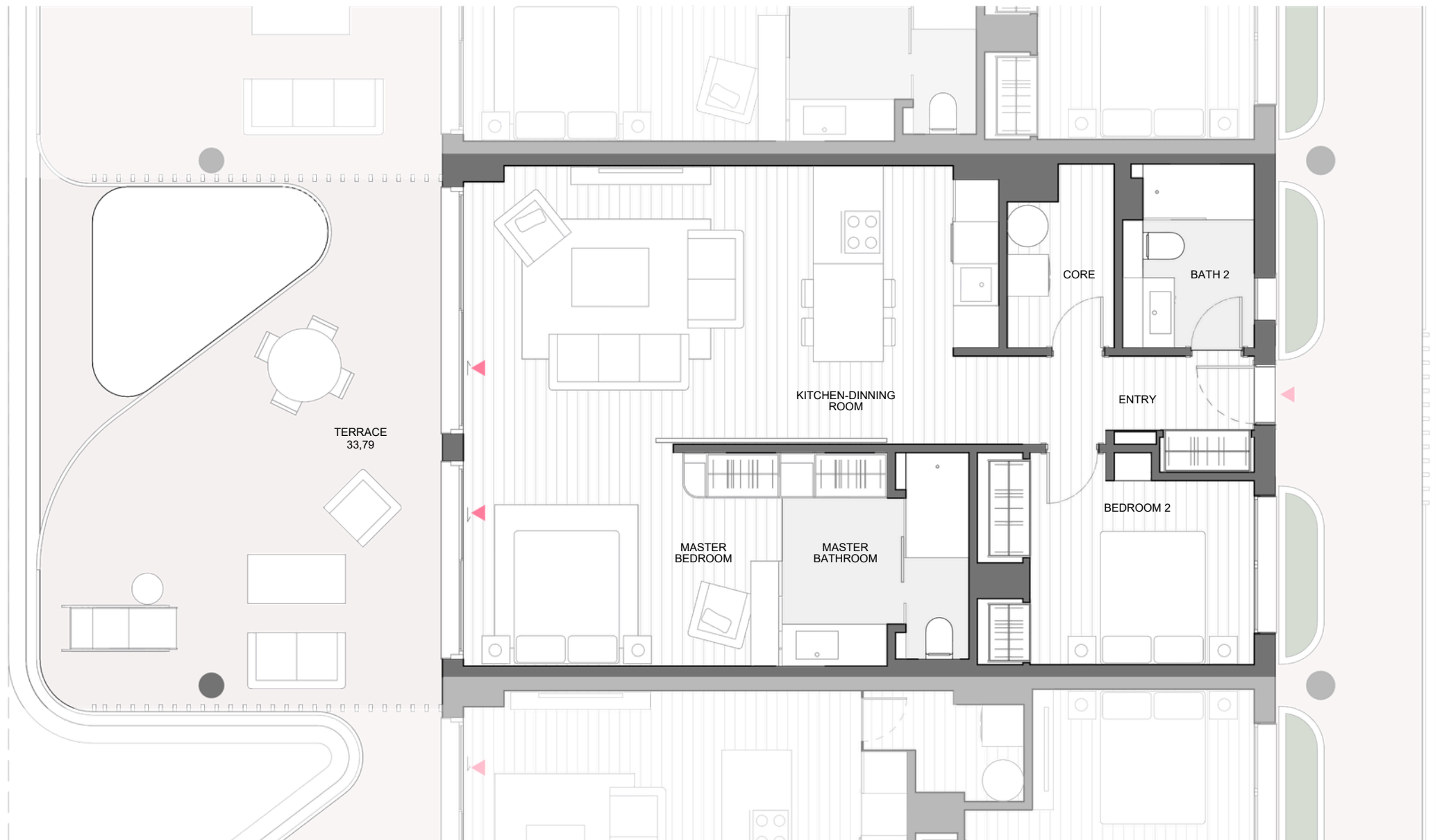
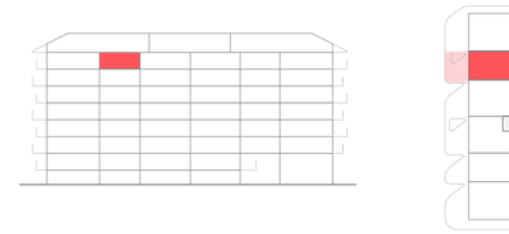


H38 | BLOCK A | 7° B



AMENITIES



TOTAL LIVING AREA (m²)

MASTER BEDROOM	13,89
BEDROOM 2	10,97
KITCHEN-DINNING ROOM	29,29
MASTER BATHROOM	7,86
BATH 2	4,70
ENTRY	5,80
CORE	3,62

	PROJECT AREA	DECREE 218/2005
INTERIOR LIVING AREA	76,13	
TERRACE LIVING AREA	32,52	
TOTAL LIVING AREA	108,65	83,74
INT CONST AREA + PP. CA	115,04	
TERRACE CONSTRUCTED AREA	33,79	
TOTAL CONSTRUCTED AREA	148,83	122,66

(Include proper constructed area, CA proportional part and terrace)



The information contained in this plans can be subject to changes until the end of the project. In case of disagreement between the commercial information and the information of the last project approved, it will attend always the last project approved.

