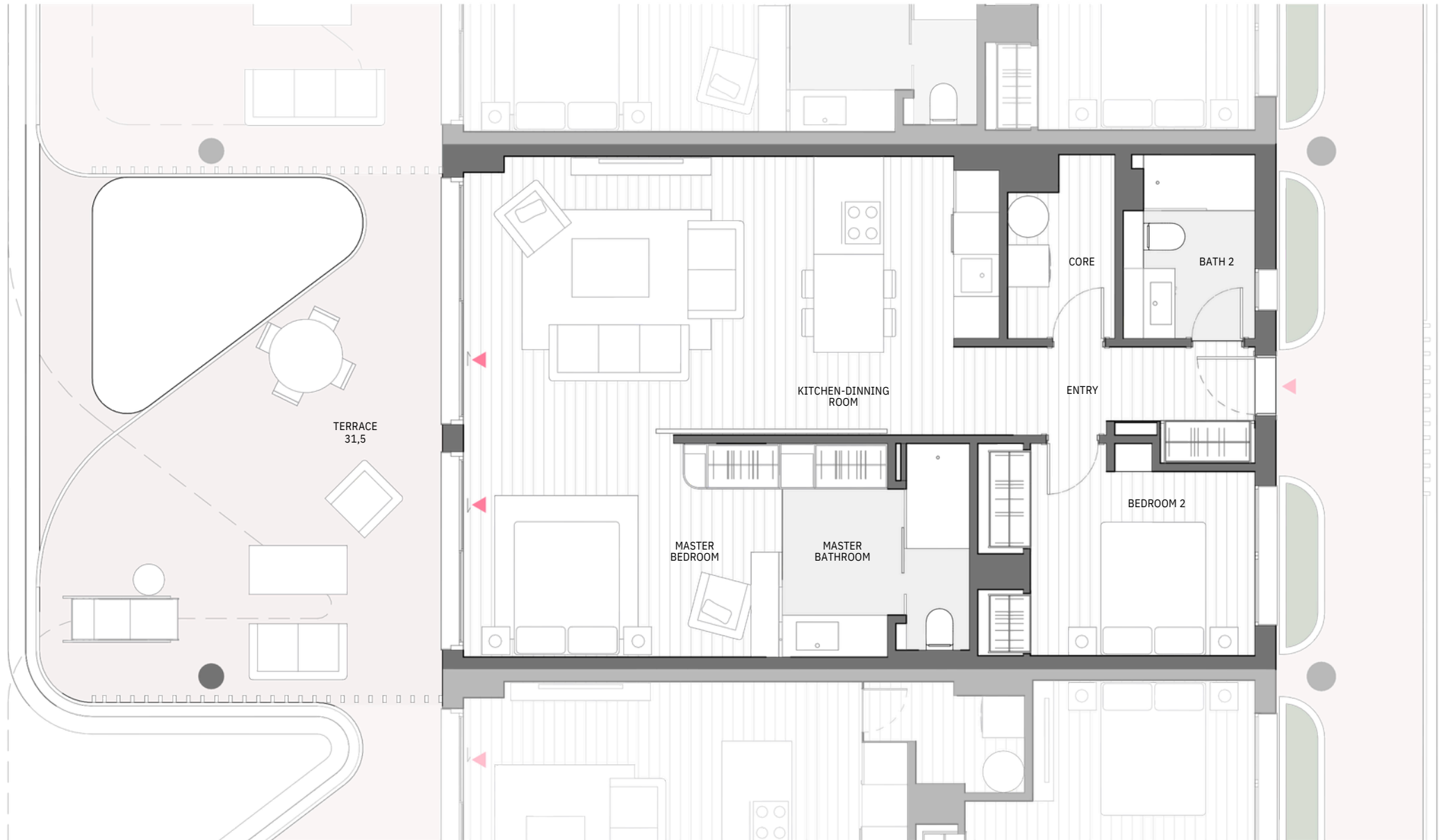
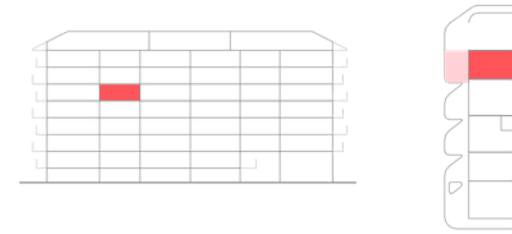


H71 | BLOCK B | 5° B



AMENITIES

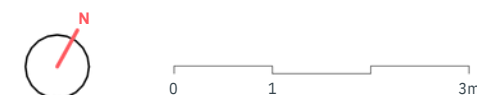


TOTAL LIVING AREA (m²)

MASTER BEDROOM	13.89
BEDROOM 2	10.97
KITCHEN-DINNING ROOM	29.29
MASTER BATHROOM	7.86
BATH 2	4.70
ENTRY	5.80
CORE	3.62

	PROJECT AREA	DECREE 218/2005
INTERIOR LIVING AREA	76,13	
TERRACE LIVING AREA	30,39	
TOTAL LIVING AREA	106,52	83,74
INT CONST AREA + PP. CA	115,05	
TERRACE CONSTRUCTED AREA	31,5	
TOTAL CONSTRUCTED AREA	146,55	122,66

(Include proper constructed area, CA proportional part and terrace)



The information contained in this plans can be subject to changes until the end of the project. In case of disagreement between the comercial information and the information of the last project approved, it will attend always the last project approved.