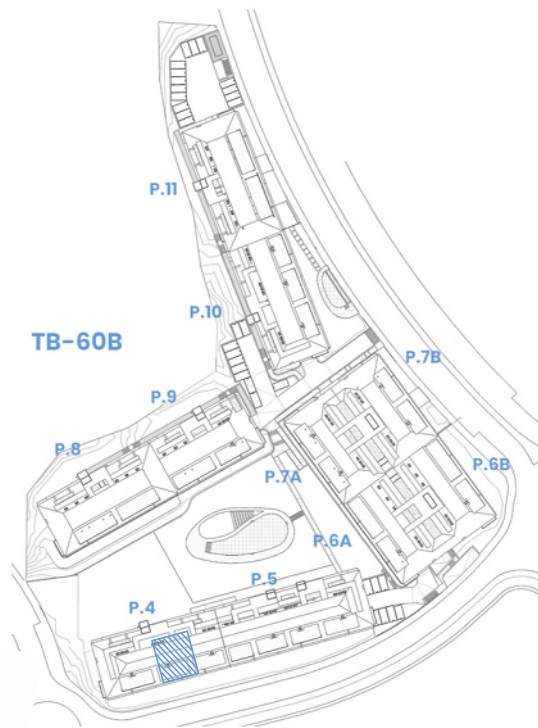
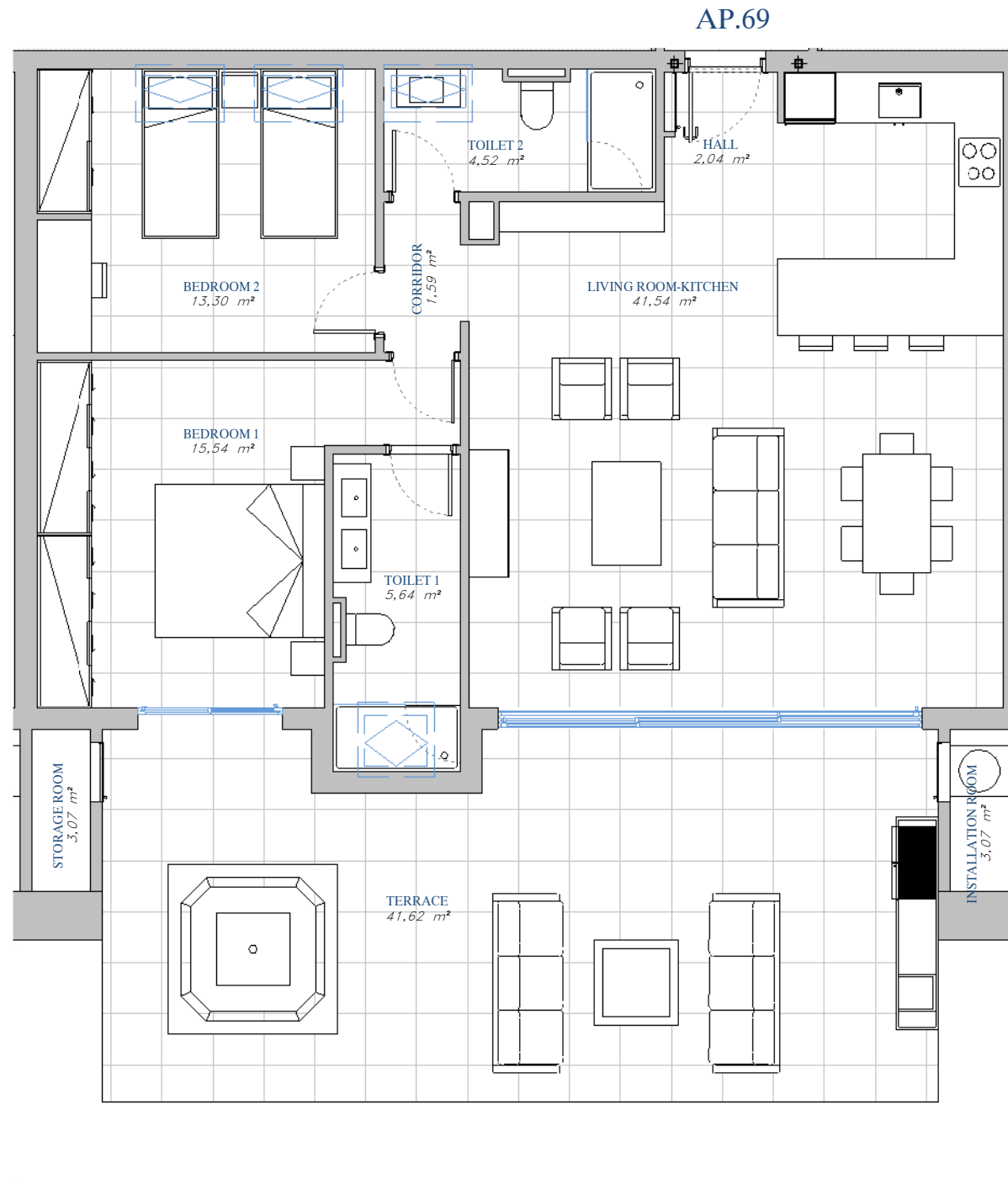


PORTAL 4  
AP.N°69 ATTIC



SITE PLAN



ACCORDING TO DECRETO 218/2005

Useful Area	99,34 m <sup>2</sup>
Built Area	123,24 m <sup>2</sup>

BUILT AREA

Living Area	95,07 m <sup>2</sup>
Terrace Area	50,84 m <sup>2</sup>
TOTAL BUILT AREA:	145,91 m <sup>2</sup>



GRAPHIC SCALE

1 : 75

