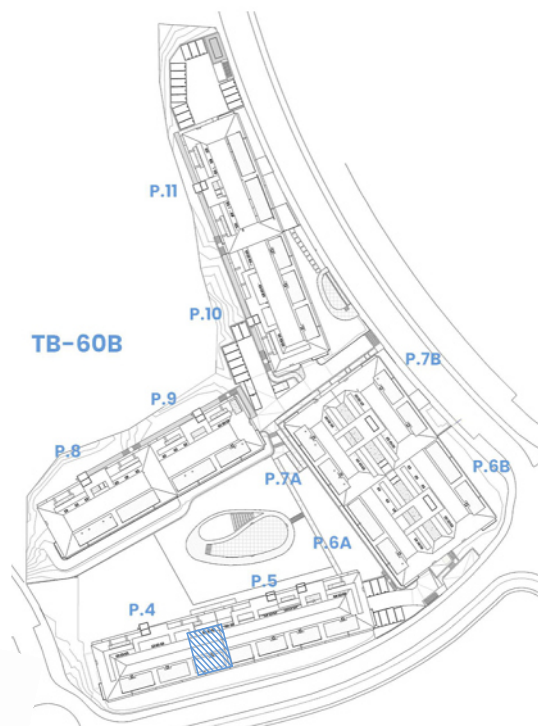
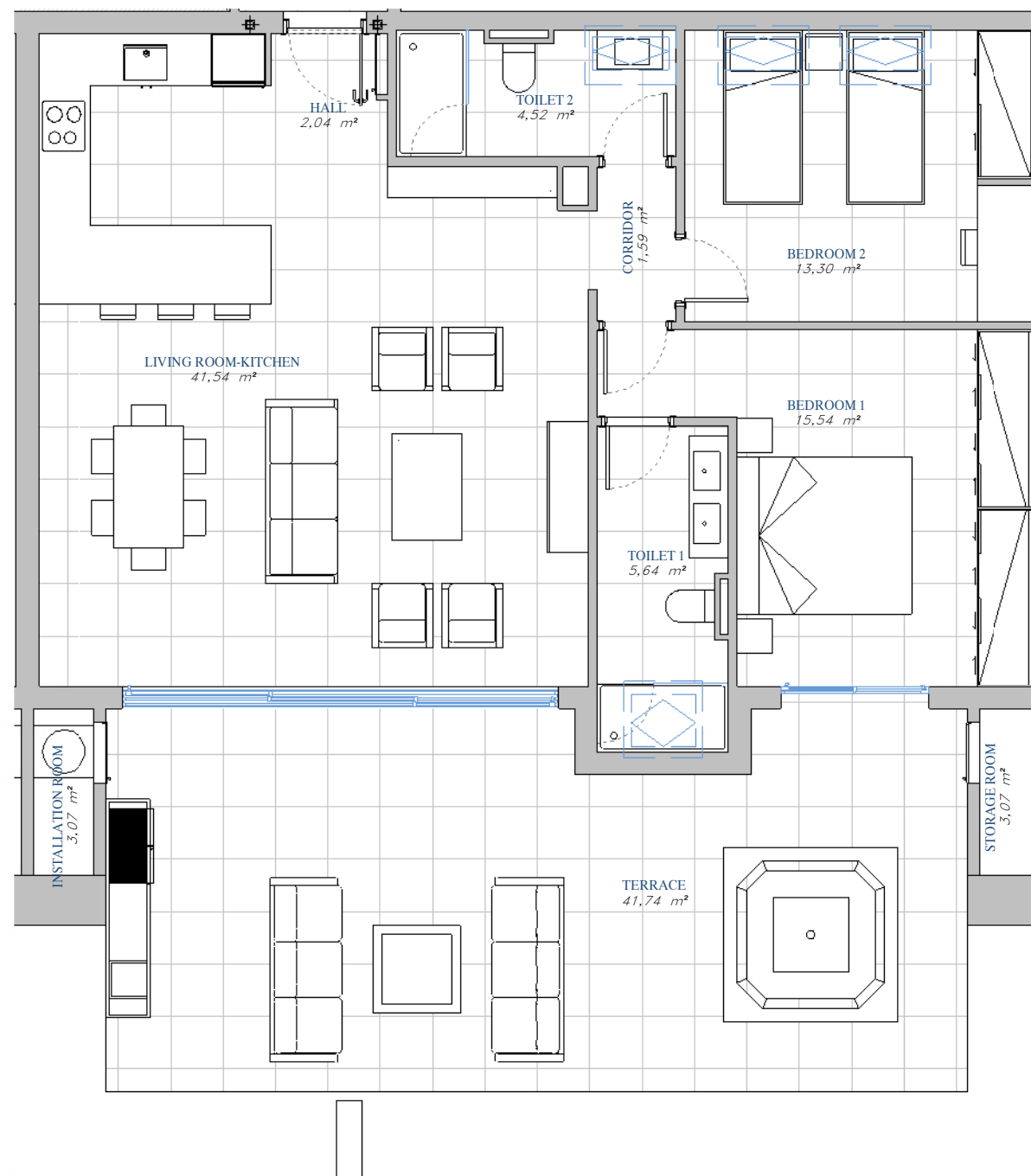


PORTAL 4  
AP.N°70 ATTIC



SITE PLAN

AP.70



ACCORDING TO DECRETO 218/2005

Useful Area	99,34 m <sup>2</sup>
Built Area	123,77 m <sup>2</sup>

BUILT AREA

Living Area	95,51 m <sup>2</sup>
Terrace Area	51,08 m <sup>2</sup>
<b>TOTAL BUILT AREA:</b>	<b>146,59 m<sup>2</sup></b>



GRAPHIC SCALE

1 : 75

