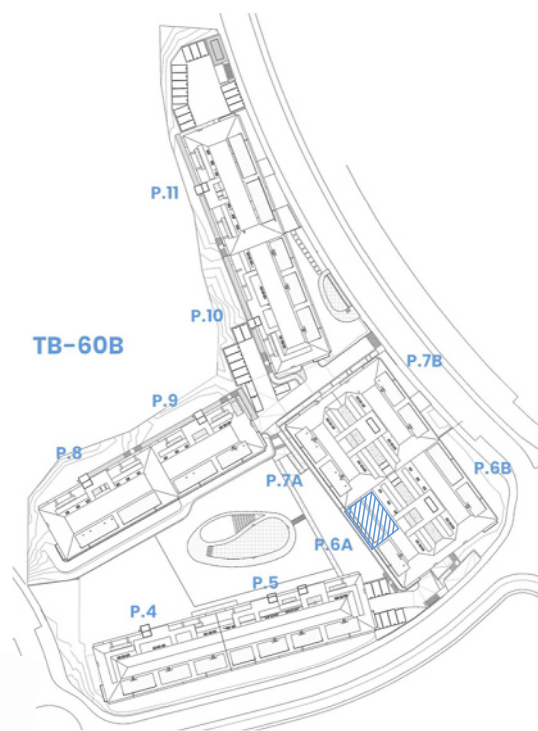
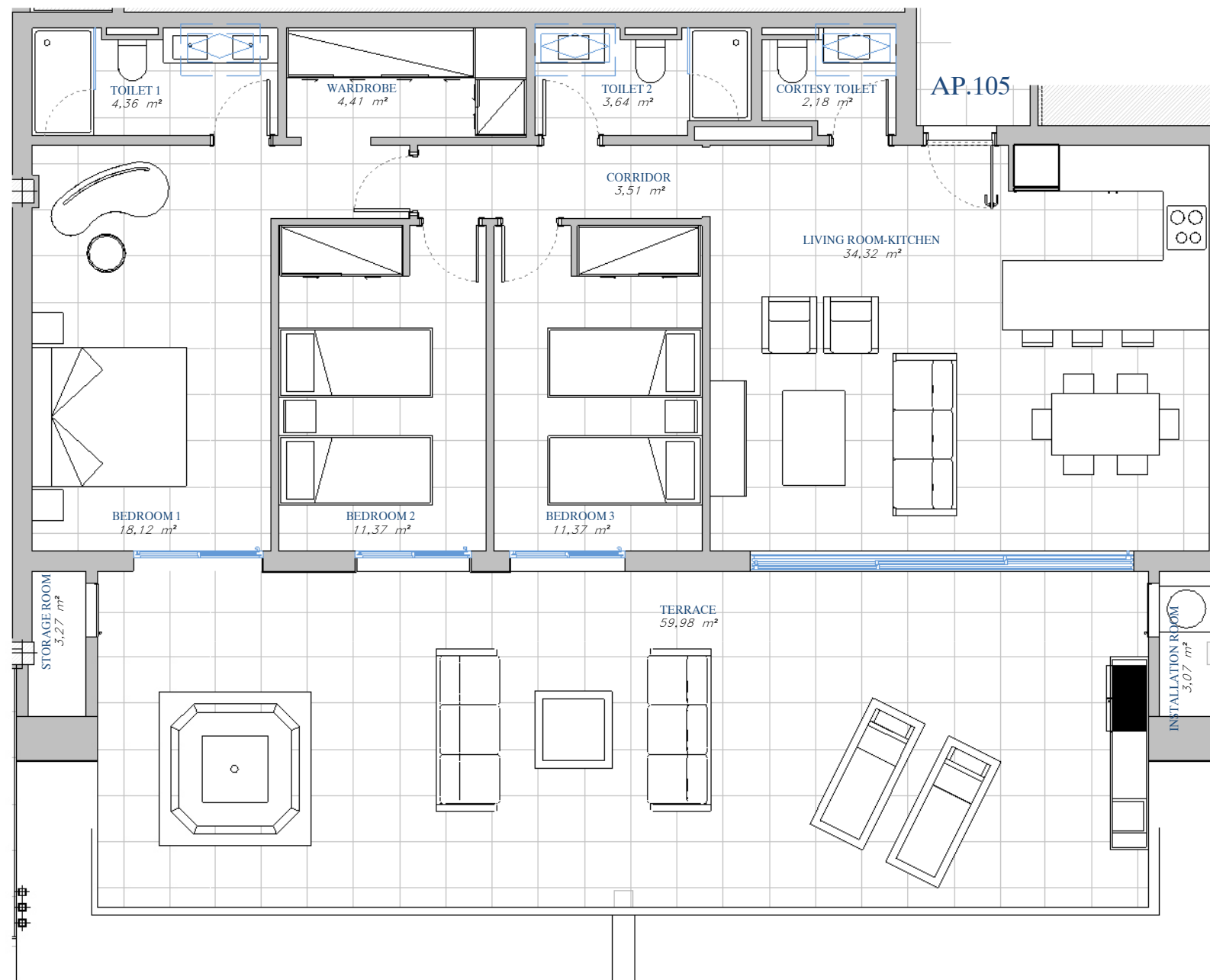


PORTAL 6A
AP.N°105 ATTIC



SITE PLAN

ACCORDING TO DECRETO 218/2005

Useful Area	109,58 m ²
Built Area	138,66 m ²

BUILT AREA

Living Area	107,13 m ²
Terrace Area	69,59 m ²
TOTAL BUILT AREA:	176,73 m²

