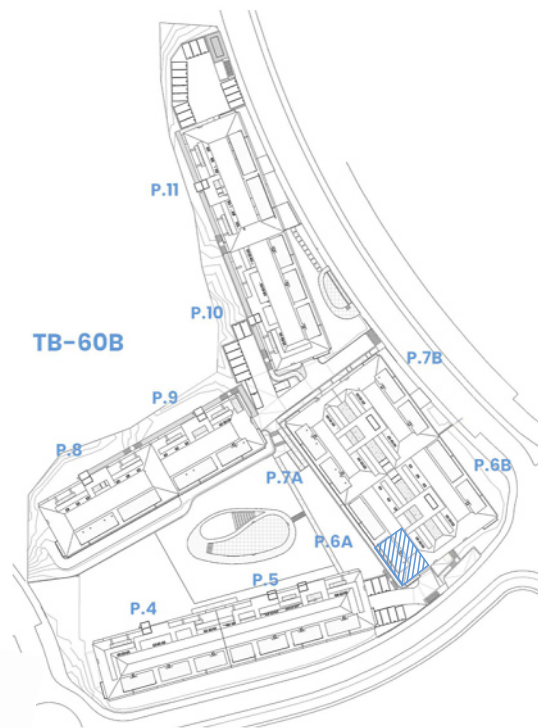
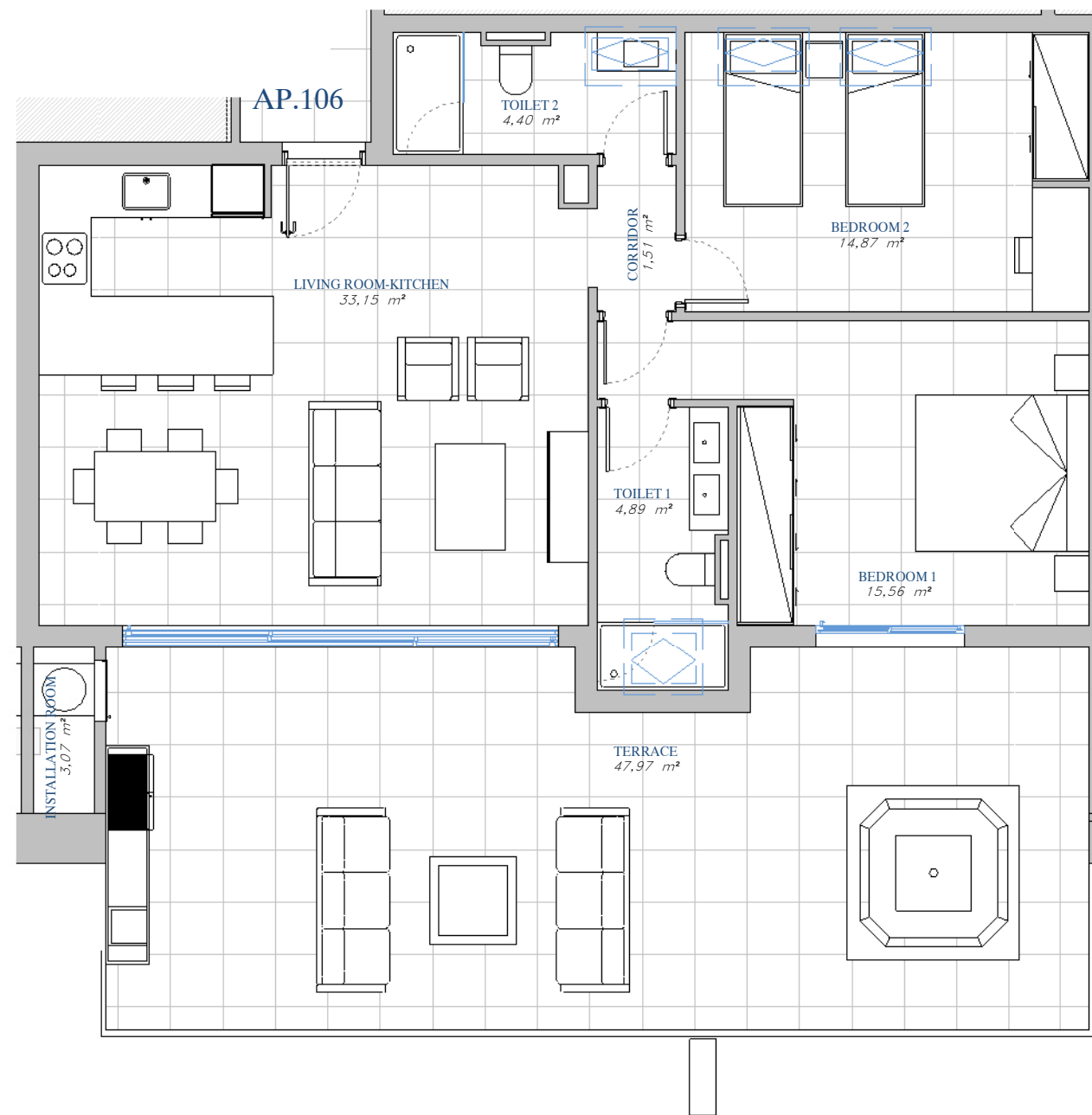


PORTAL 6A
AP.N°106 ATTIC



SITE PLAN



ACCORDING TO DECRETO 218/2005

Useful Area	85,21 m ²
Built Area	109,62 m ²

BUILT AREA

Living Area	84,80 m ²
Terrace Area	53,81 m ²
TOTAL BUILT AREA:	138,61 m²

