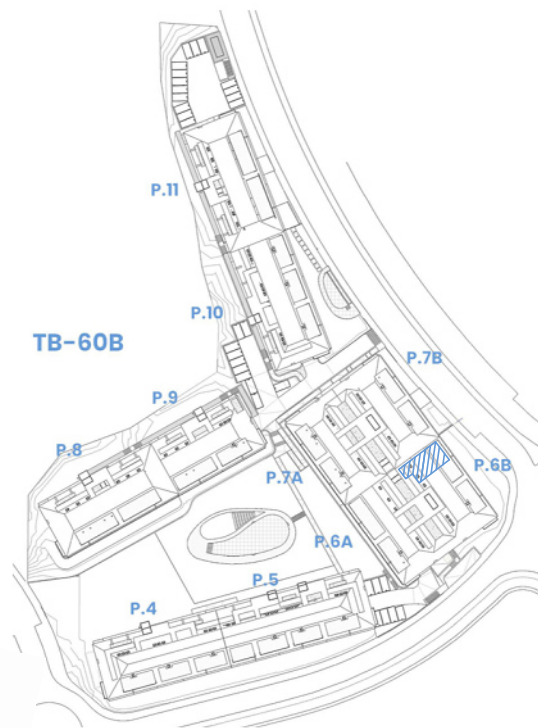
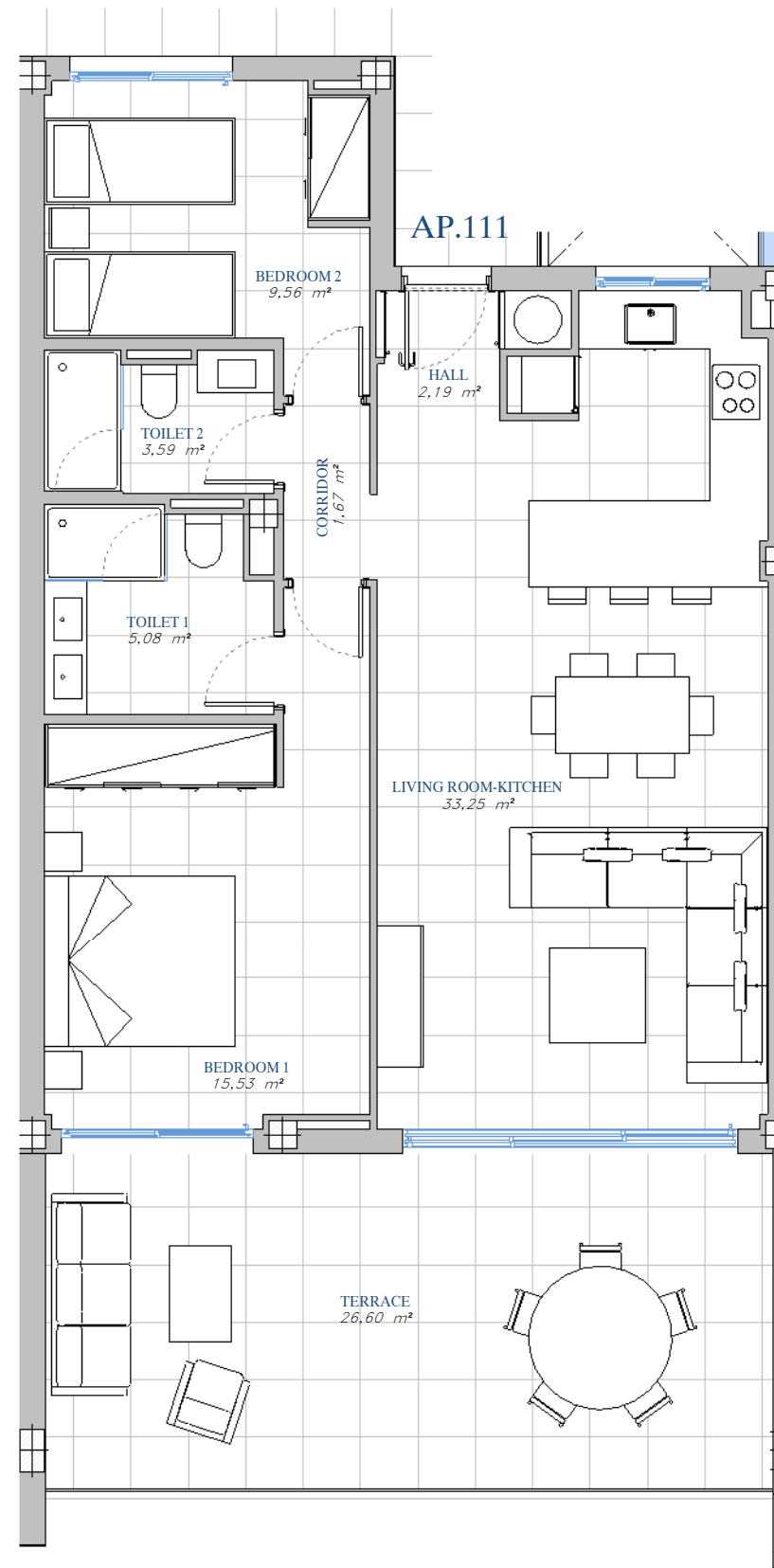


PORTAL 6B
 AP.N°111
 FIRST_FLOOR



SITE PLAN



ACCORDING TO DECRETO 218/2005

Useful Area	77,96 m ²
Built Area	104,54 m ²

BUILT AREA

Living Area	81,12 m ²
Terrace Area	28,17 m ²
TOTAL BUILT AREA:	109,29 m²

