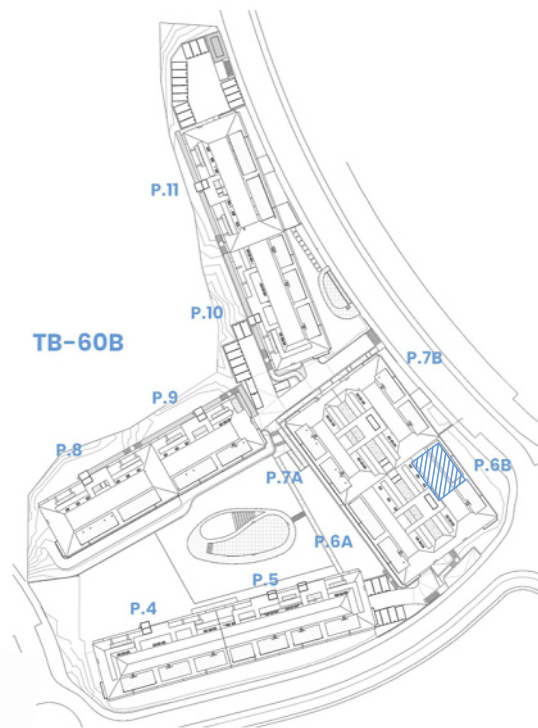
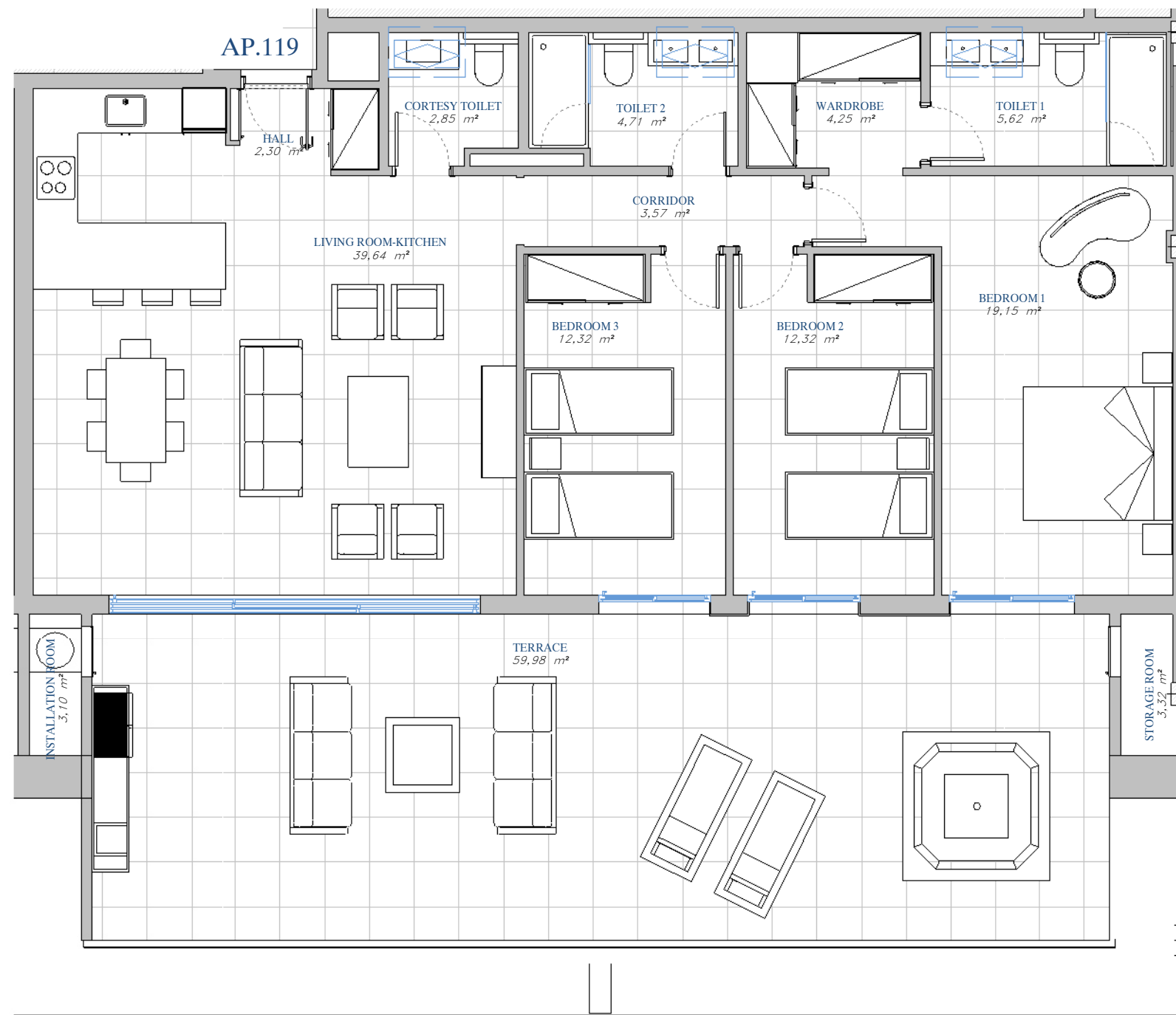


PORTAL 6B
AP.N°119 ATTIC



SITE PLAN

ACCORDING TO DECRETO 218/2005

Useful Area	124,47 m ²
Built Area	157,09 m ²

BUILT AREA

Living Area	121,35 m ²
Terrace Area	69,76 m ²
TOTAL BUILT AREA:	191,11 m²

