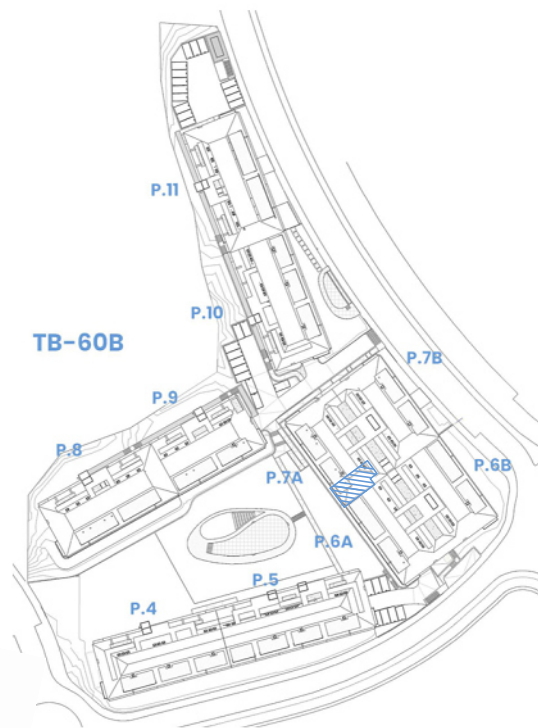
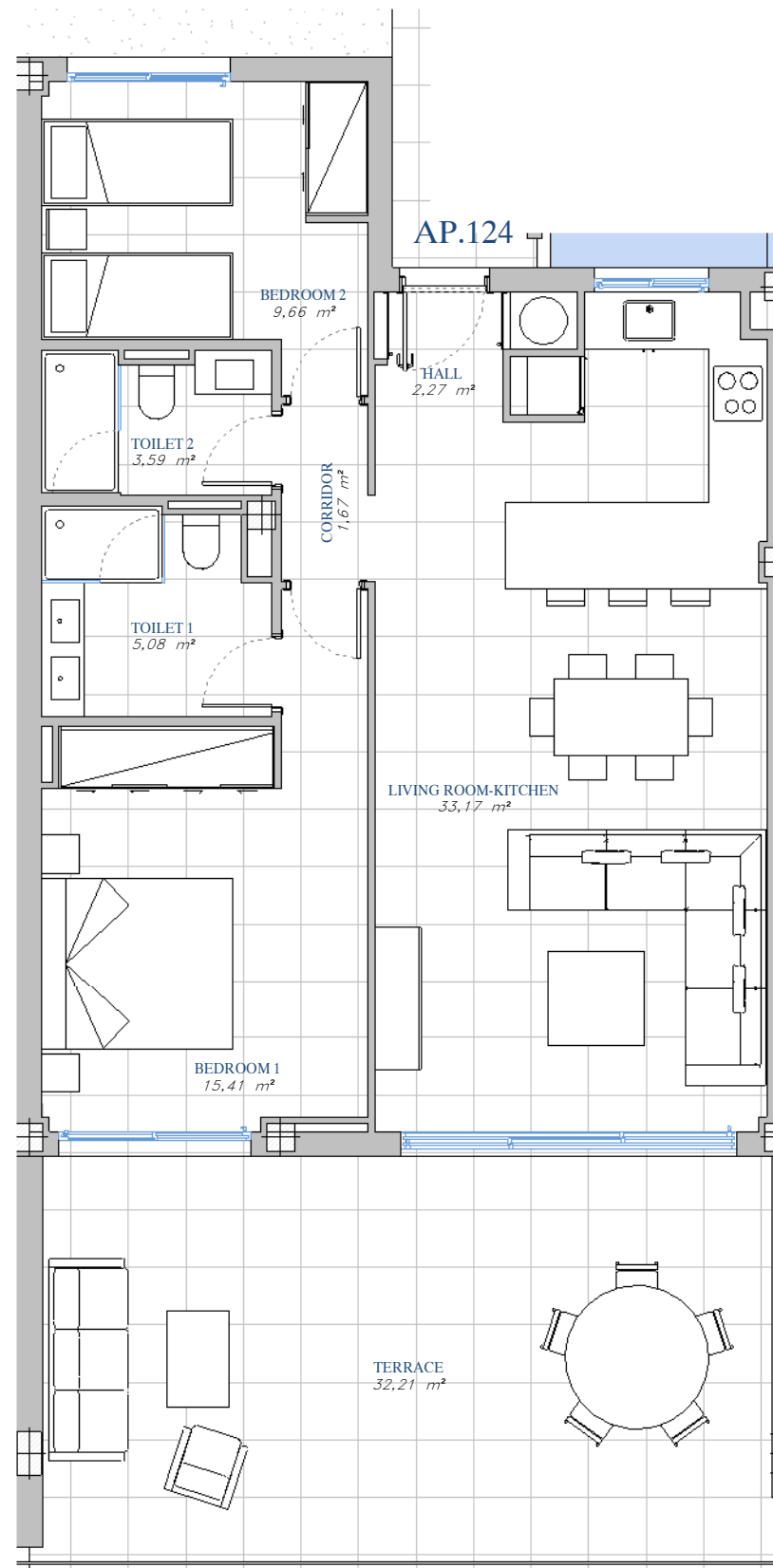


PORTAL 7A
 AP.Nº124
 GROUND_FLOOR



SITE PLAN



ACCORDING TO DECRETO 218/2005

Useful Area	77,94 m ²
Built Area	104,76 m ²

BUILT AREA

Living Area	81,31 m ²
Terrace Area	33,99 m ²
TOTAL BUILT AREA:	115,30 m²

