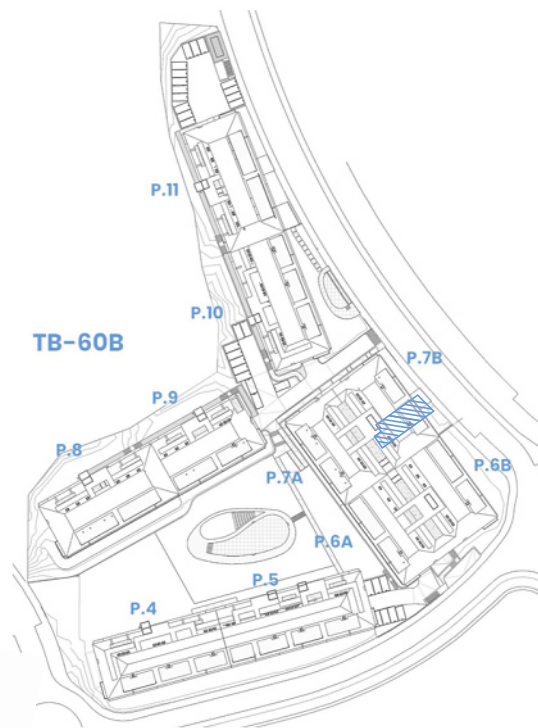
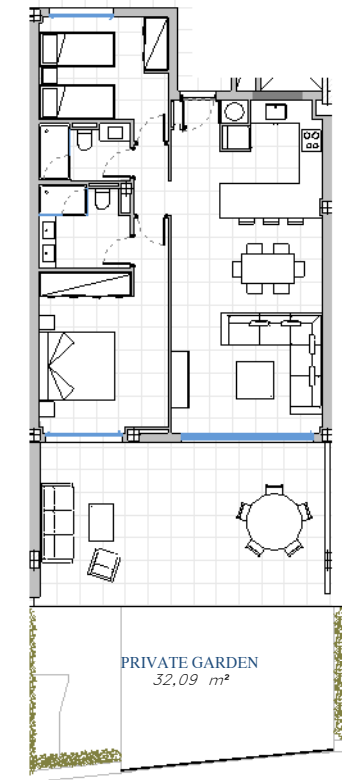
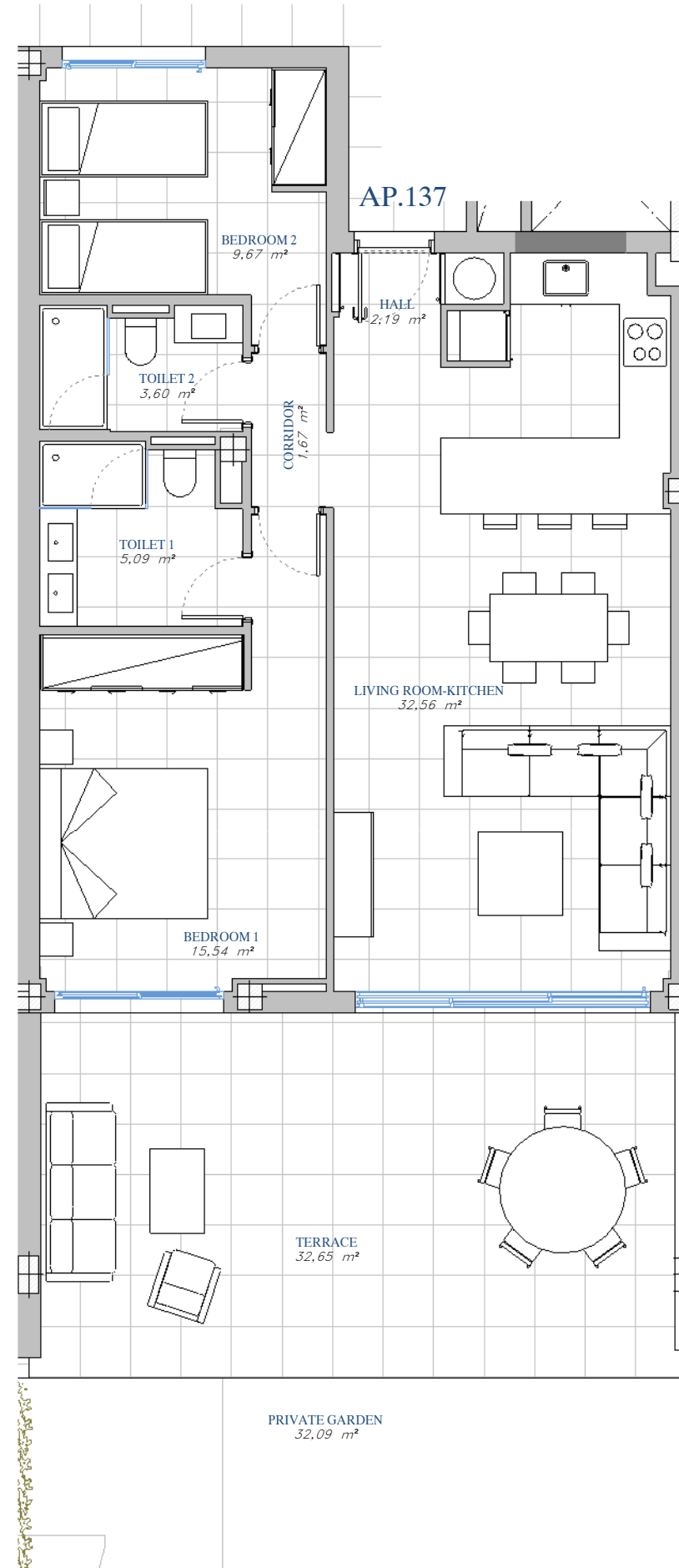


PORTAL 7B
 AP.N°137
 GROUND_FLOOR



SITE PLAN



ACCORDING TO DECRETO 218/2005

Useful Area	77,35 m ²
Built Area	103,65 m ²

BUILT AREA

Living Area	80,43 m ²
Terrace Area	33,56 m ²
Garden	32,09 m ²
TOTAL BUILT AREA:	146,08 m²

