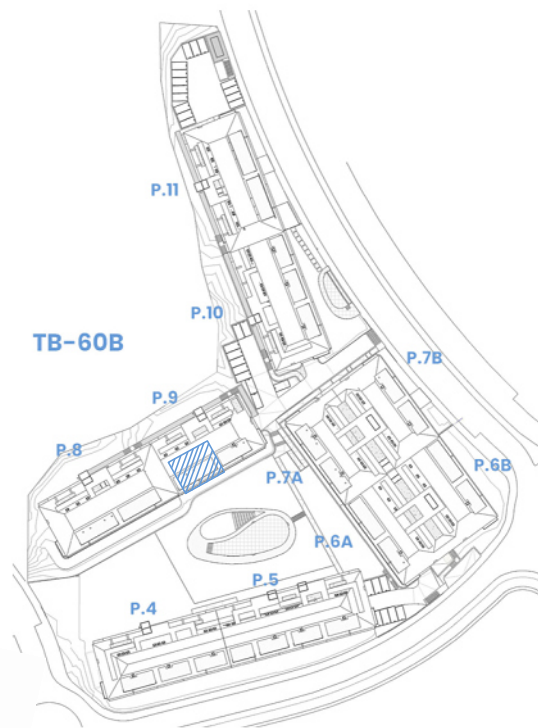
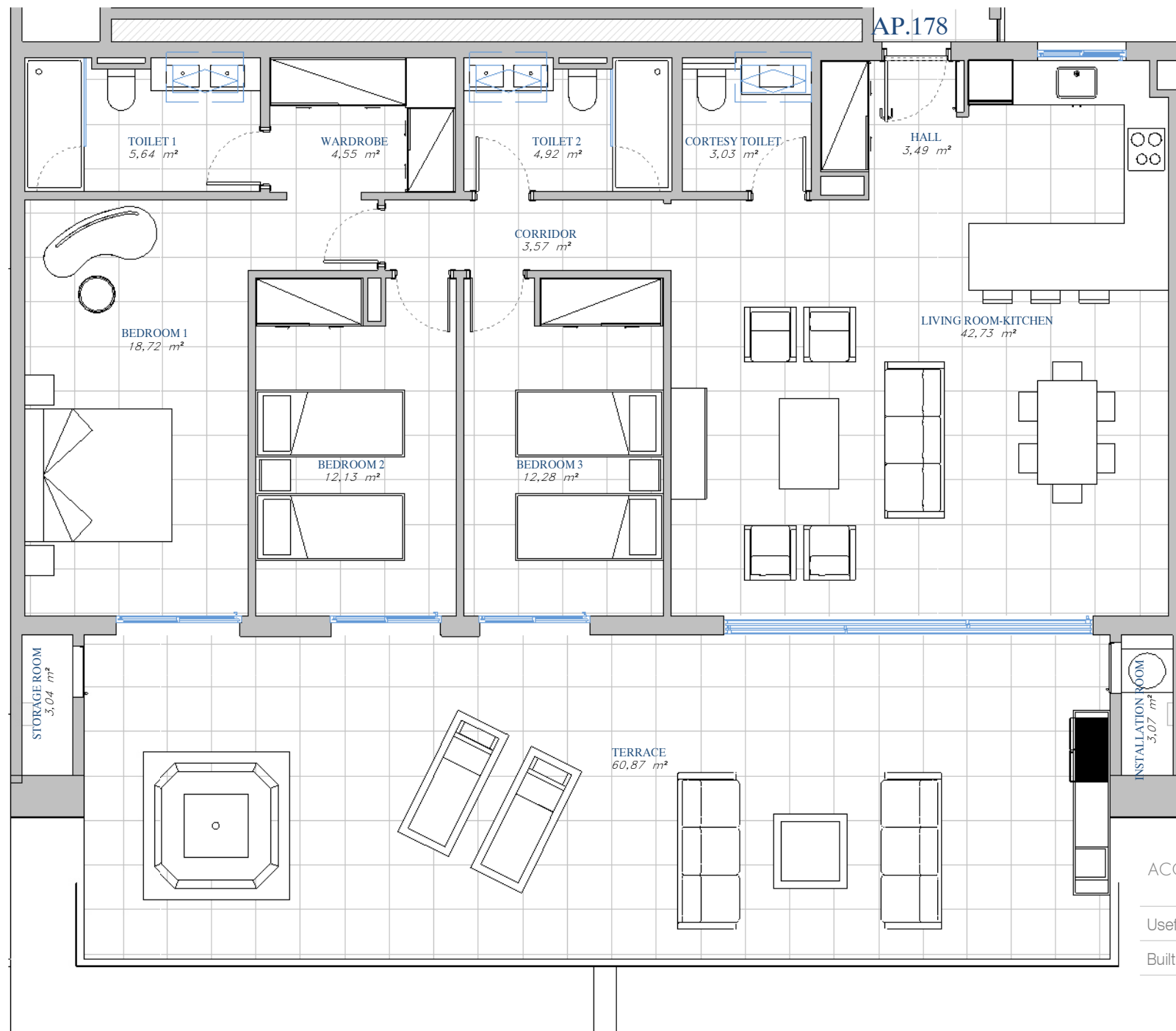


PORTAL 9
AP.N°178 ATTIC



SITE PLAN



ACCORDING TO DECRETO 218/2005

Useful Area	128,89 m ²
Built Area	163,63 m ²

BUILT AREA

Living Area	126,46 m ²
Terrace Area	70,78 m ²
TOTAL BUILT AREA:	197,24 m²



GRAPHIC SCALE

1 : 75

