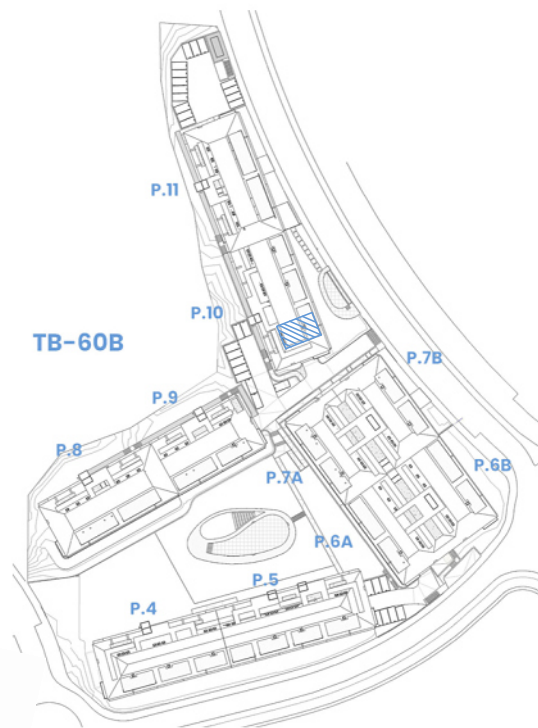
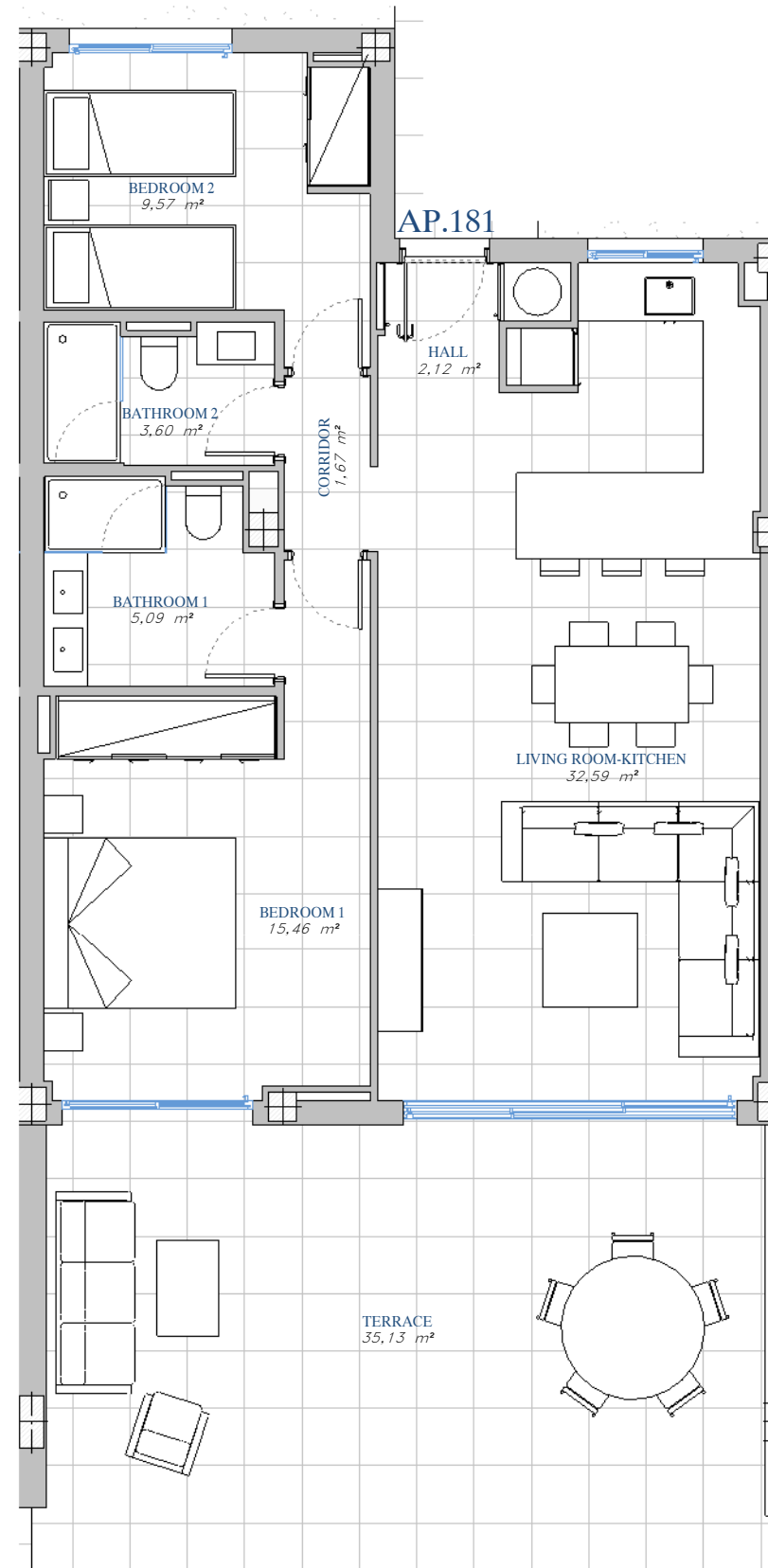


PORTAL 10
 AP.N°181
 GROUND_FLOOR



SITE PLAN



ACCORDING TO DECRETO 218/2005

Useful Area	77,11 m ²
Built Area	103,63 m ²

BUILT AREA

Living Area	80,43 m ²
Terrace Area	36,04 m ²
TOTAL BUILT AREA:	116,47 m ²

