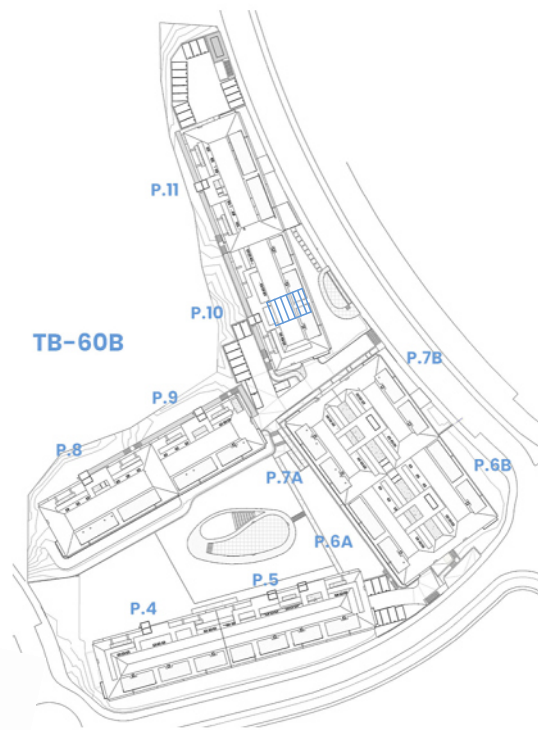
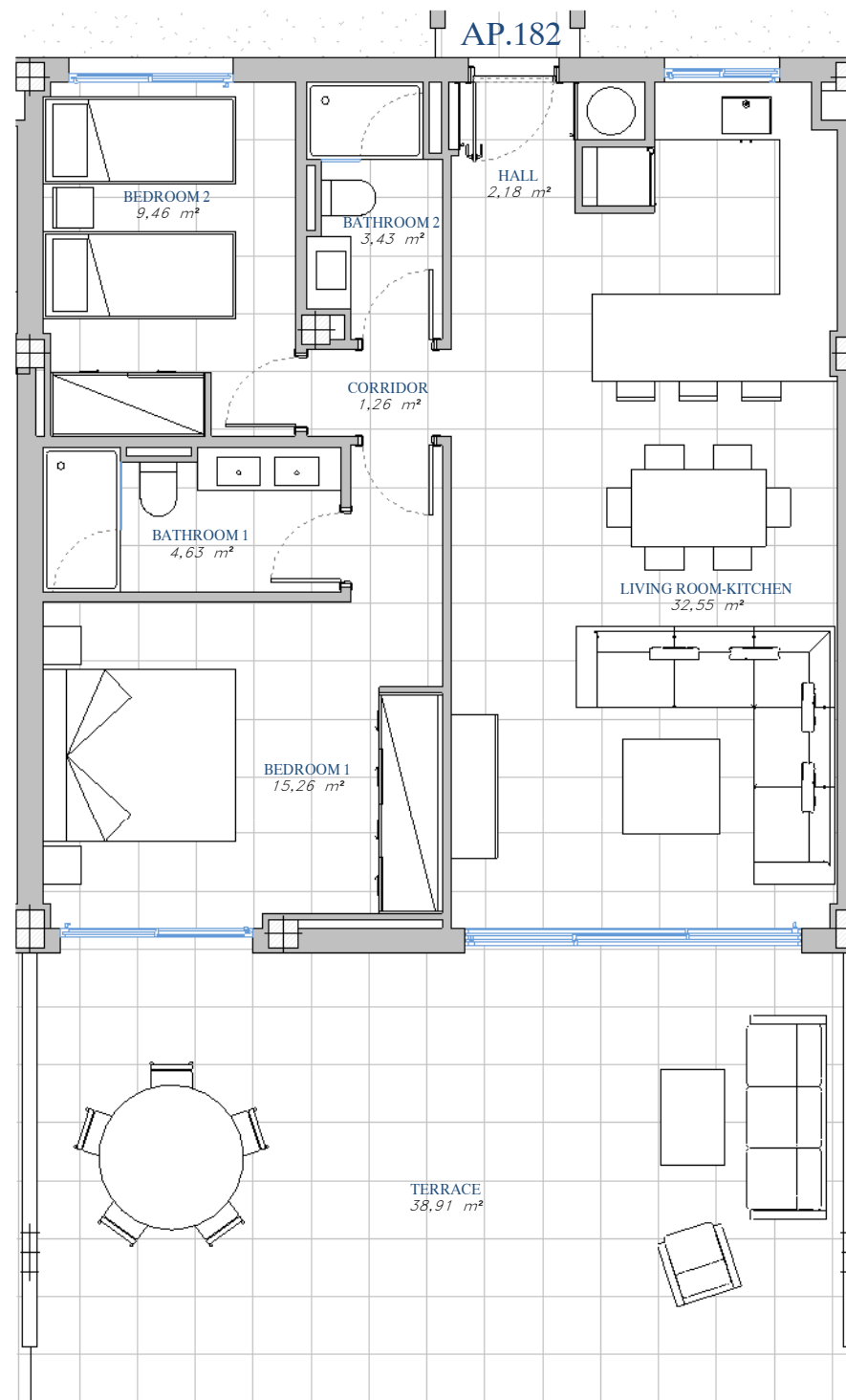


PORTAL 10
 AP.N°182
 GROUND_FLOOR



SITE PLAN



ACCORDING TO DECRETO 218/2005

Useful Area	75,65 m ²
Built Area	101,84 m ²

BUILT AREA

Living Area	79,05 m ²
Terrace Area	39,53 m ²
TOTAL BUILT AREA:	118,58 m²

