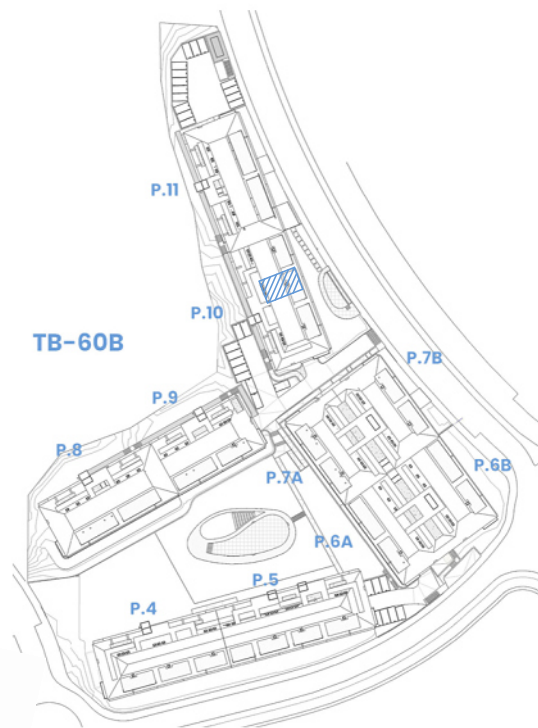
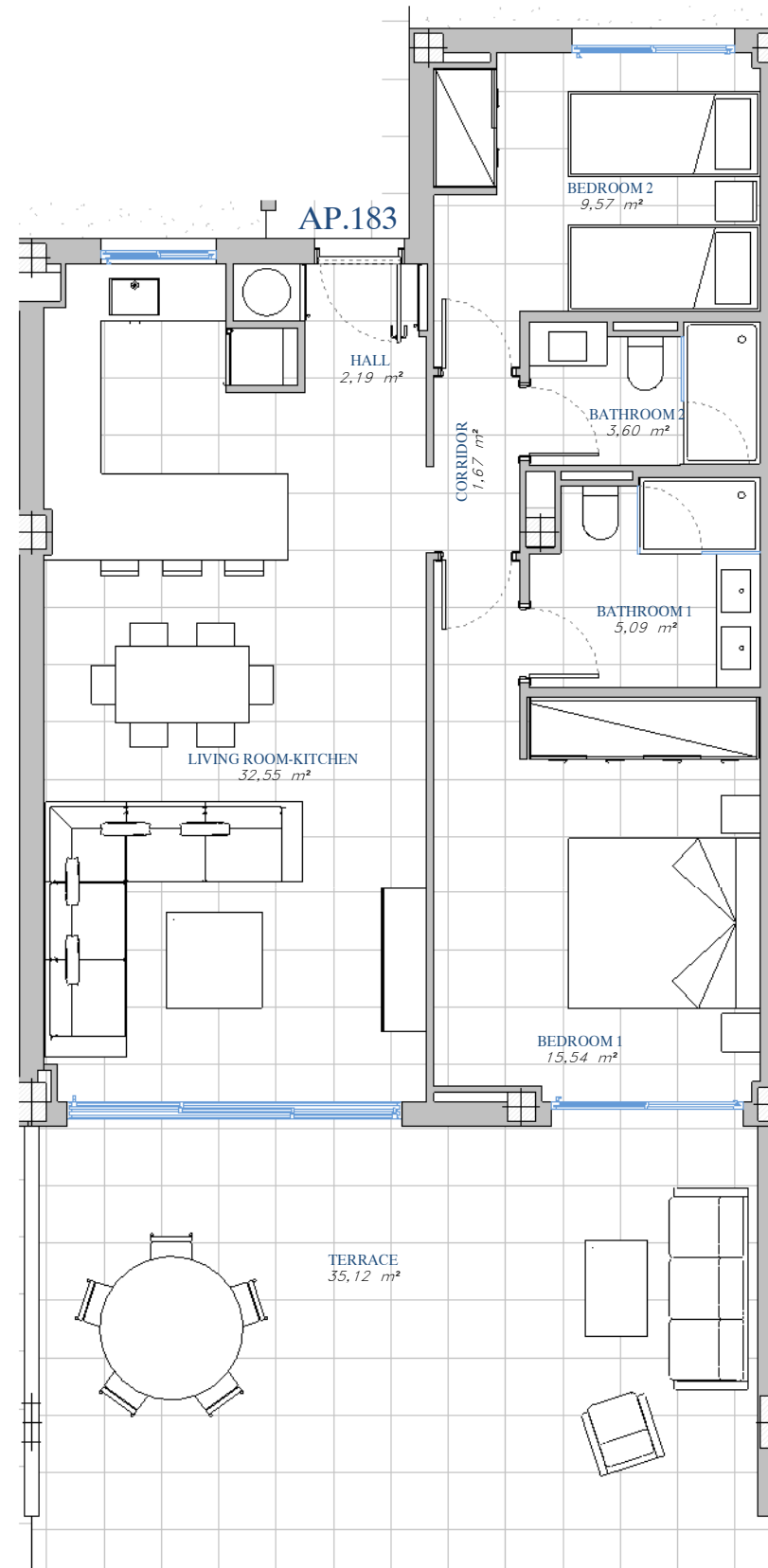


PORTAL 10  
 AP.N°183  
 GROUND\_FLOOR



SITE PLAN



ACCORDING TO DECRETO 218/2005

Useful Area	77,23 m <sup>2</sup>
Built Area	103,64 m <sup>2</sup>

BUILT AREA

Living Area	80,43 m <sup>2</sup>
Terrace Area	36,04 m <sup>2</sup>
TOTAL BUILT AREA:	116,47 m <sup>2</sup>

