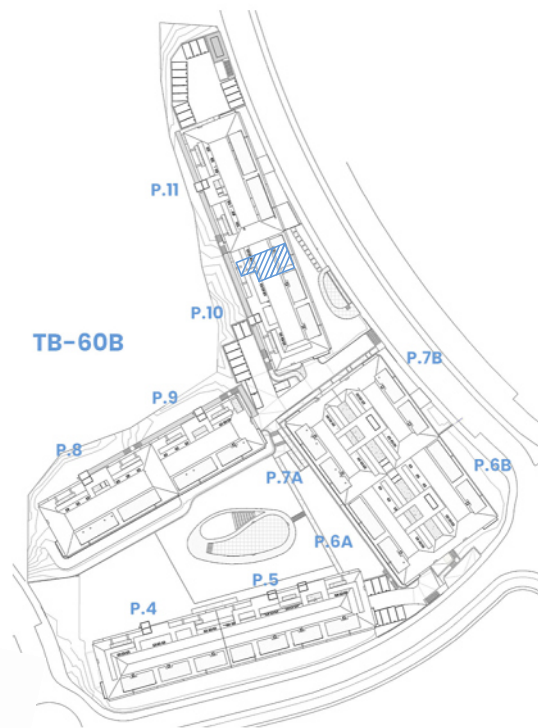
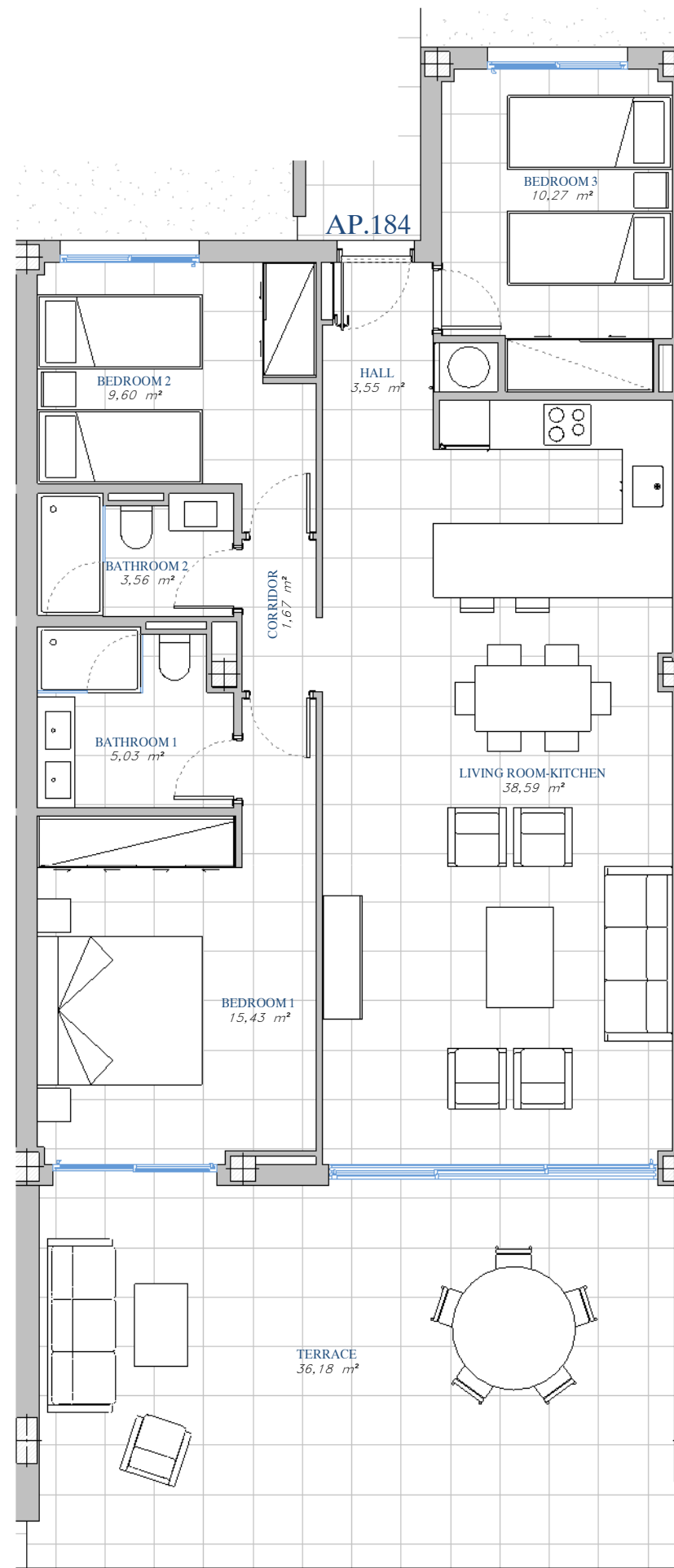


PORTAL 10  
 AP.N°184  
 GROUND\_FLOOR



SITE PLAN



ACCORDING TO DECRETO 218/2005

Useful Area	96,47 m <sup>2</sup>
Built Area	128,83 m <sup>2</sup>

BUILT AREA

Living Area	99,94 m <sup>2</sup>
Terrace Area	37,33 m <sup>2</sup>
<b>TOTAL BUILT AREA:</b>	<b>137,27 m<sup>2</sup></b>

