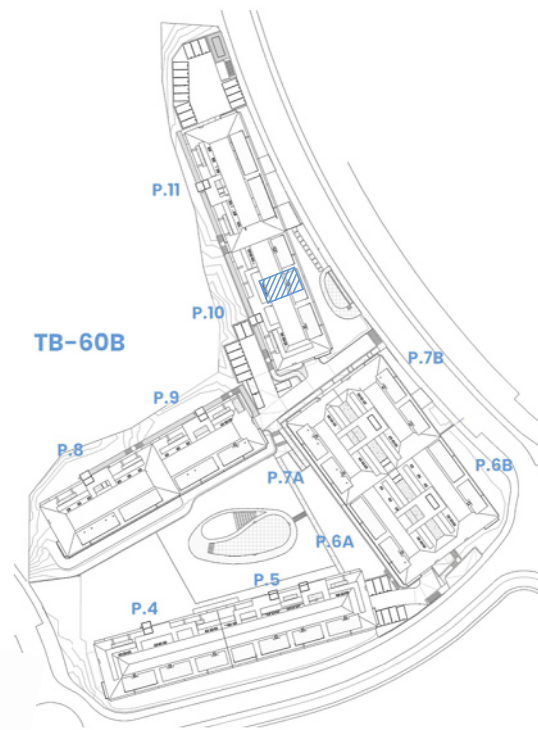
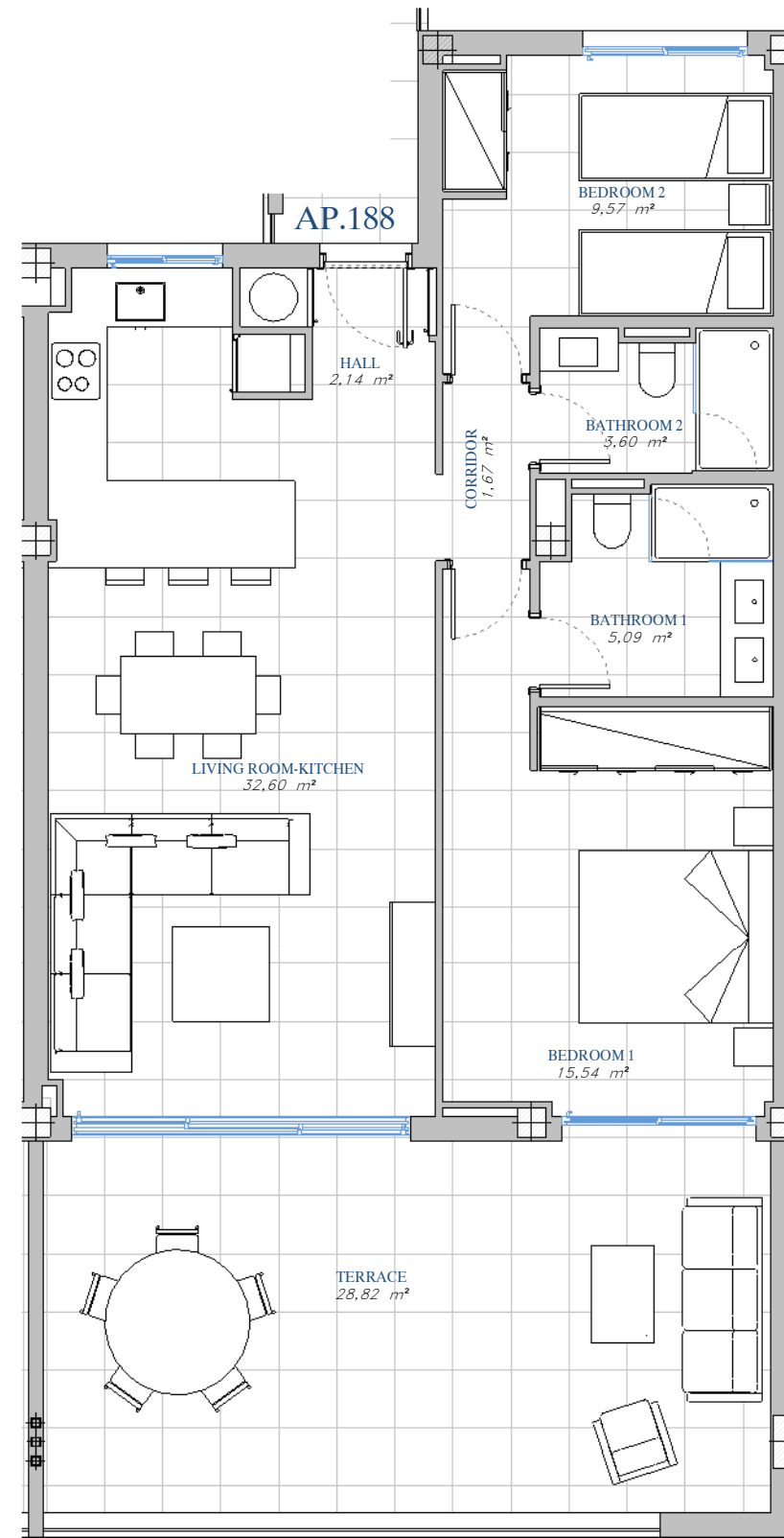


PORTAL 10
 AP.N°188
 FIRST_FLOOR



SITE PLAN

ACCORDING TO DECRETO 218/2005

Useful Area	77,23 m ²
Built Area	103,64 m ²

BUILT AREA

Living Area	80,43 m ²
Terrace Area	31,85 m ²
TOTAL BUILT AREA:	112,28 m²

