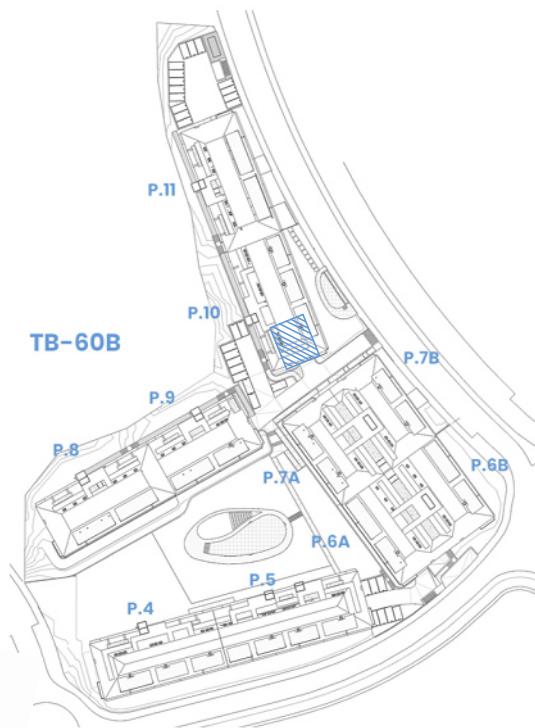
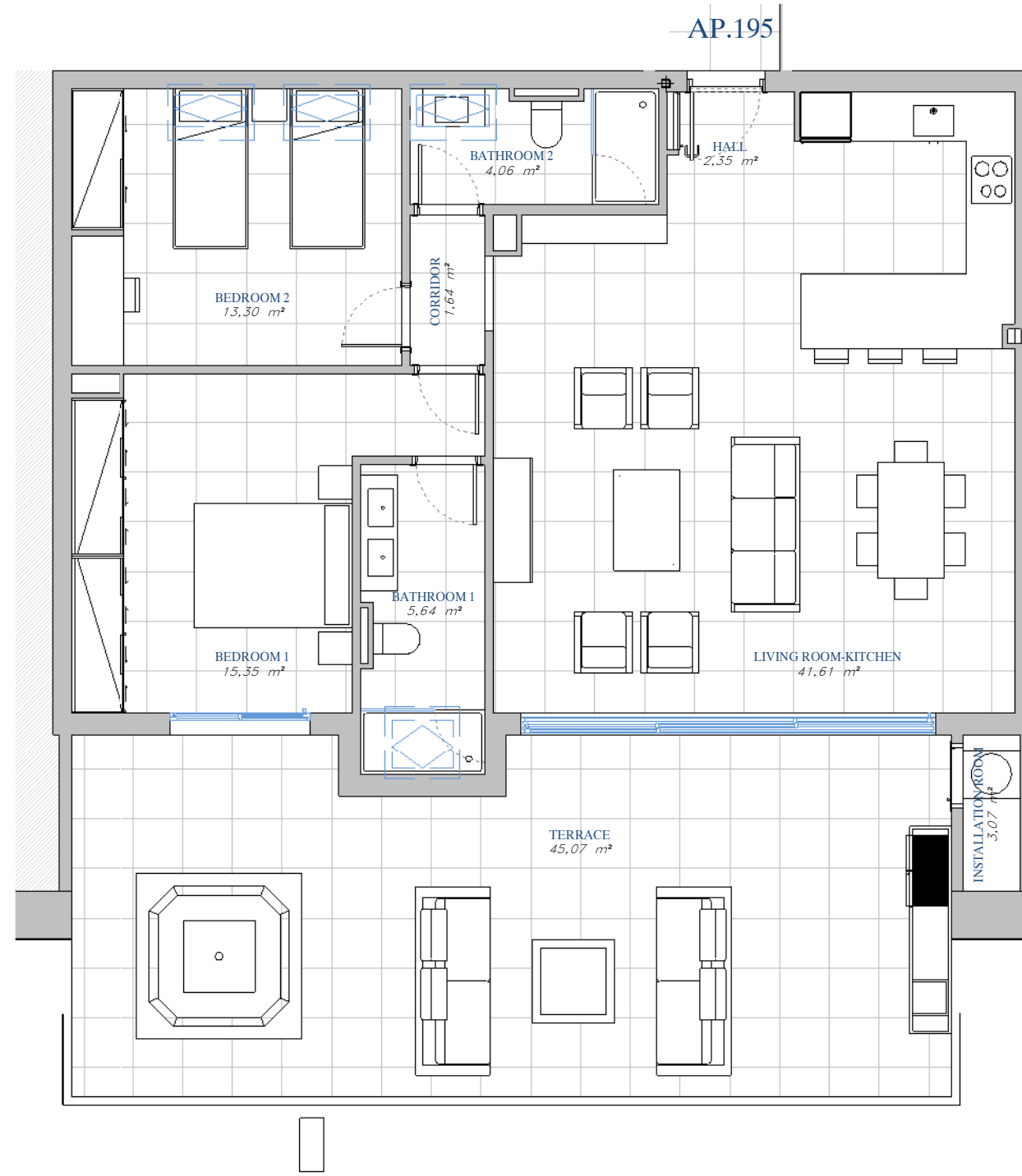


PORTAL 10  
AP.N°195 ATTIC



SITE PLAN



ACCORDING TO DECRETO 218/2005

Useful Area	95,72 m <sup>2</sup>
Built Area	123,05 m <sup>2</sup>

BUILT AREA

Living Area	95,19 m <sup>2</sup>
Terrace Area	50,90 m <sup>2</sup>
TOTAL BUILT AREA:	146,09 m <sup>2</sup>

