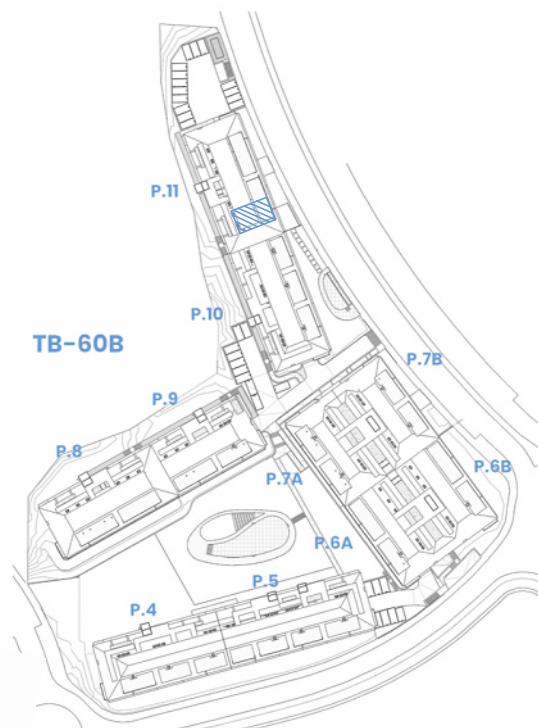
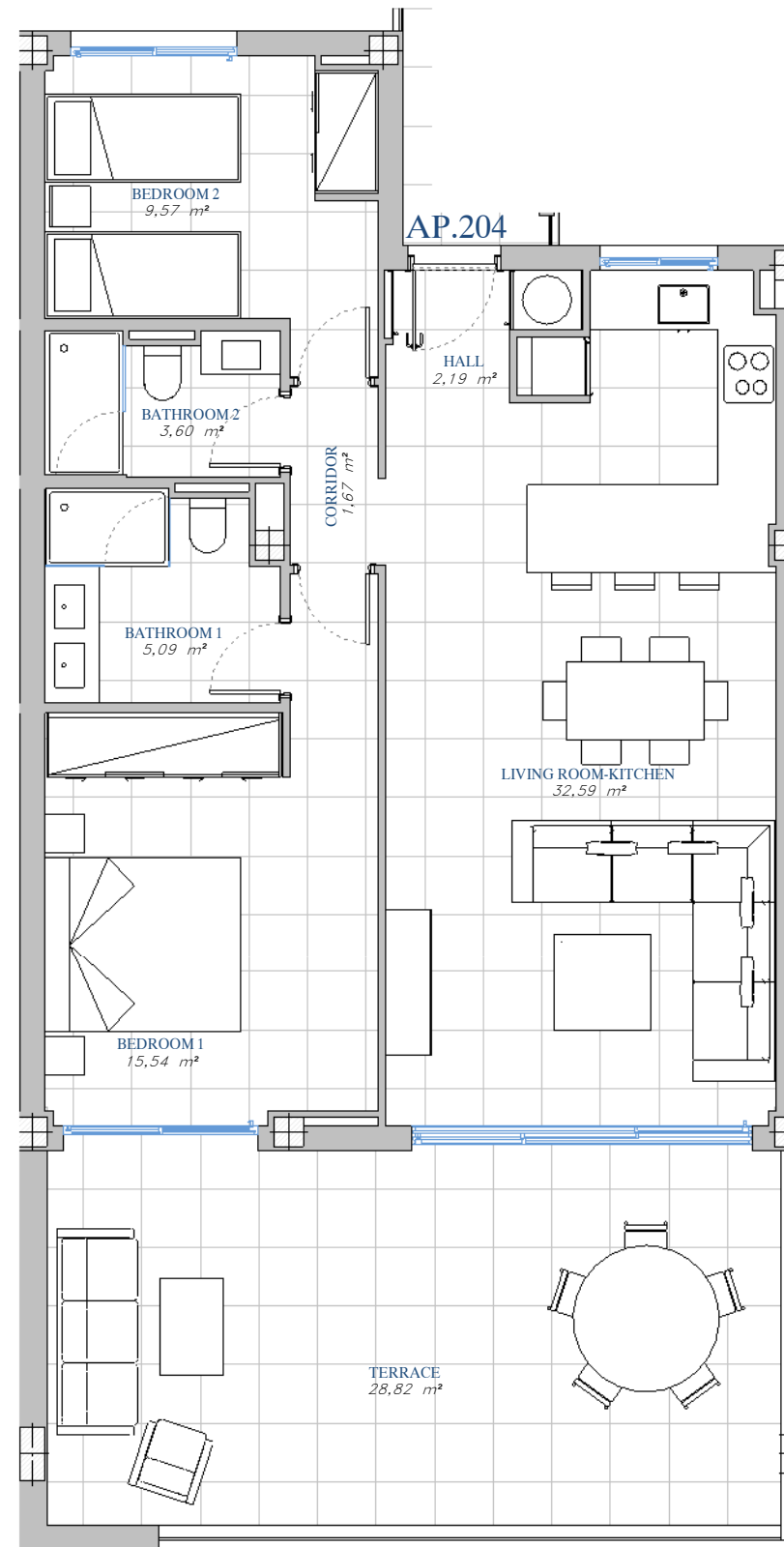


PORTAL 11  
 AP.N°204  
 FIRST\_FLOOR



SITE PLAN



ACCORDING TO DECRETO 218/2005

Useful Area	77,28 m <sup>2</sup>
Built Area	103,64 m <sup>2</sup>

BUILT AREA

Living Area	80,43 m <sup>2</sup>
Terrace Area	31,85 m <sup>2</sup>
<b>TOTAL BUILT AREA:</b>	<b>112,28 m<sup>2</sup></b>

