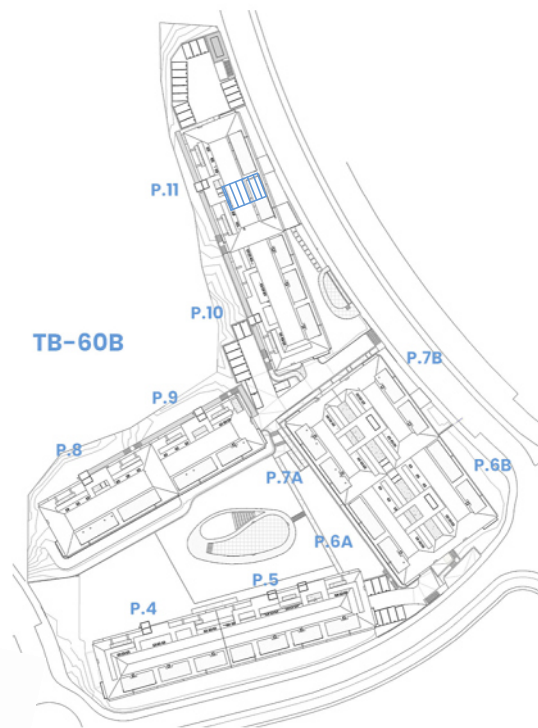
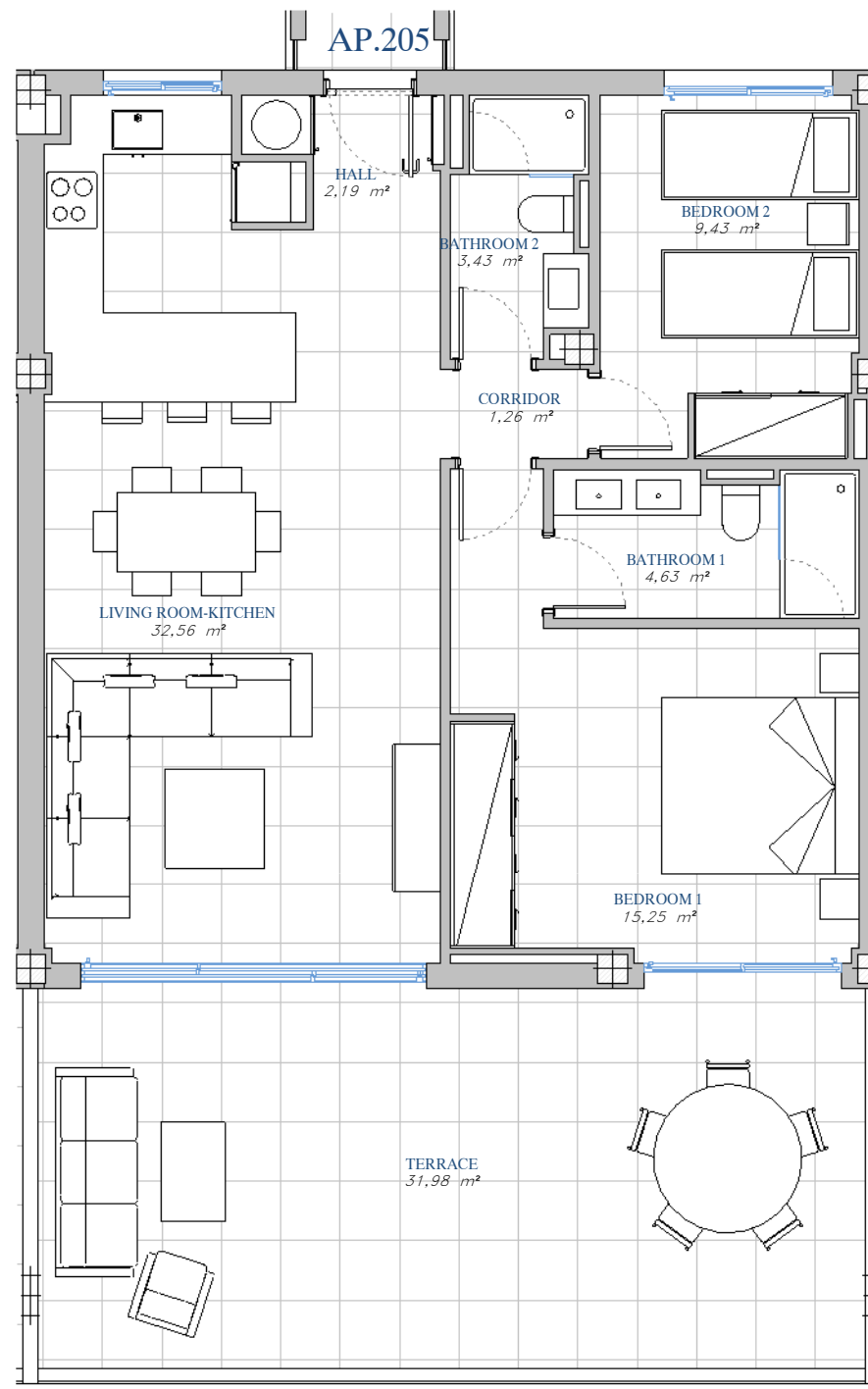


PORTAL 11
 AP.N°205
 FIRST_FLOOR



SITE PLAN



ACCORDING TO DECRETO 218/2005

Useful Area	75,63 m ²
Built Area	101,84 m ²

BUILT AREA

Living Area	79,05 m ²
Terrace Area	34,85 m ²
TOTAL BUILT AREA:	113,90 m ²

