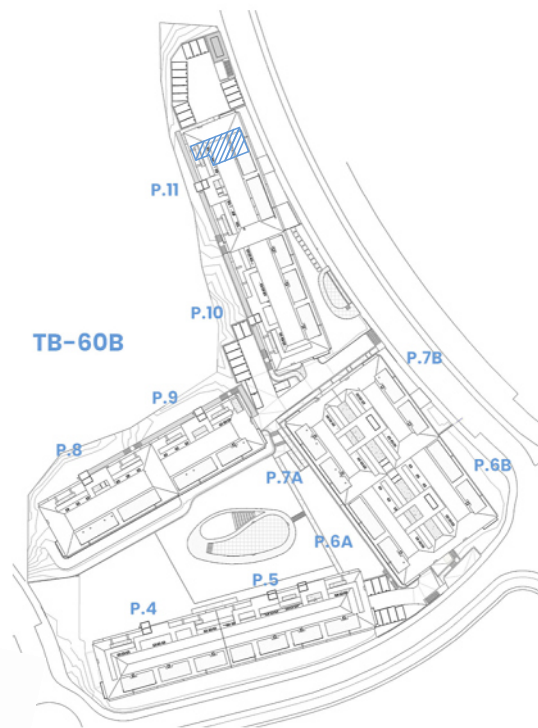
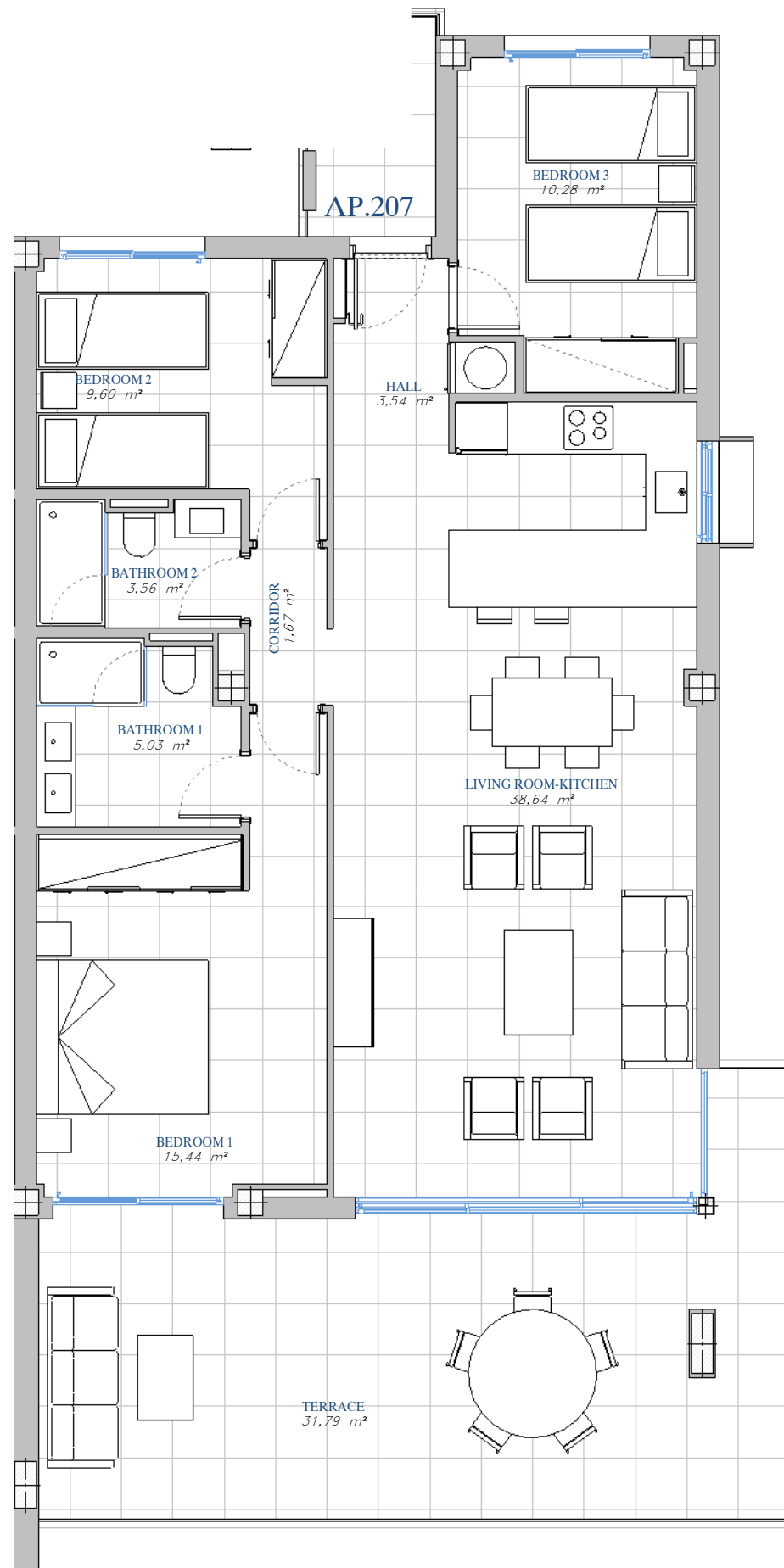


PORTAL 11
 AP.N°207
 FIRST_FLOOR



SITE PLAN



ACCORDING TO DECRETO 218/2005

Useful Area	96,54 m ²
Built Area	130,03 m ²

BUILT AREA

Living Area	100,94 m ²
Terrace Area	34,07 m ²
TOTAL BUILT AREA:	135,01 m ²

