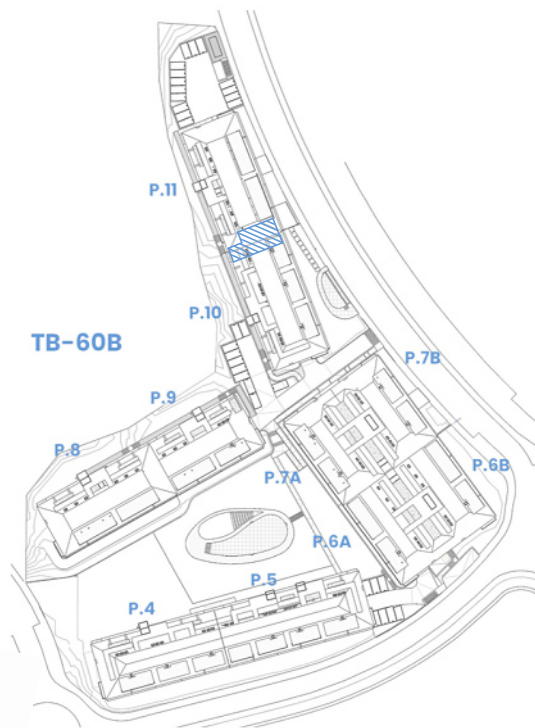
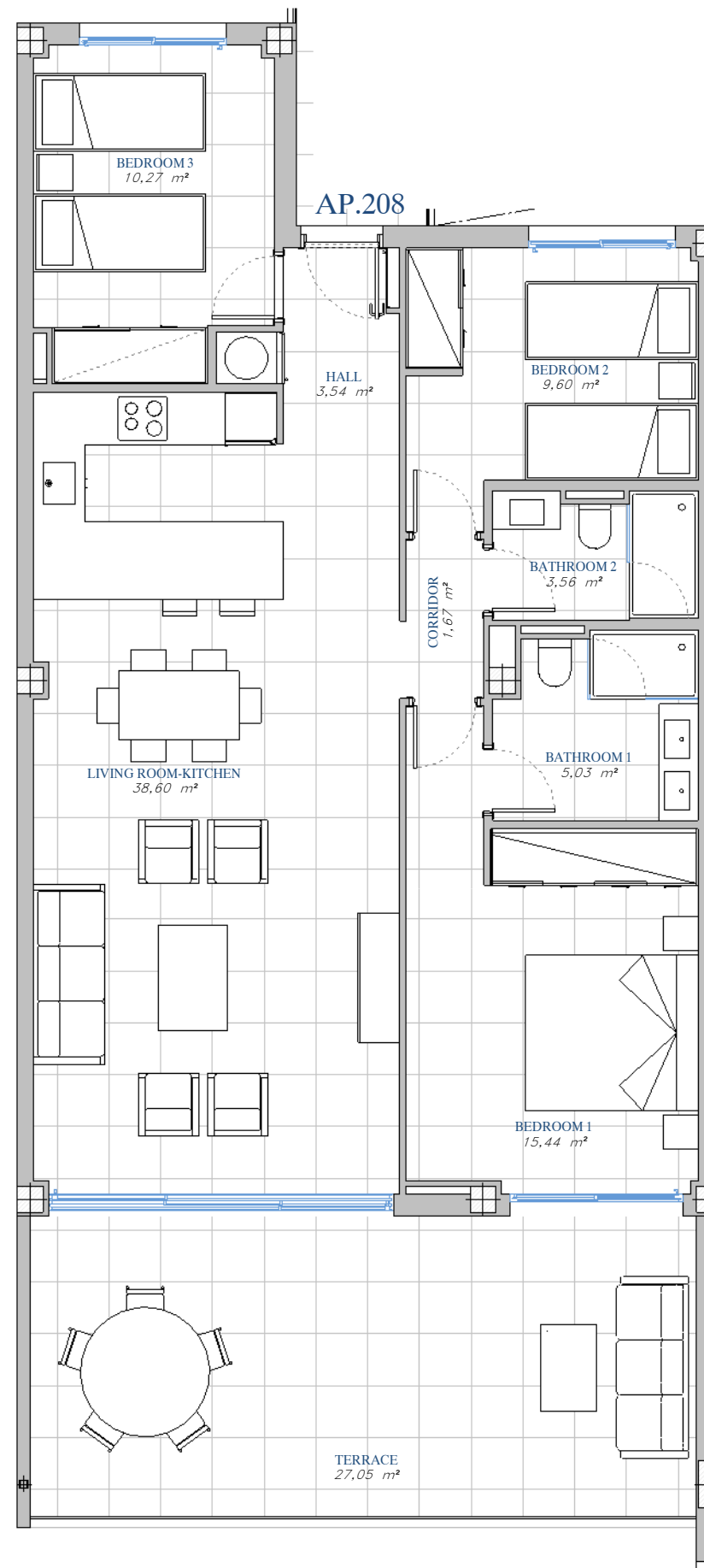


PORTAL 11
 AP.N°208
 SECOND_FLOOR



SITE PLAN



ACCORDING TO DECRETO 218/2005

Useful Area	96,48 m ²
Built Area	128,83 m ²

BUILT AREA

Living Area	99,94 m ²
Terrace Area	28,90 m ²
TOTAL BUILT AREA:	128,84 m²

