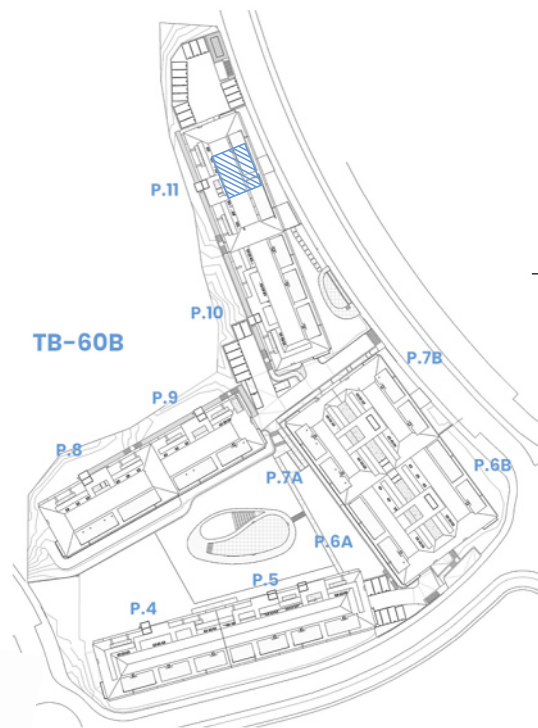
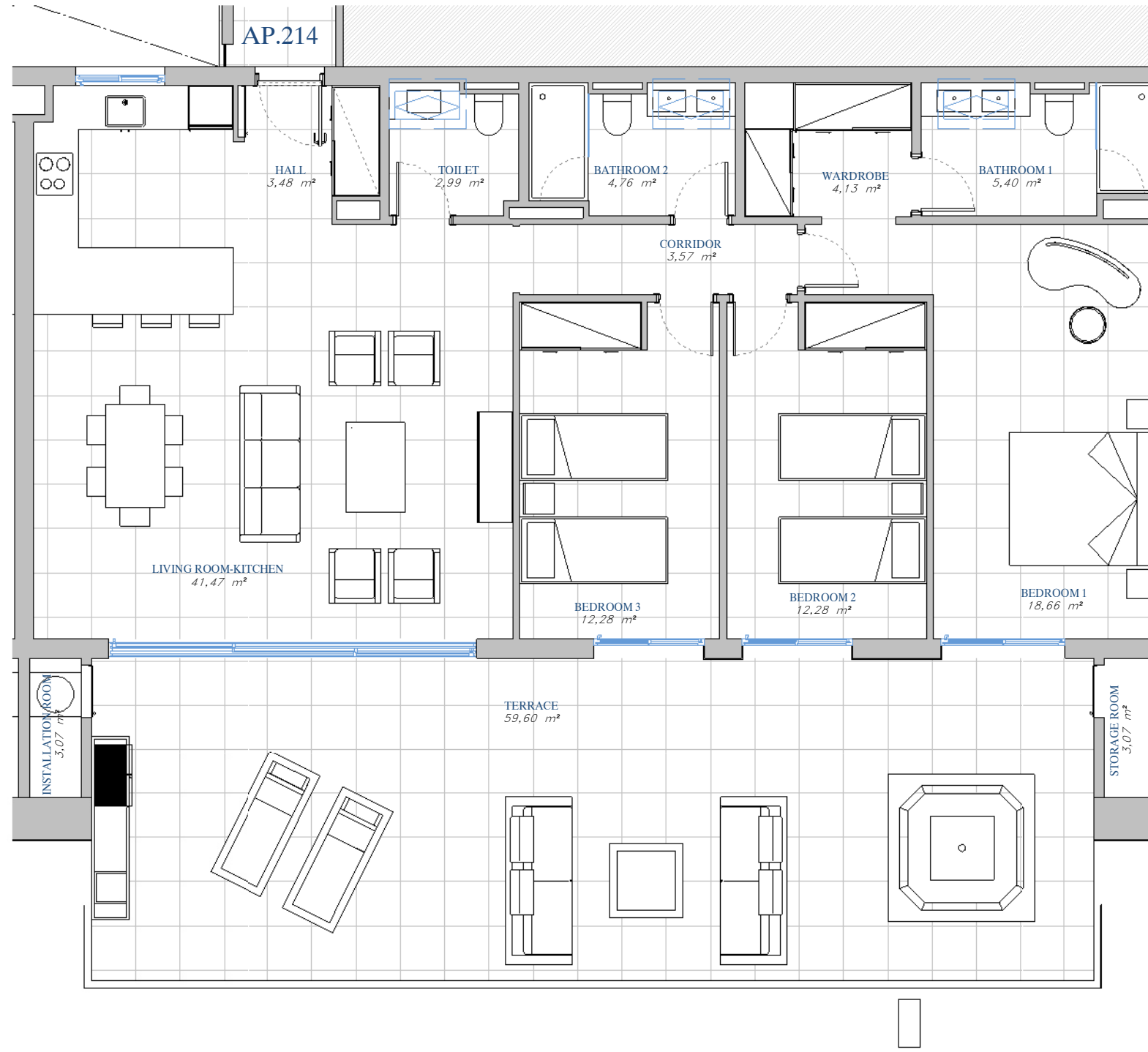


PORTAL 11
AP.N°214 ATTIC



SITE PLAN

ACCORDING TO DECRETO 218/2005

Useful Area	126,68 m ²
Built Area	160,76 m ²

BUILT AREA

Living Area	124,24 m ²
Terrace Area	69,54 m ²
TOTAL BUILT AREA:	193,79 m²

