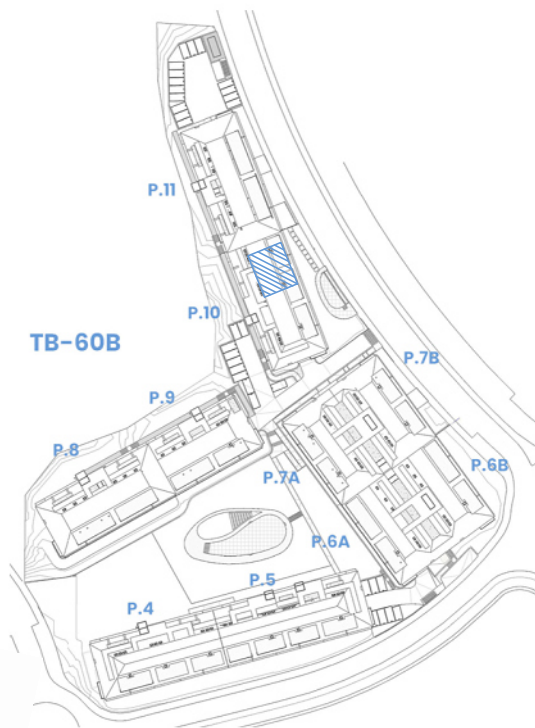
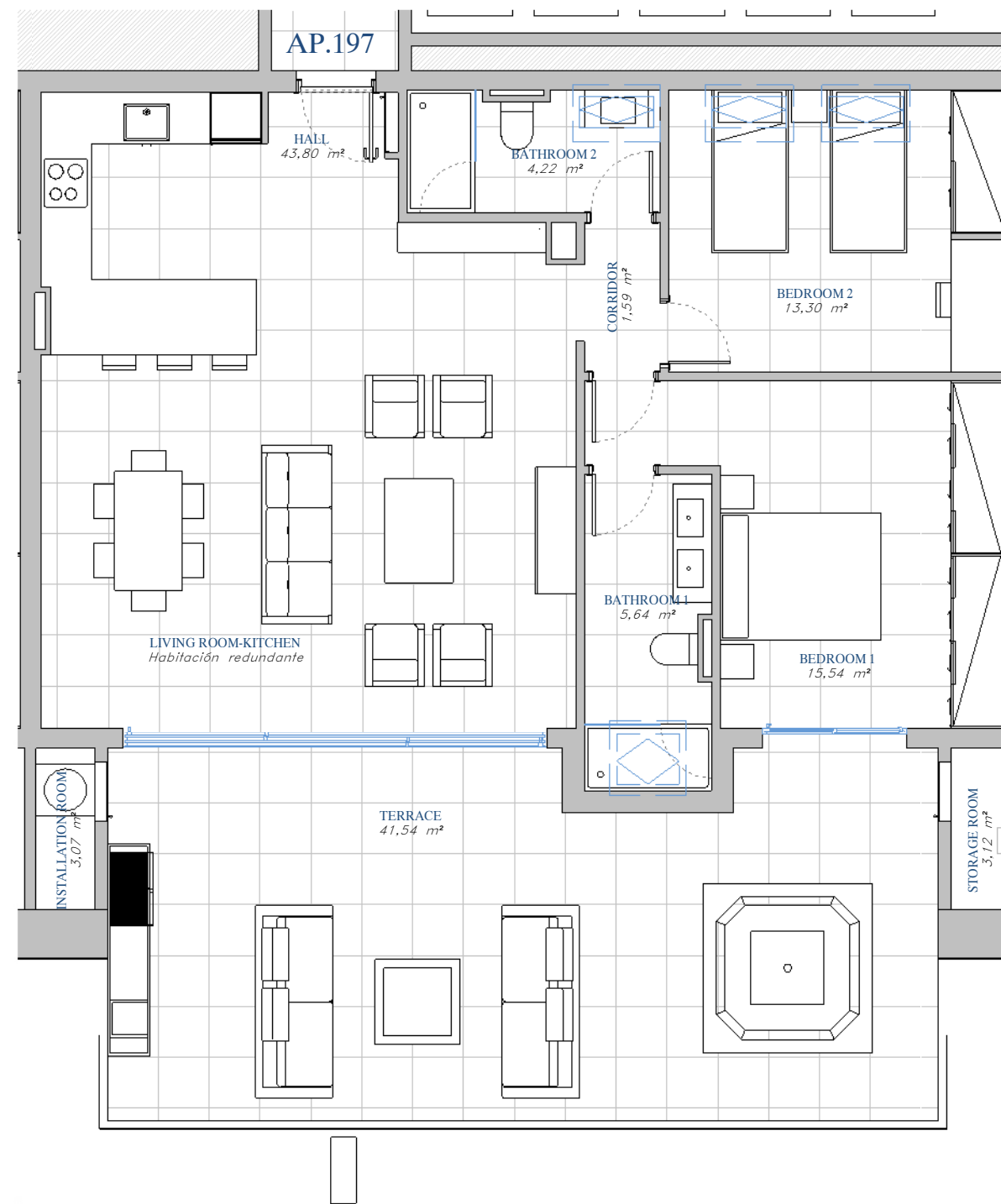


PORTAL 10  
AP.Nº197 ATTIC



SITE PLAN



ACCORDING TO DECRETO 218/2005

Useful Area	99,31 m <sup>2</sup>
Built Area	124,24 m <sup>2</sup>

BUILT AREA

Living Area	95,91 m <sup>2</sup>
Terrace Area	51,31 m <sup>2</sup>
TOTAL BUILT AREA:	147,21 m <sup>2</sup>

