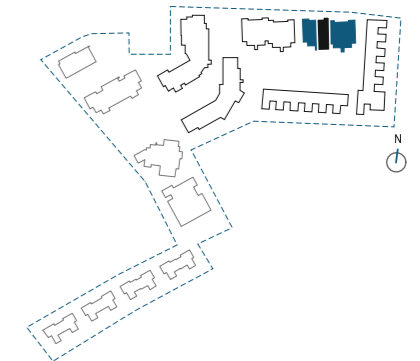
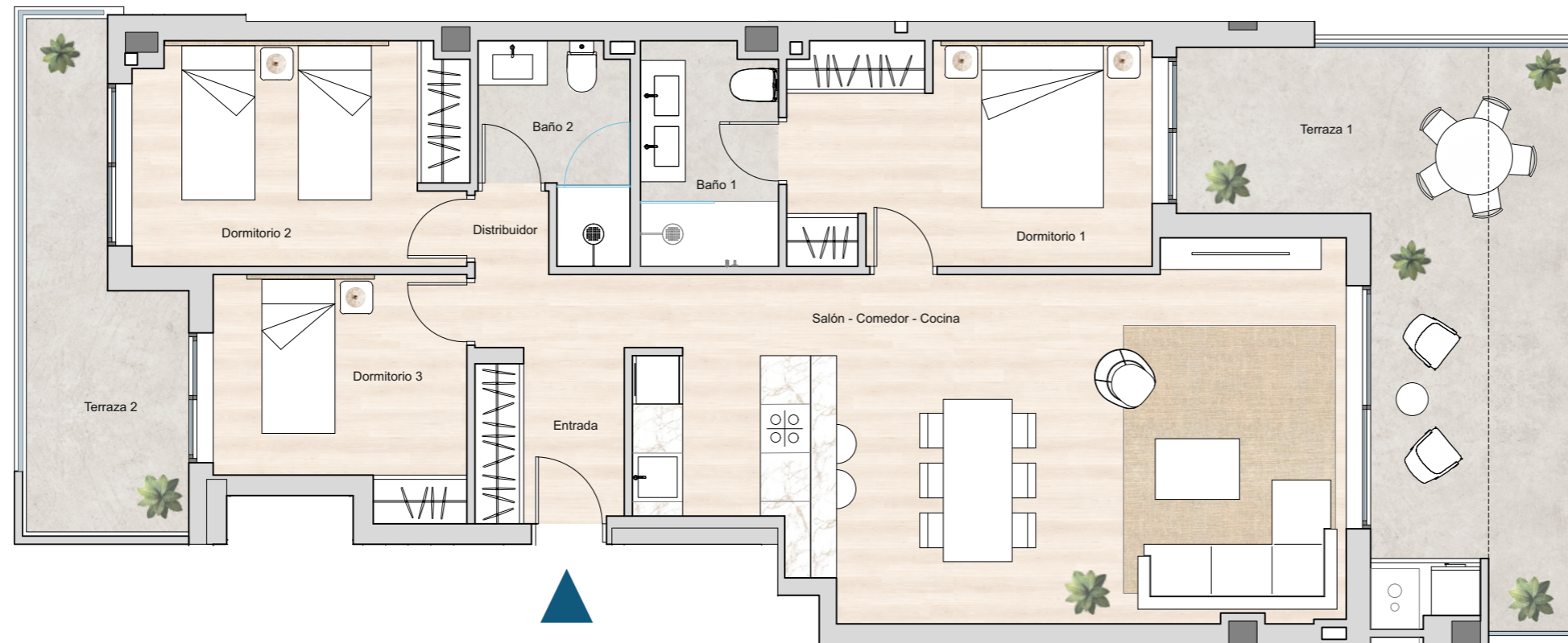


**R5 - BLOQUE C2**  
**VIVIENDA 91 - PLANTA PRIMERA**

3 DORMITORIOS  
 TERRAZA



| SUPERFICIES ÚTILES       |                            |
|--------------------------|----------------------------|
| ENTRADA                  | 3.98 m <sup>2</sup>        |
| SALÓN - COMEDOR - COCINA | 35.40 m <sup>2</sup>       |
| DISTRIBUIDOR             | 3.36 m <sup>2</sup>        |
| DORMITORIO 1             | 12.40 m <sup>2</sup>       |
| BAÑO 1                   | 4.65 m <sup>2</sup>        |
| DORMITORIO 2             | 11.26 m <sup>2</sup>       |
| BAÑO 2                   | 4.17 m <sup>2</sup>        |
| DORMITORIO 3             | 8.45 m <sup>2</sup>        |
| LAVADERO                 | 1.05 m <sup>2</sup>        |
| <b>TOTAL SUP. ÚTIL</b>   | <b>84.72 m<sup>2</sup></b> |

|                                 |                            |
|---------------------------------|----------------------------|
| TERRAZA 1                       | 21.24 m <sup>2</sup>       |
| TERRAZA 2                       | 9.30 m <sup>2</sup>        |
| <b>TOTAL SUP. ÚTIL EXTERIOR</b> | <b>30.54 m<sup>2</sup></b> |

| SUPERFICIES CONSTRUIDAS      |                             |
|------------------------------|-----------------------------|
| VIVIENDA                     | 97.53 m <sup>2</sup>        |
| TERRAZA 1                    | 22.60 m <sup>2</sup>        |
| TERRAZA 2                    | 10.75 m <sup>2</sup>        |
| <b>TOTAL SUP. CONSTRUIDA</b> | <b>130.88 m<sup>2</sup></b> |



PROYECTO DE 118 VIVIENDAS,  
 TRASTEROS, GARAJE Y PISCINAS

