

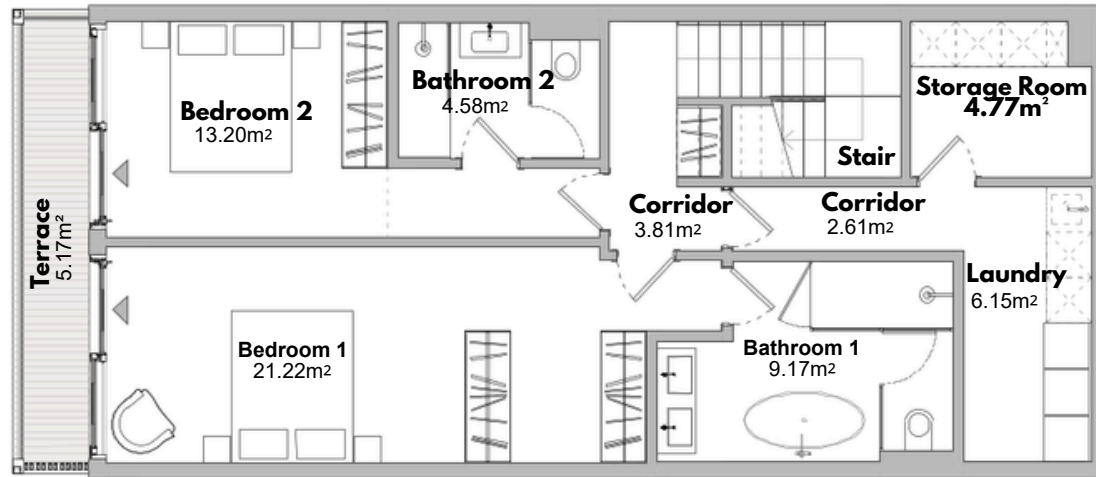
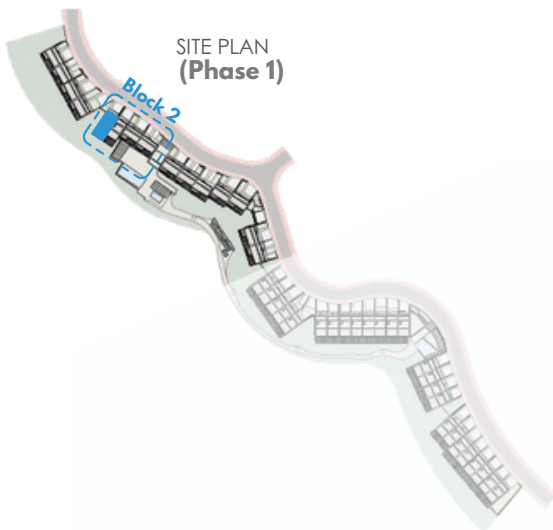
RESIDENCE 05

BLOCK 2 TYPE 1

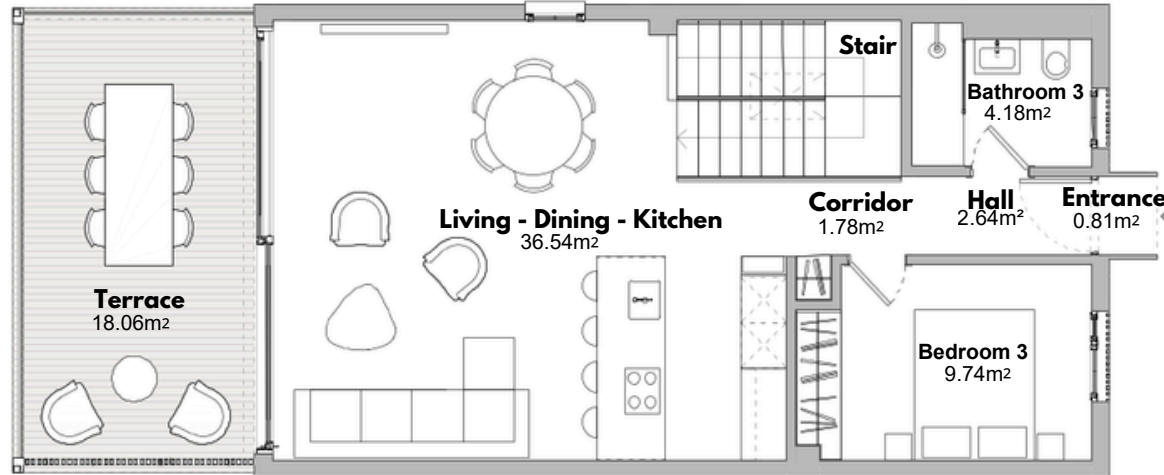
BUILT AREA	
Living Area	155,42m ²
Terrace Area	26,50m ²
Garden & Parking	60,35m ²
Total Built Area:	242,27m ²

ACCORDING TO D. 218/2005

Useful Area	145,02m ²
Built Area	182,18m ²



GROUND FLOOR PLAN (Lower Level)



FIRST FLOOR PLAN (Entrance Level)



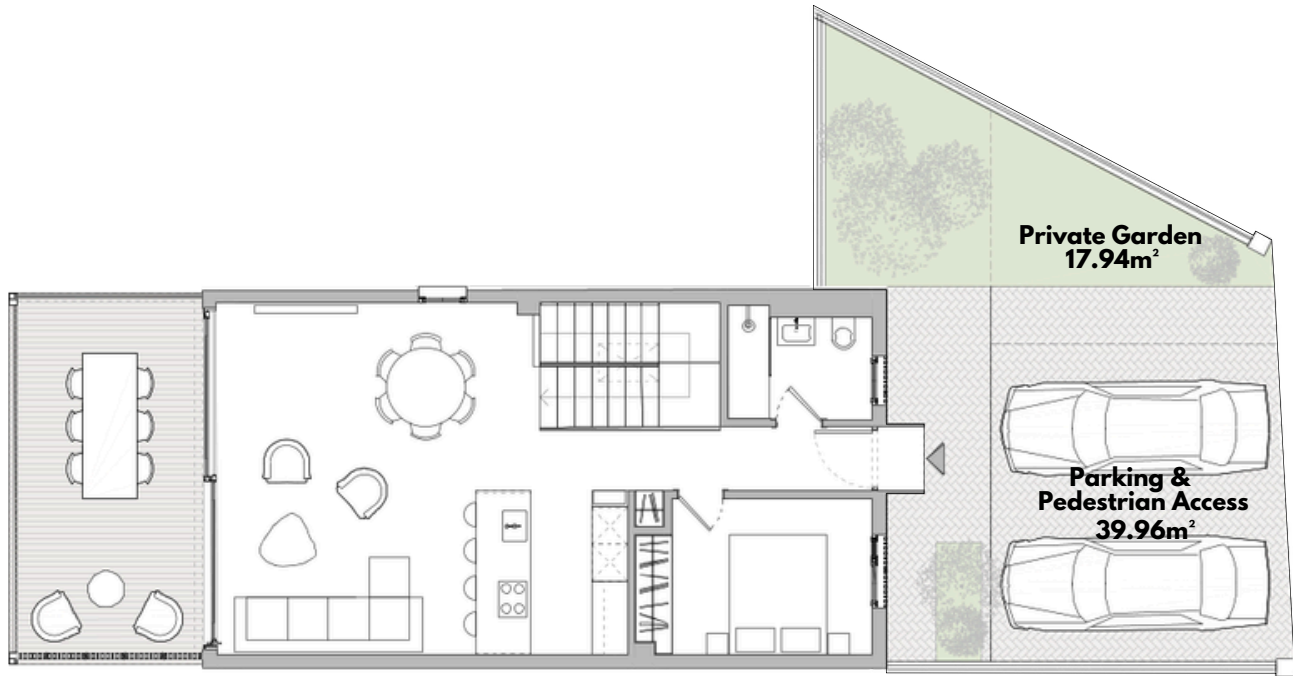
Scale Bar (metres)



RESIDENCE 05

BLOCK 2 TYPE 1

BUILT AREA	
Living Area	155,42m ²
Terrace Area	26,50m ²
Garden & Parking	60,35m ²
Total Built Area:	242,27m ²
ACCORDING TO D. 218/2005	
Useful Area	145,02m ²
Built Area	182,18m ²



HOUSE + ENTRANCE + PARKING
(Entrance Level)

