

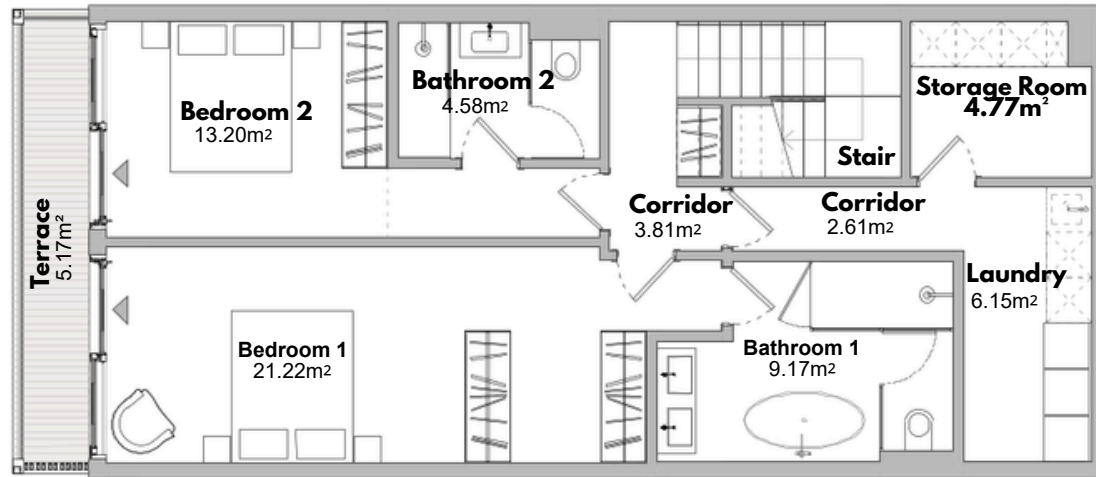
RESIDENCE 06

BLOCK 2 TYPE 1

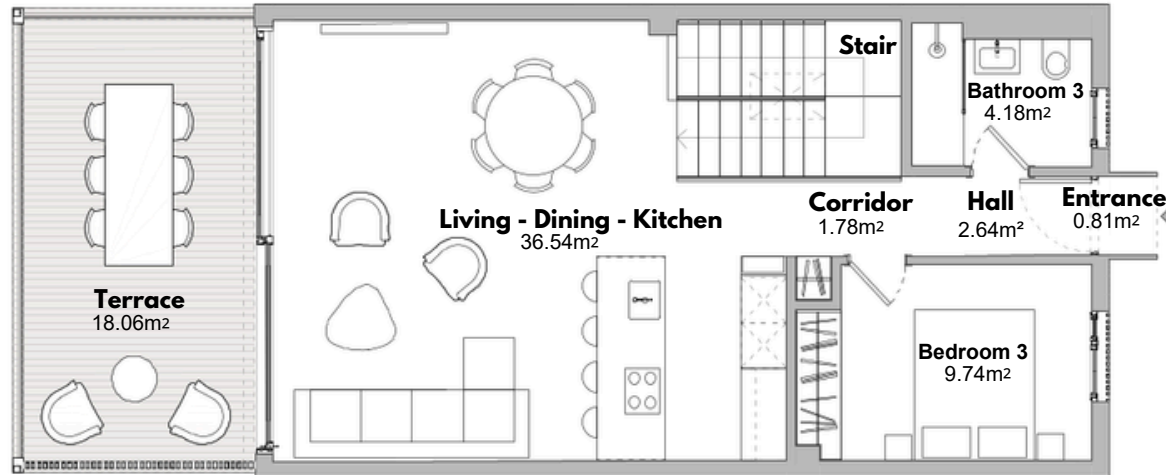
BUILT AREA	
Living Area	155,42m ²
Terrace Area	26,50m ²
Garden & Parking	42,17m ²
Total Built Area:	224,09m ²

ACCORDING TO D. 218/2005

Useful Area	145,02m ²
Built Area	180,48m ²



**GROUND FLOOR PLAN
(Lower Level)**



**FIRST FLOOR PLAN
(Entrance Level)**



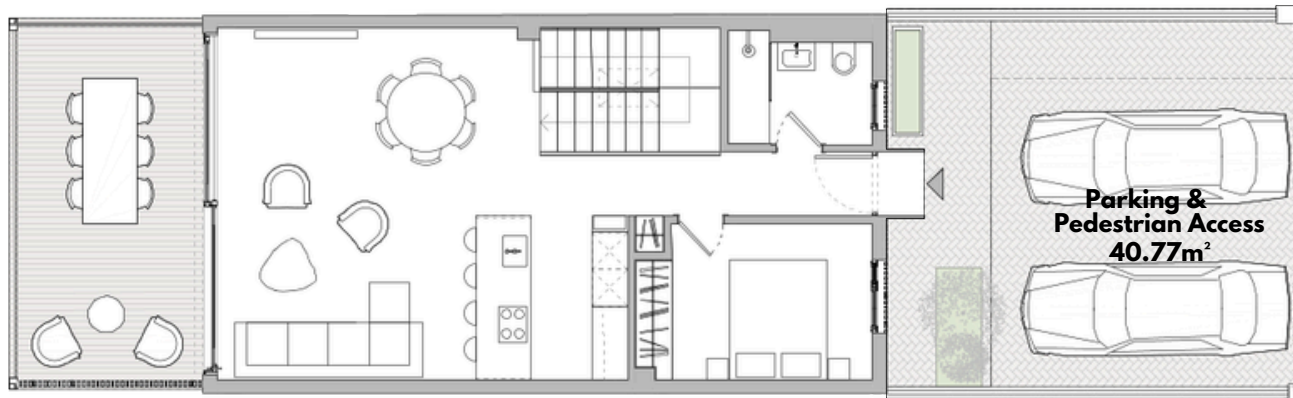
Scale Bar (metres)



RESIDENCE 06

BLOCK 2 TYPE 1

BUILT AREA	
Living Area	155,42m ²
Terrace Area	26,50m ²
Garden & Parking	42,17m ²
Total Built Area:	224,09m ²
ACCORDING TO D. 218/2005	
Useful Area	145,02m ²
Built Area	180,48m ²



HOUSE + ENTRANCE + PARKING
(Entrance Level)



Scale Bar (metres)

