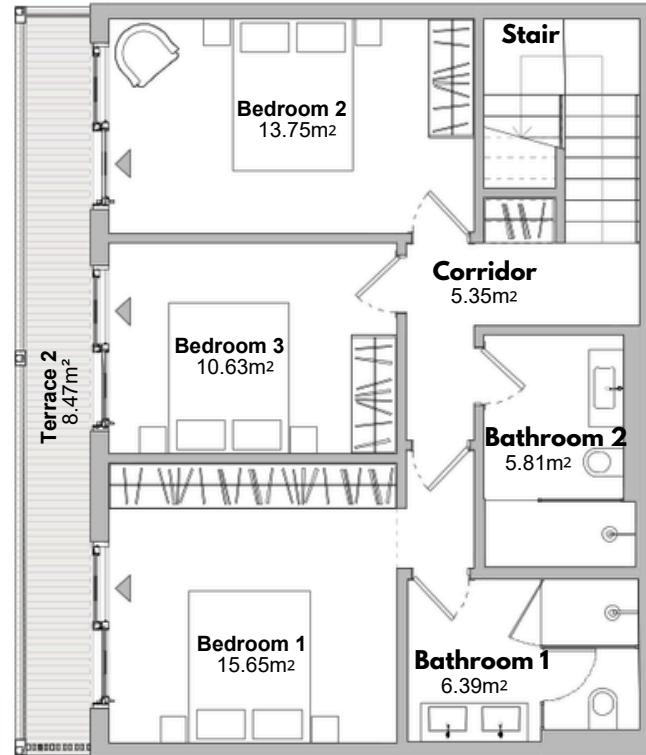
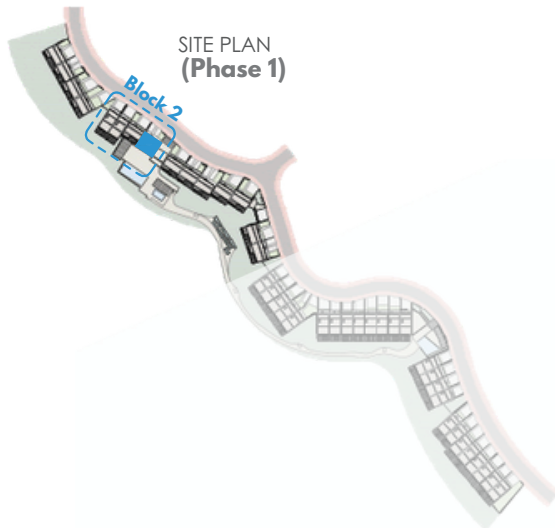


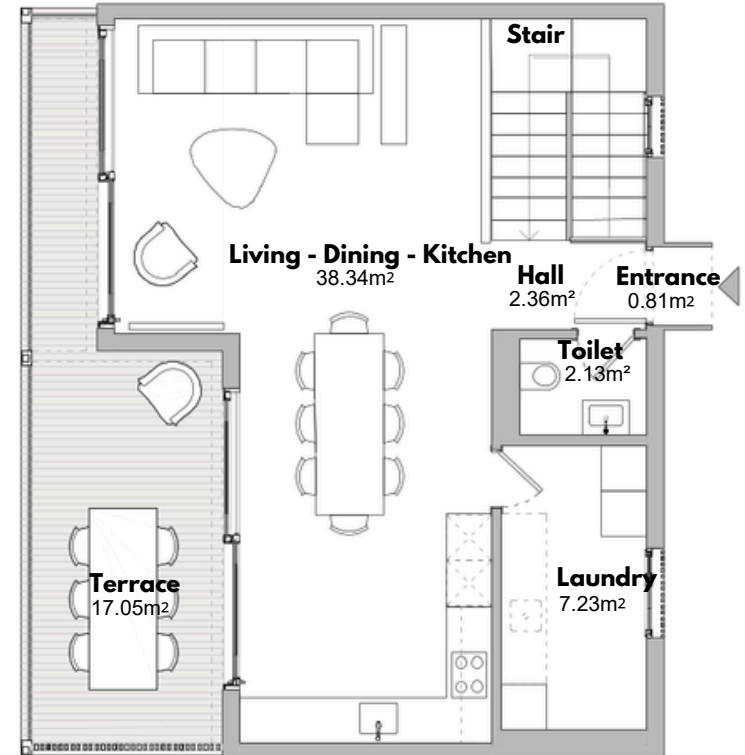
RESIDENCE 08

**BLOCK 2
TYPE 3**

BUILT AREA	
Living Area	141,52m ²
Terrace Area	29,30m ²
Garden & Parking	56,49m ²
Total Built Area:	227,31m ²
ACCORDING TO D. 218/2005	
Useful Area	131,01m ²
Built Area	166,85m ²



**GROUND FLOOR PLAN
(Lower Level)**



**FIRST FLOOR PLAN
(Entrance Level)**



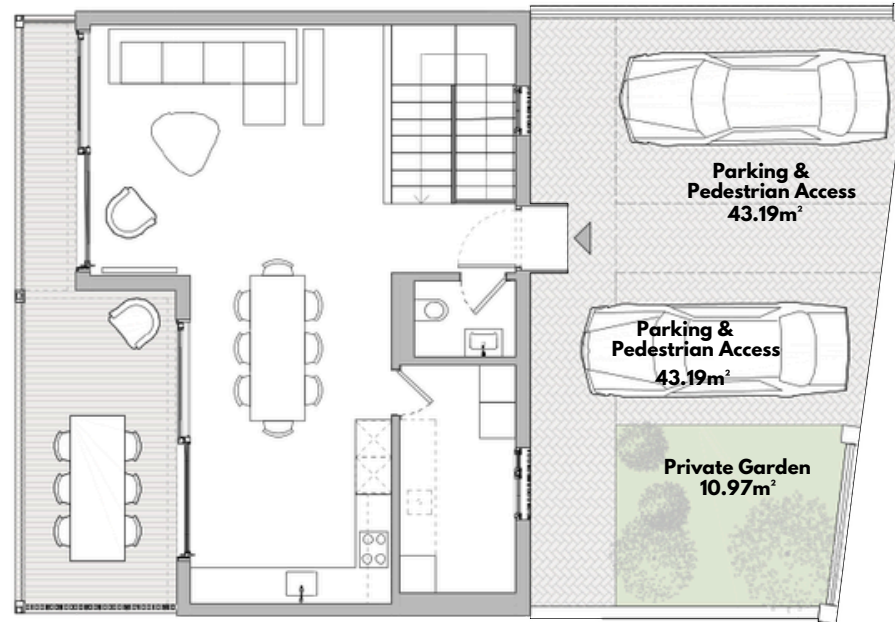
Scale Bar (metres)



RESIDENCE 08

**BLOCK 2
TYPE 3**

BUILT AREA	
Living Area	141,52m ²
Terrace Area	29,30m ²
Garden & Parking	56,49m ²
Total Built Area:	227,31m ²
ACCORDING TO D. 218/2005	
Useful Area	131,01m ²
Built Area	166,85m ²



**HOUSE + ENTRANCE + PARKING
(Entrance Level)**



Scale Bar (metres)

