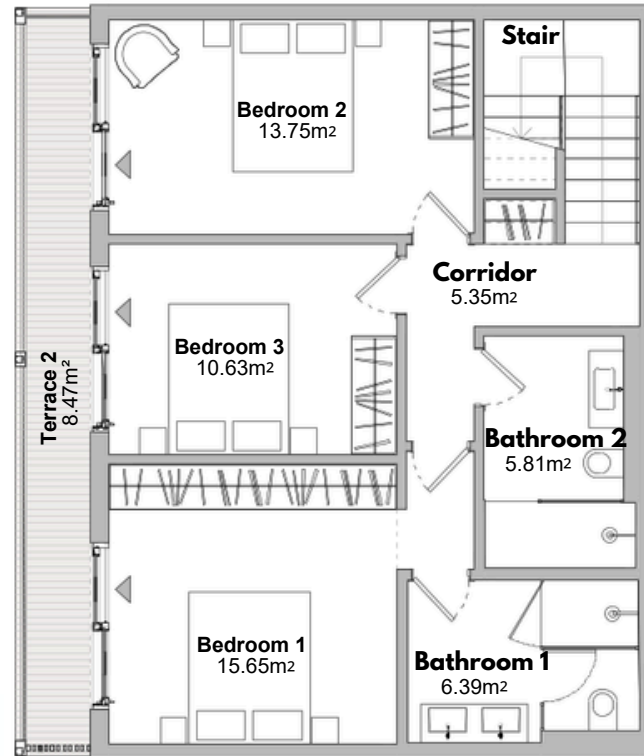
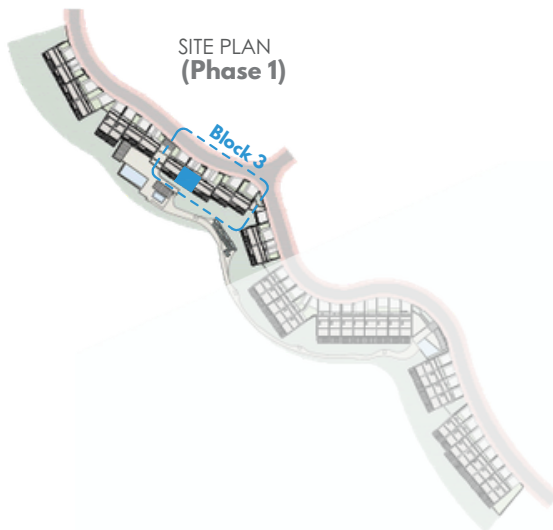


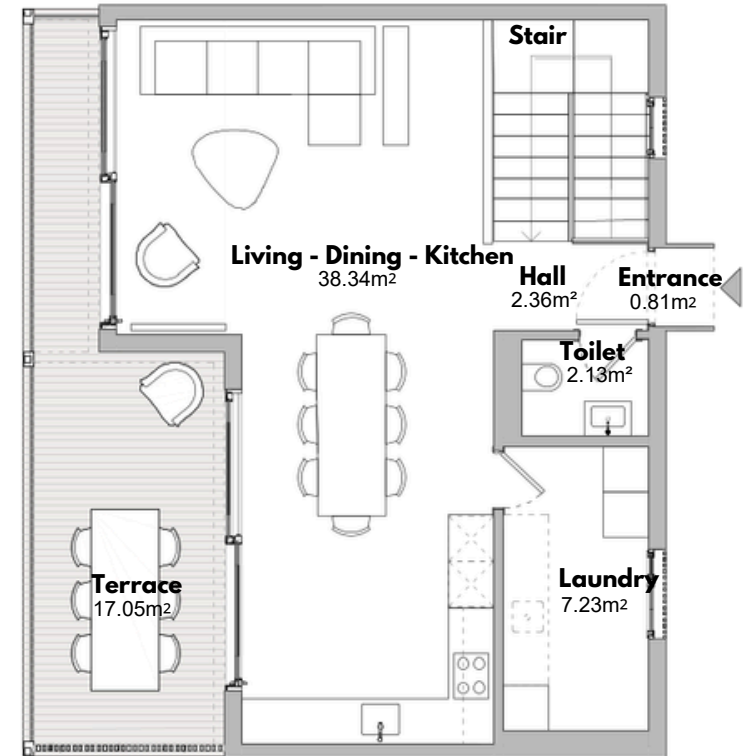
RESIDENCE 10

BLOCK 3 TYPE 3

BUILT AREA	
Living Area	141,52m ²
Terrace Area	29,30m ²
Garden & Parking	60,13m ²
Total Built Area:	230,95m ²
ACCORDING TO D. 218/2005	
Useful Area	131,01m ²
Built Area	166,57m ²



**GROUND FLOOR PLAN
(Lower Level)**



**FIRST FLOOR PLAN
(Entrance Level)**



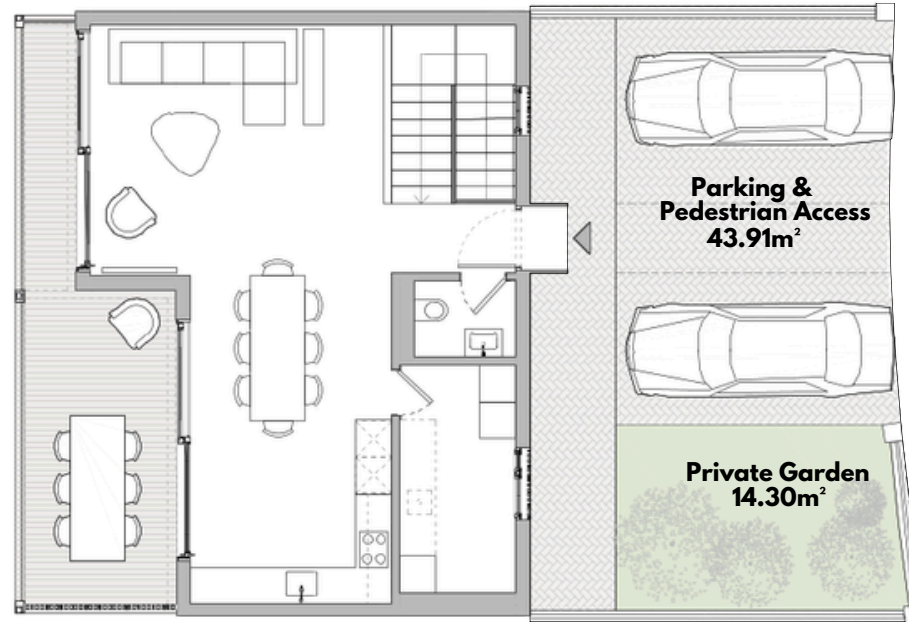
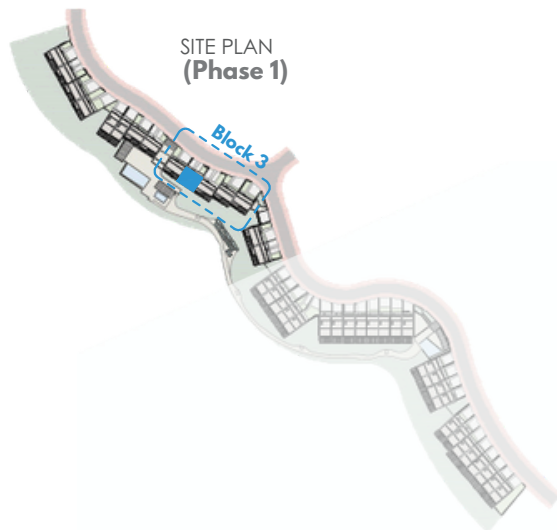
Scale Bar (metres)



RESIDENCE 10

BLOCK 3 TYPE 3

BUILT AREA	
Living Area	141,52m ²
Terrace Area	29,30m ²
Garden & Parking	60,13m ²
Total Built Area:	230,95m ²
ACCORDING TO D. 218/2005	
Useful Area	131,01m ²
Built Area	166,57m ²



HOUSE + ENTRANCE + PARKING
(Entrance Level)

