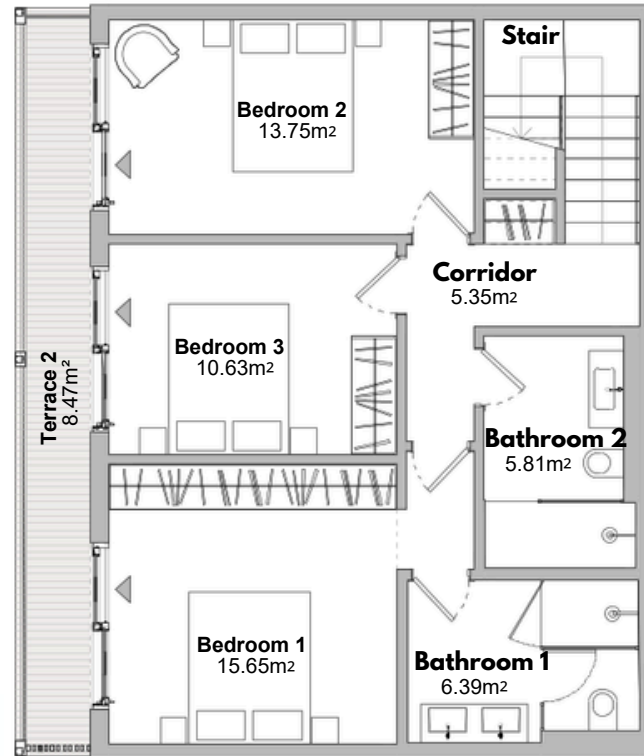
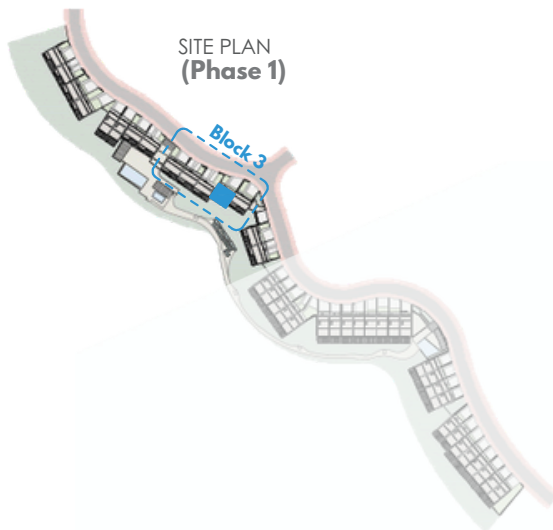


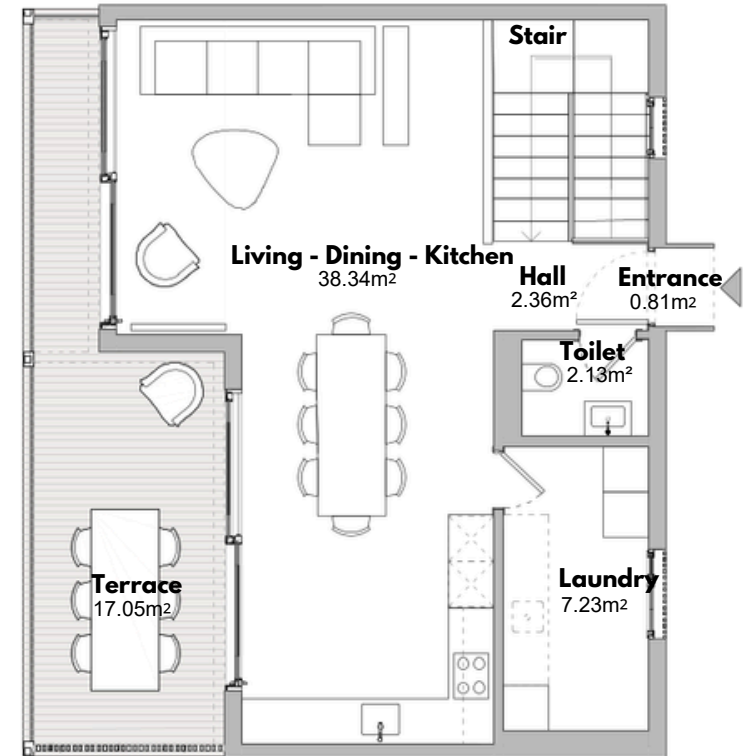
# RESIDENCE 12

## BLOCK 3 TYPE 3

|                                 |                      |
|---------------------------------|----------------------|
| <b>BUILT AREA</b>               |                      |
| Living Area                     | 141,52m <sup>2</sup> |
| Terrace Area                    | 29,30m <sup>2</sup>  |
| Garden & Parking                | 74,91m <sup>2</sup>  |
| Total Built Area:               | 245,73m <sup>2</sup> |
| <b>ACCORDING TO D. 218/2005</b> |                      |
| Useful Area                     | 131,01m <sup>2</sup> |
| Built Area                      | 167,21m <sup>2</sup> |



**GROUND FLOOR PLAN  
(Lower Level)**



**FIRST FLOOR PLAN  
(Entrance Level)**



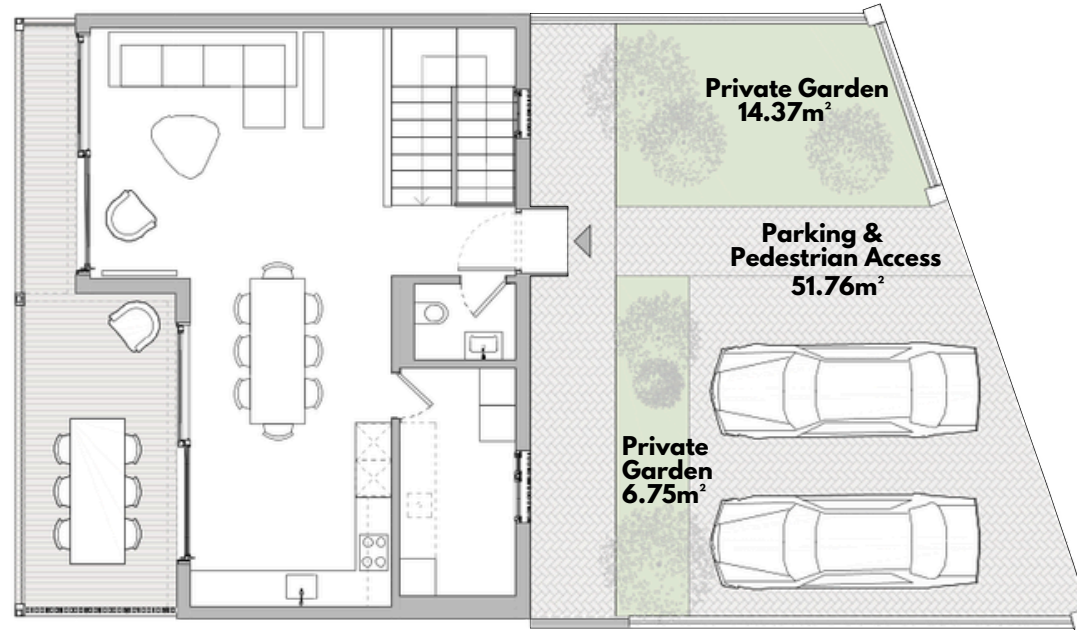
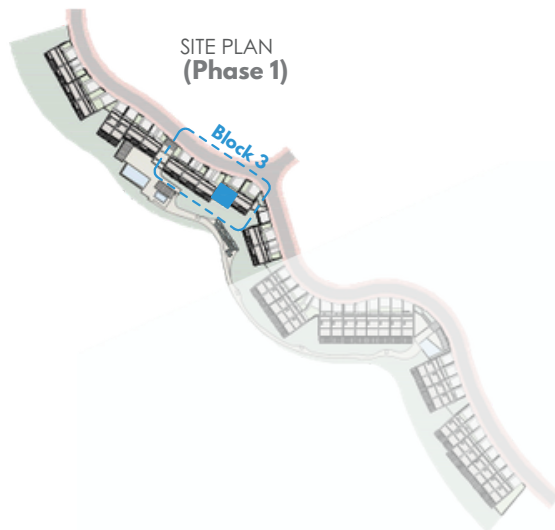
Scale Bar (metres)



# RESIDENCE 12

## BLOCK 3 TYPE 3

|                                 |                      |
|---------------------------------|----------------------|
| <b>BUILT AREA</b>               |                      |
| Living Area                     | 141,52m <sup>2</sup> |
| Terrace Area                    | 29,30m <sup>2</sup>  |
| Garden & Parking                | 74,91m <sup>2</sup>  |
| Total Built Area:               | 245,73m <sup>2</sup> |
| <b>ACCORDING TO D. 218/2005</b> |                      |
| Useful Area                     | 131,01m <sup>2</sup> |
| Built Area                      | 167,21m <sup>2</sup> |



HOUSE + ENTRANCE + PARKING  
(Entrance Level)

Scale Bar (metres)

