

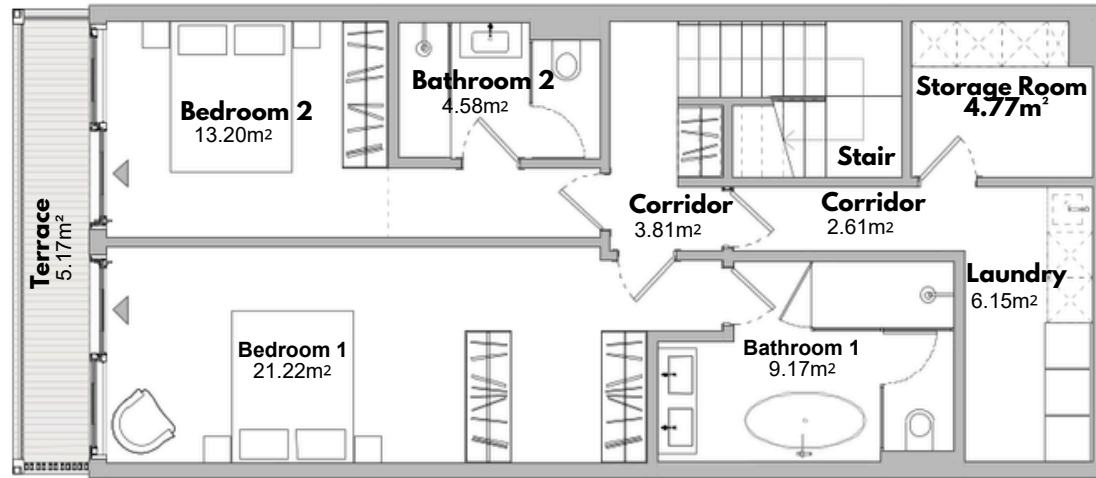
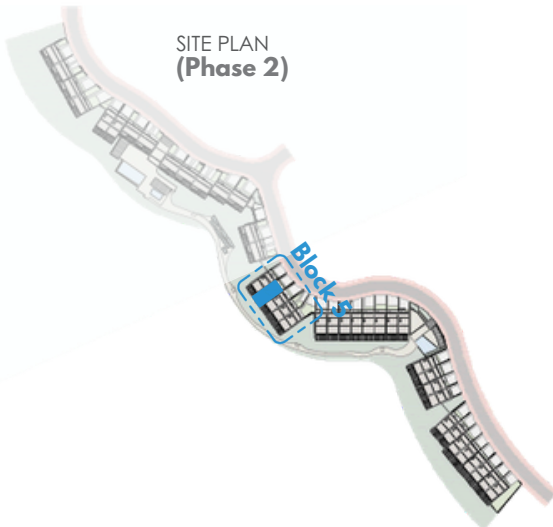
RESIDENCE 17

BLOCK 5 TYPE 1

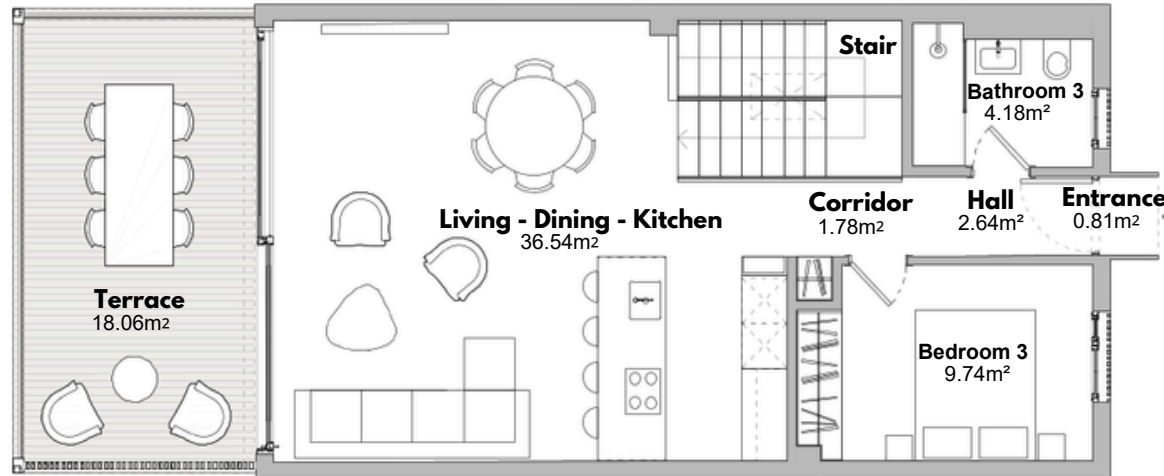
BUILT AREA	
Living Area	155,42m ²
Terrace Area	26,50m ²
Garden & Parking	46,59m ²
Total Built Area:	228,51m ²

ACCORDING TO D. 218/2005

Useful Area	145,02m ²
Built Area	180,80m ²



GROUND FLOOR PLAN (Lower Level)



FIRST FLOOR PLAN (Entrance Level)



Scale Bar (metres)



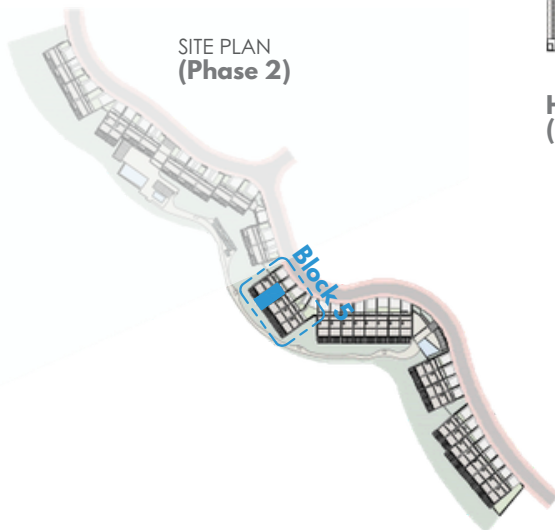
RESIDENCE 17

BLOCK 5 TYPE 1

BUILT AREA	
Living Area	155,42m ²
Terrace Area	26,50m ²
Garden & Parking	46,59m ²
Total Built Area:	228,51m ²
ACCORDING TO D. 218/2005	
Useful Area	145,02m ²
Built Area	180,80m ²



HOUSE + ENTRANCE + PARKING
(Entrance Level)



SITE PLAN
(Phase 2)

