

RESIDENCE 28

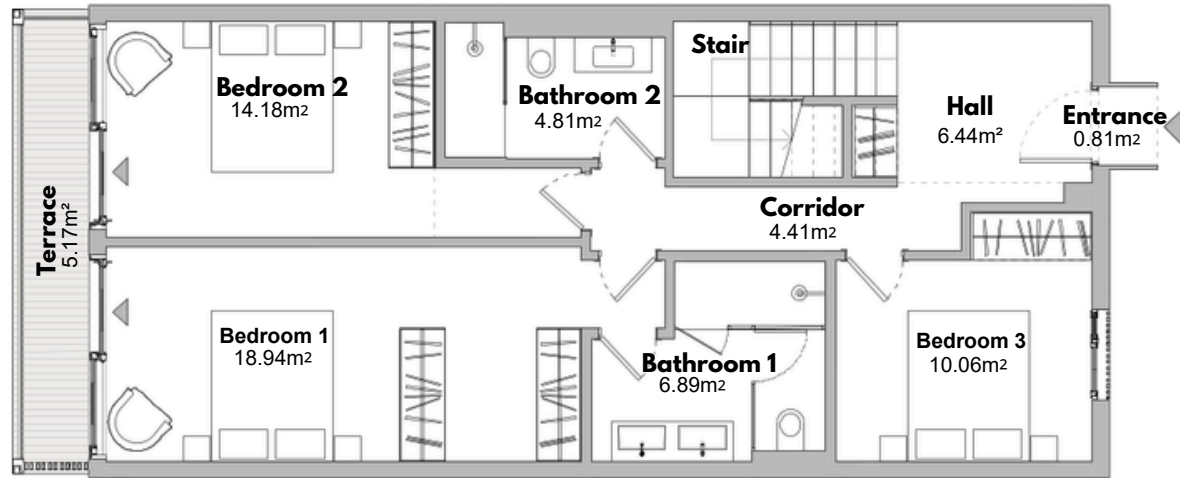
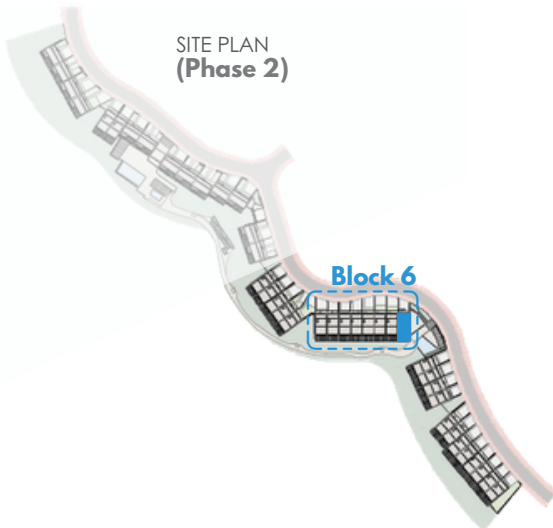
BLOCK 6 TYPE 2

BUILT AREA

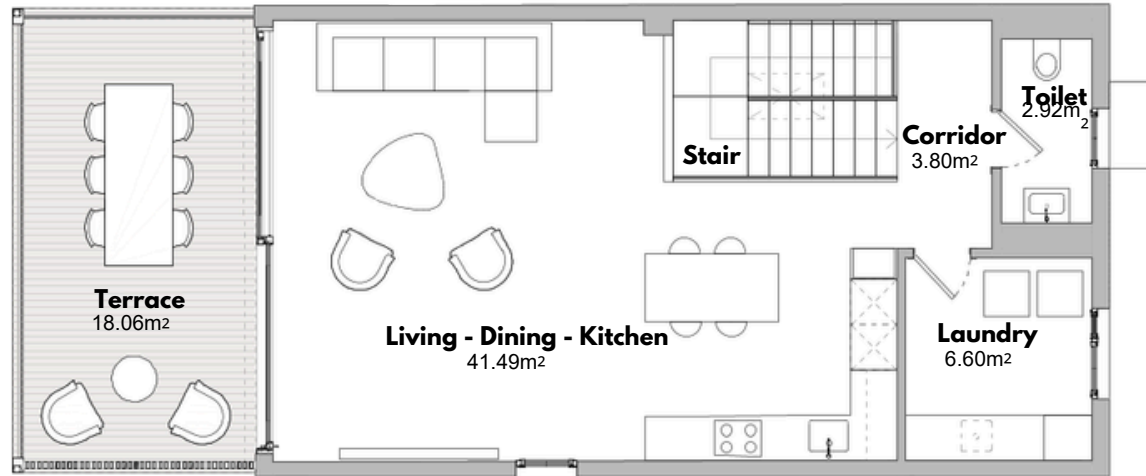
Living Area	155,42m ²
Terrace Area	26,50m ²
Garden & Parking	45,35m ²
Total Built Area:	227,27m ²

ACCORDING TO D. 218/2005

Useful Area	145,20m ²
Built Area	181,31m ²



GROUND FLOOR PLAN (Entrance Level)



FIRST FLOOR PLAN (Upper Level)



Scale Bar (metres)



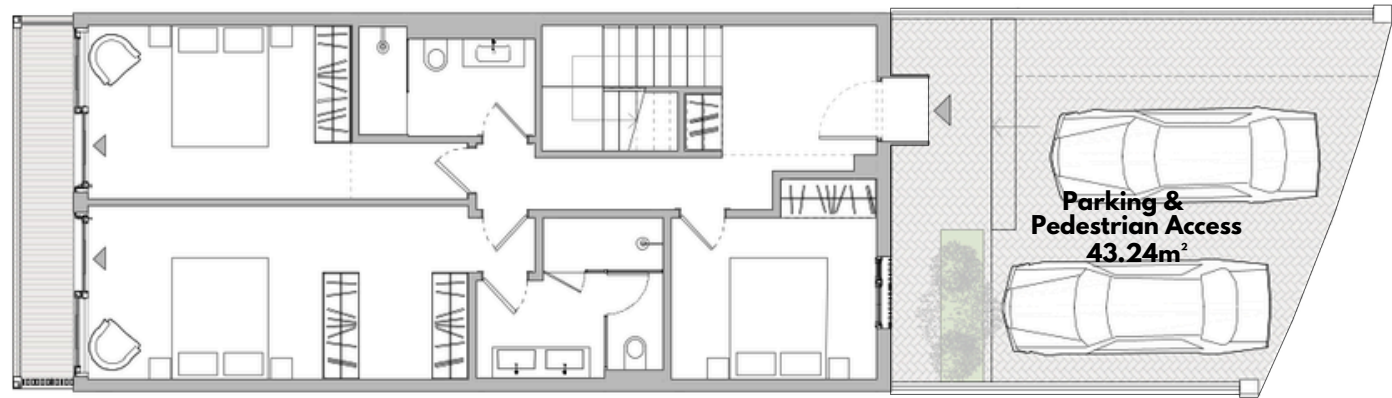
RESIDENCE 28

BLOCK 6 TYPE 2

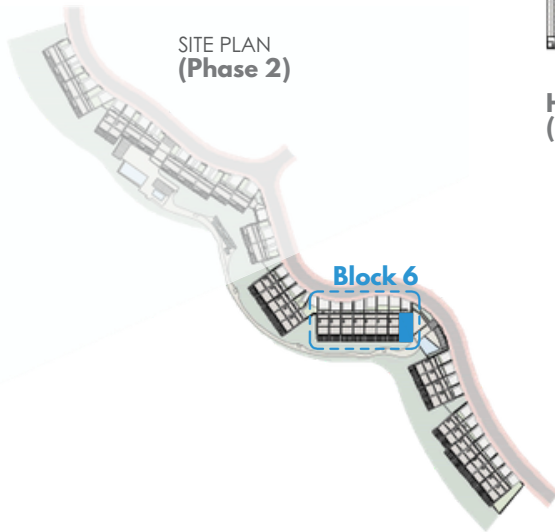
BUILT AREA	
Living Area	155,42m ²
Terrace Area	26,50m ²
Garden & Parking	45,35m ²
Total Built Area:	227,27m ²

ACCORDING TO D. 218/2005

Useful Area	145,20m ²
Built Area	181,31m ²



HOUSE + ENTRANCE + PARKING
(Entrance Level)



SITE PLAN
(Phase 2)



Scale Bar (metres)

